



WERLATONE

SINCE 1965

Werlatone, Inc.
2095 Route 22
PO Box 47
Brewster, NY 10509
845.279.6187
FAX.279.7404
www.werlatone.com

40 dB Dual Directional Coupler

Model C8155

Frequency: 10 - 500 MHz

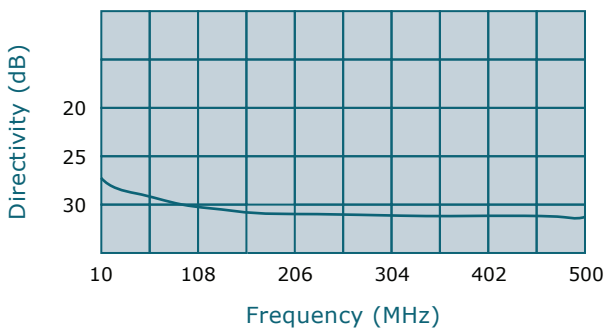
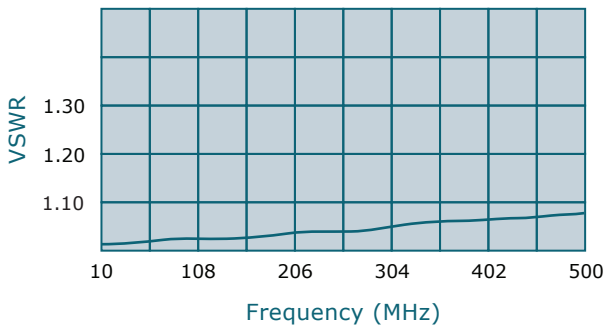
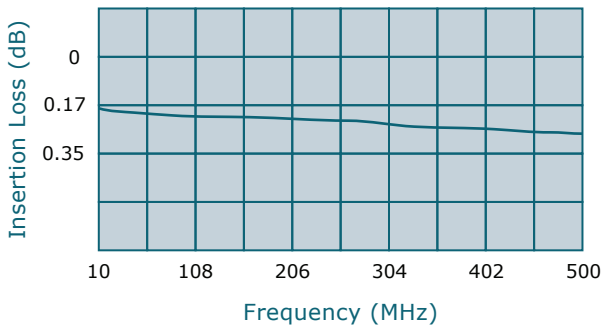
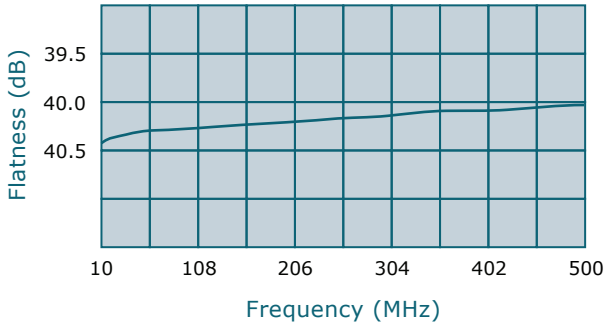
Power: 100 W CW

Insertion Loss: 0.35 dB Max.

VSWR: 1.20:1 Max.

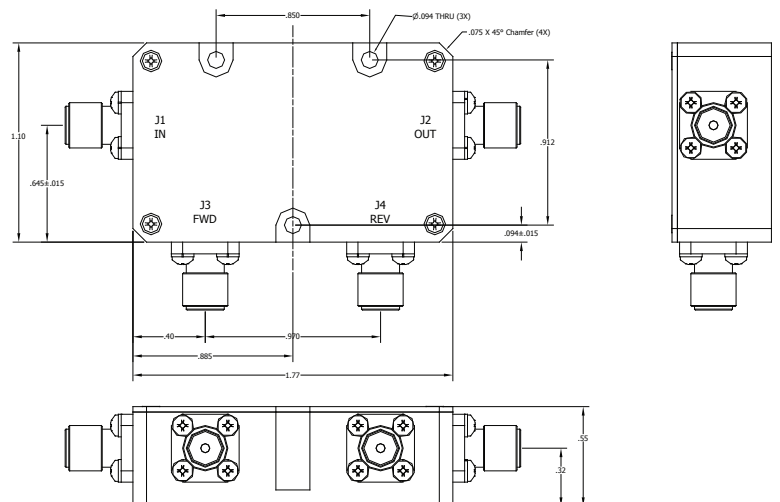
Flatness: +/- 0.5 dB Max.

Directivity: 20 dB Min.



- All specifications guaranteed.
- Test data provided with each unit shipped.
- Non-Connectorized version available.

| | Connectors | |
|-----------|------------|---------------|
| Model | Mainline | Coupled Ports |
| C8155-102 | SMA | SMA |



high power RF devices