

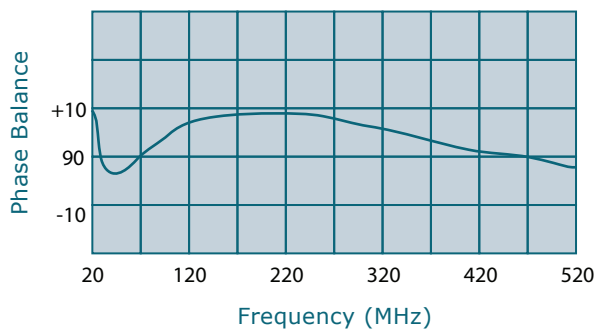
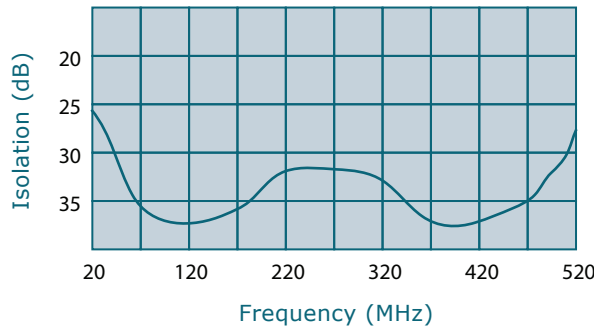
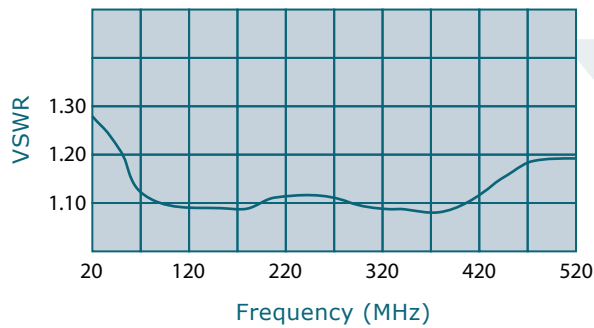
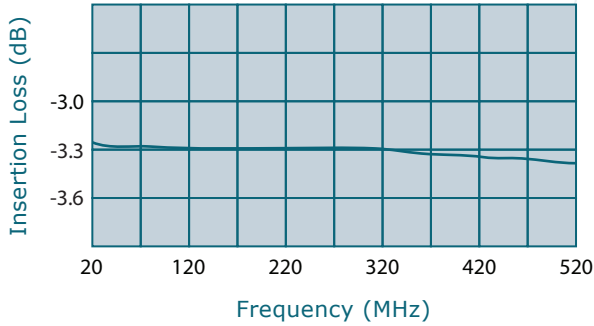


WERLATONE

SINCE 1965

Werlatone, Inc.
2095 Route 22
PO Box 47
Brewster, NY 10509
845.279.6187
FAX.279.7404
www.werlatone.com

2-Way (90 Deg.)Combiner/Divider Model QH8540-102



Frequency: 20-520 MHz

Power: 200 W CW

Insertion Loss: 0.6 dB Max.

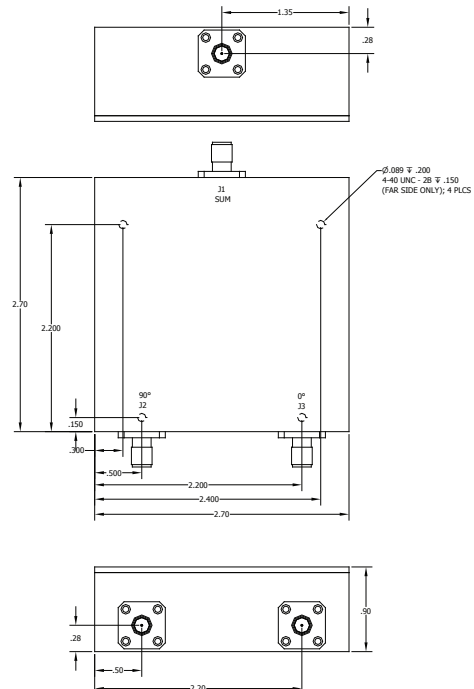
VSWR: 1.30:1 Max.

Isolation: 20 dB Min.

Phase Balance: 90 +/- 10 Deg. Max.

Amplitude Balance: 0.3 dB Max.

- All specifications guaranteed.
- Test data provided with each unit shipped.
- Internal termination will tolerate 30W unbalanced power.
- Available with SMA Connectors.
- Must be mounted on a heat spreader capable of maintaining a unit base plate temperature of 60 Deg C.



high power RF devices