



WERLATONE

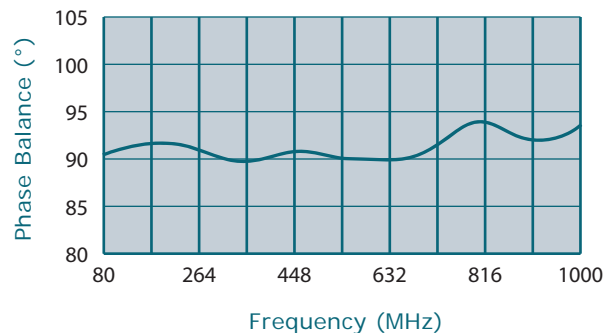
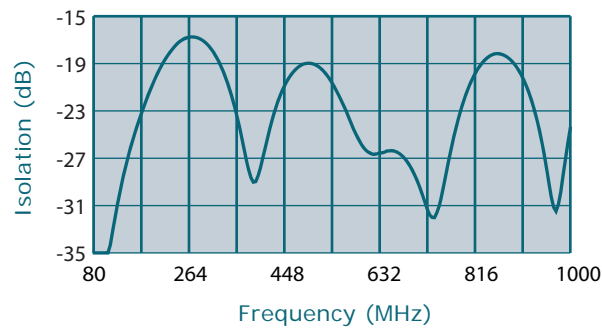
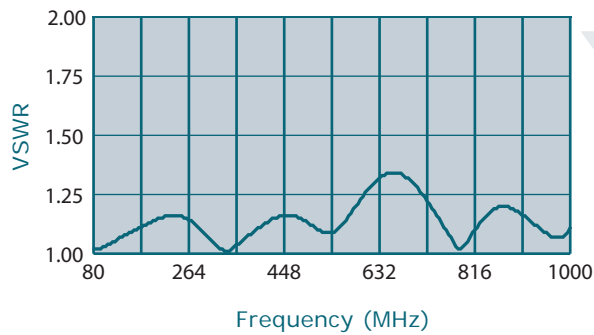
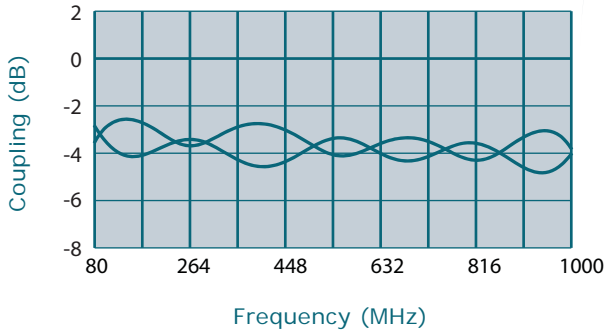
SINCE 1965

Werlatone, Inc.  
17 Jon Barrett Road  
Patterson, New York 12563  
T 845.278.2220  
F 845.278.3440  
www.werlatone.com



## (3 dB) 90° Hybrid Coupler

### Model QH8718



Frequency: 80 - 1000 MHz

Power: 100 W CW

Insertion Loss: 0.80 dB Max.

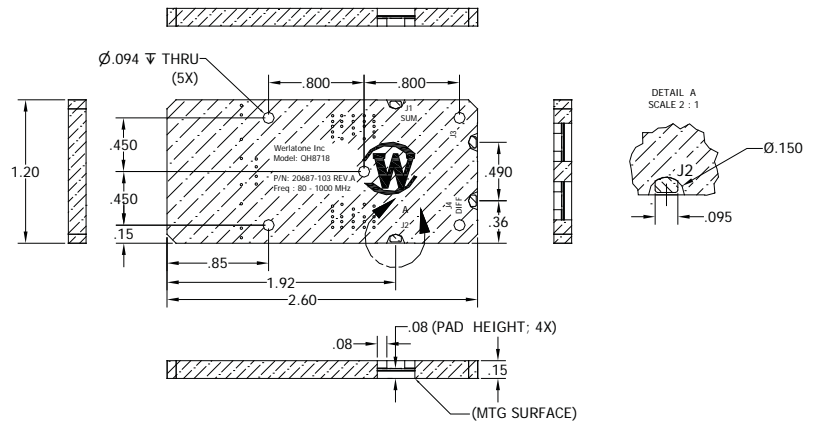
VSWR: 1.40:1 Max.

Isolation: 16 dB Min.

Phase Balance: 90 ± 5° Max.

Amplitude Balance: ± 1.0 dB Max.

- Operating Temperature: -55° to +85° C
- All specifications guaranteed
- Drop-In Style Unit
- Surface Finish Immersion Silver (Additional finish options upon request)
- Hatched Areas Denote Metallization



high power RF devices

\*\*Subject to change without notice