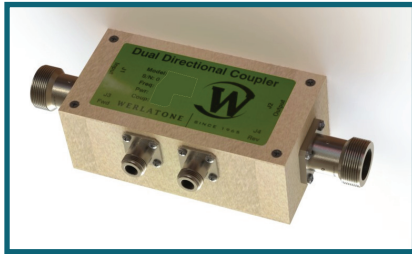




WERLATONE

SINCE 1965

Werlatone, Inc.  
17 Jon Barrett Road  
Patterson, New York 12563  
T 845.278.2220  
F 845.278.3440  
www.werlatone.com



## 60 dB Dual Directional Coupler

### Model C6154

Frequency: 2 - 50 MHz

Power: 8,000 W CW

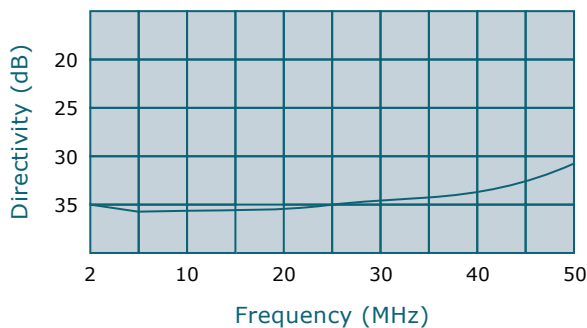
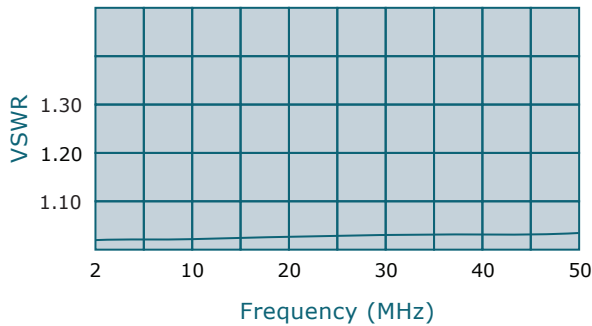
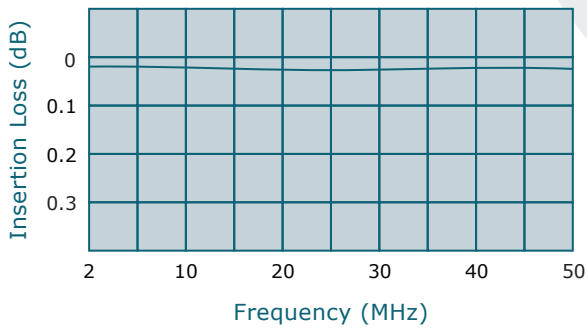
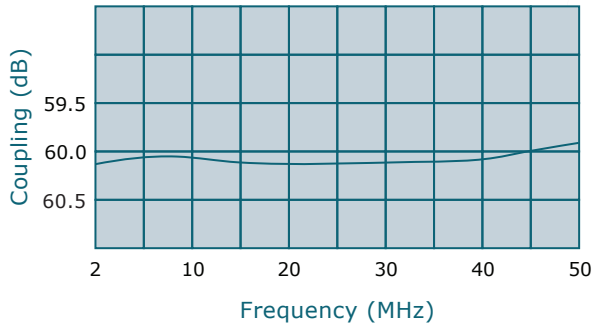
Coupling: 60 dB  $\pm$  1.0 dB Nom.

Insertion Loss: 0.1 dB Max.

VSWR: 1.10:1 Max.

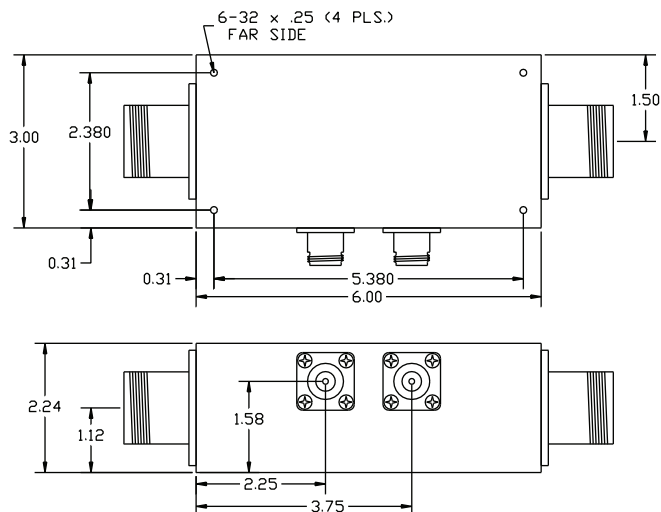
Flatness:  $\pm$ 0.5 dB Max.

Directivity: 30 dB Min.



- All specifications guaranteed.
- Test data provided with each unit shipped.
- Uni-Directional version available.
- Alternate connector configurations upon request.

Connector Configurations		
Model	J1,J2 (Mainline)	J3,J4 (Coupled Port)
C6154-30	LC Female	N Female
C6154-32	LC Female	SMA
C6154-33	LC Female	BNC
C6154-501	SQS Female	N Female



\*\*Subject to change without notice