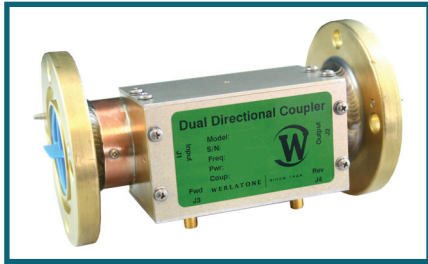




WERLATONE

SINCE 1965

Werlatone, Inc.
17 Jon Barrett Road
Patterson, New York 12563
T 845.278.2220
F 845.278.3440
www.werlatone.com



60 dB Dual Directional Coupler

Model C5342

Frequency: 470 - 860 MHz

Power: 5,000 W CW

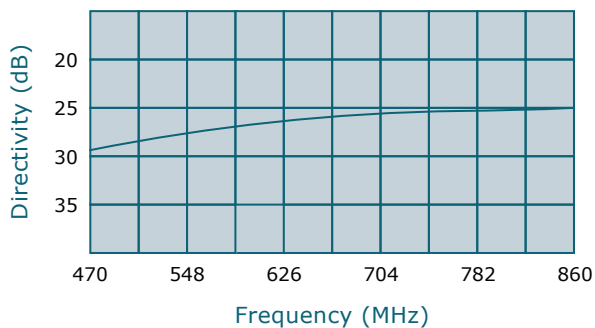
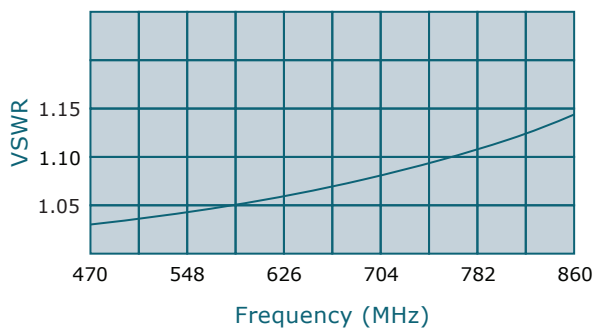
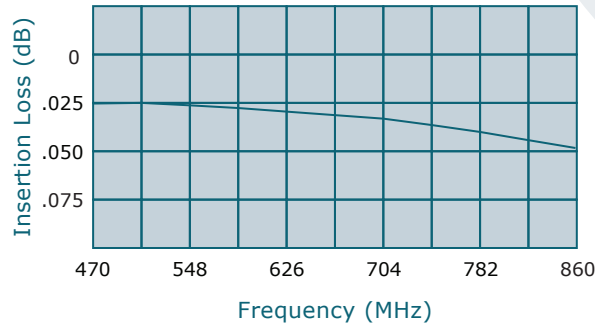
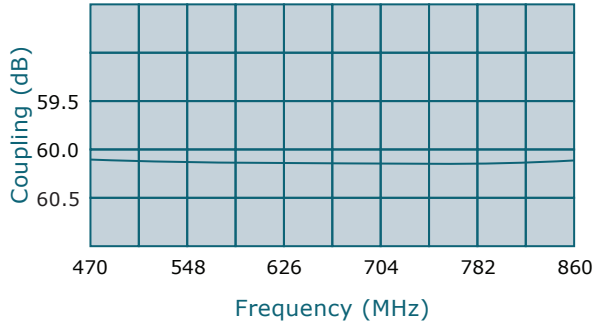
Coupling: 60 dB ± 1.0 dB Nom.

Insertion Loss: 0.10 dB Max.

VSWR: 1.15:1 Max.

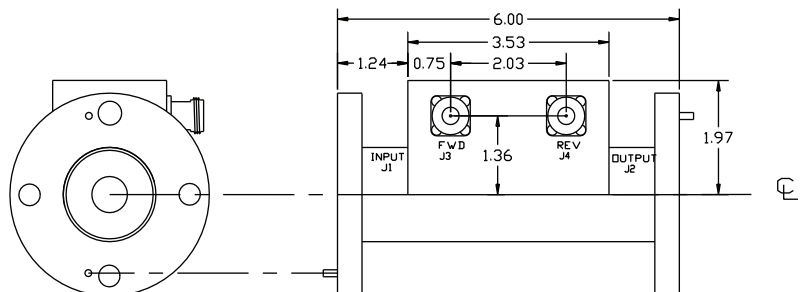
Flatness: +/-0.25 dB Max.

Directivity: 20 dB Min.



- All specifications guaranteed.
- Test data provided with each unit shipped.
- Uni-Directional version available.

Connector Configurations		
Model	J1,J2 (Mainline)	J3,J4 (Coupled Port)
C5342-81	1 5/8" EIA	N Female
C5342-83	1 5/8" EIA	SMA
C5342-84	1 5/8" EIA	BNC



**Subject to change without notice