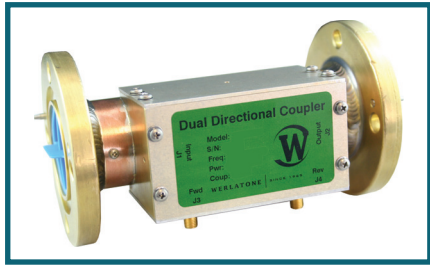




WERLATONE

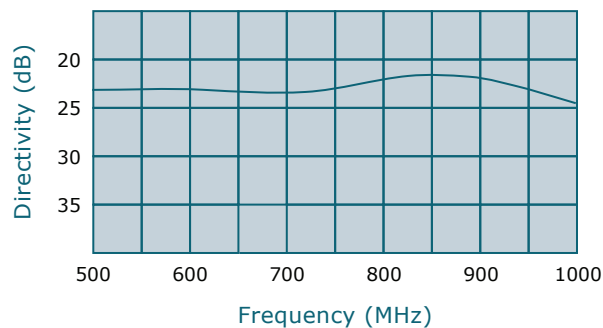
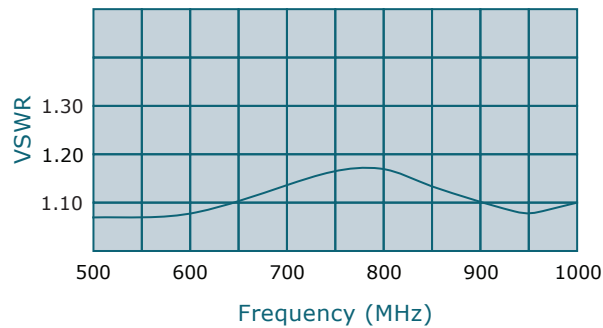
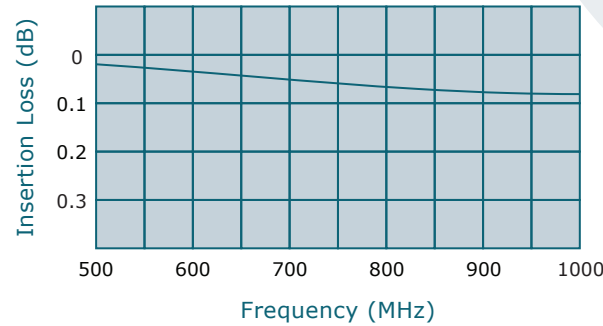
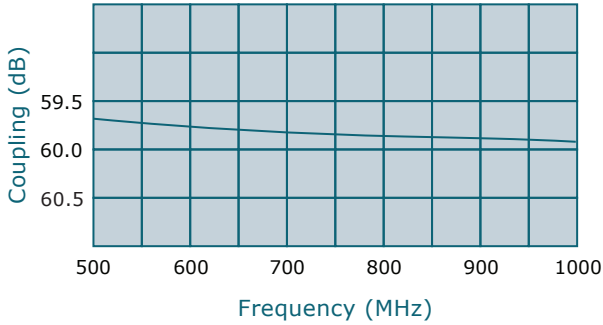
SINCE 1965

Werlatone, Inc.
17 Jon Barrett Road
Patterson, New York 12563
T 845.278.2220
F 845.278.3440
www.werlatone.com



60 dB Dual Directional Coupler

Model C5864



Frequency: 500 - 1000 MHz

Power: 3,000 W CW

Coupling: 60 dB ± 1.0 dB Nom.

Insertion Loss: 0.2 dB Max.

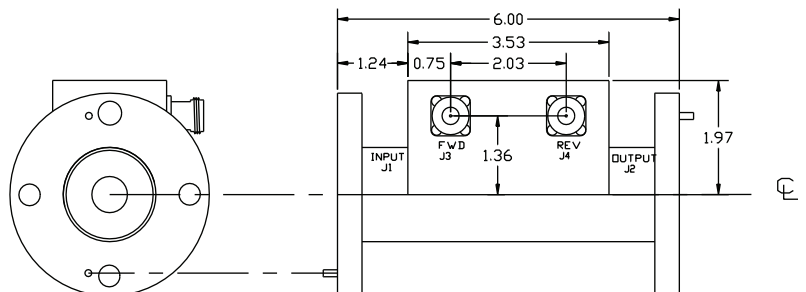
VSWR: 1.25:1 Max.

Flatness: +/-0.5 dB Max.

Directivity: 20 dB Min.

- All specifications guaranteed.
- Test data provided with each unit shipped.
- Uni-Directional version available.

Connector Configurations		
Model	J1,J2 (Mainline)	J3,J4 (Coupled Port)
C5864-81	1 5/8" EIA	N Female
C5864-83	1 5/8" EIA	SMA
C5864-84	1 5/8" EIA	BNC



**Subject to change without notice