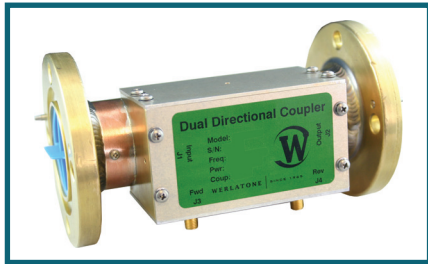




WERLATONE

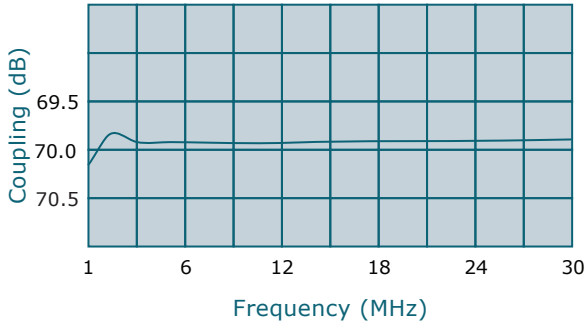
SINCE 1965

Werlatone, Inc.  
17 Jon Barrett Road  
Patterson, New York 12563  
T 845.278.2220  
F 845.278.3440  
www.werlatone.com



## 70 dB Dual Directional Coupler

### Model C2702



Frequency: 1 - 30 MHz

Power: 15,000 W CW

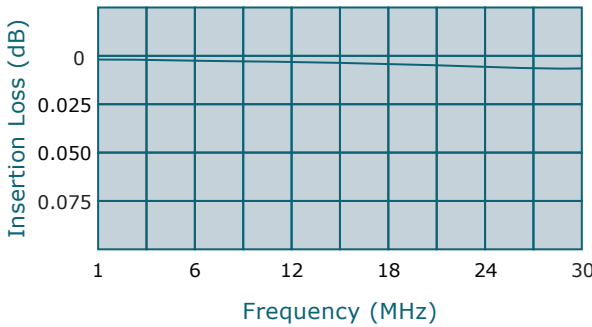
Coupling: 70 dB ± 1.0 dB Nom.

Insertion Loss: 0.05 dB Max.

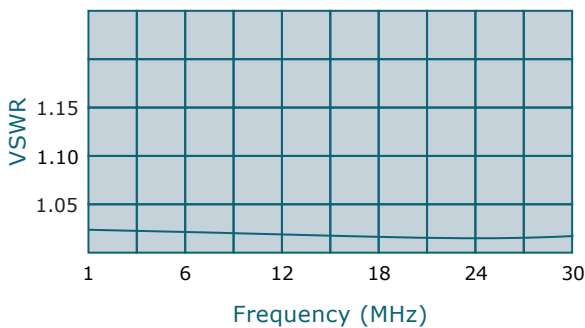
VSWR: 1.05:1 Max.

Flatness: +/-0.3 dB Max.

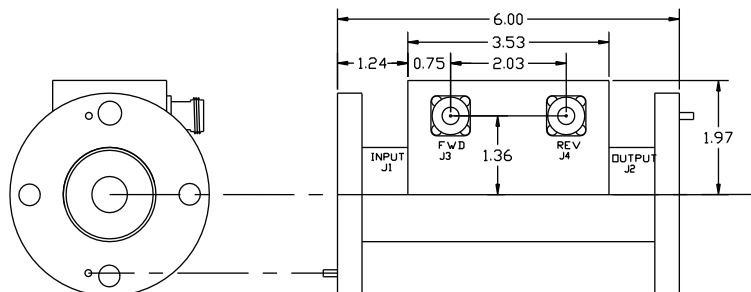
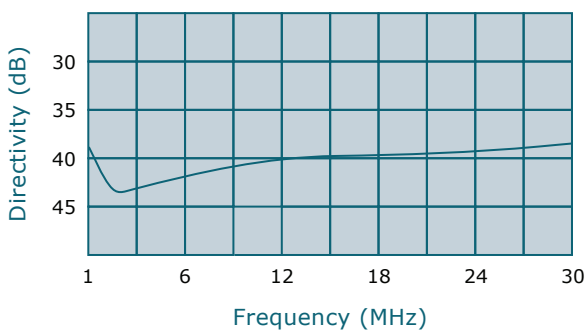
Directivity: 35 dB Min.



- All specifications guaranteed.
- Test data provided with each unit shipped.
- Uni-Directional version available.



| Connector Configurations |                  |                      |
|--------------------------|------------------|----------------------|
| Model                    | J1,J2 (Mainline) | J3,J4 (Coupled Port) |
| C2702-81                 | 1 5/8" EIA       | N Female             |
| C2702-83                 | 1 5/8" EIA       | SMA                  |
| C2702-84                 | 1 5/8" EIA       | BNC                  |



high power RF devices

\*\*Subject to change without notice