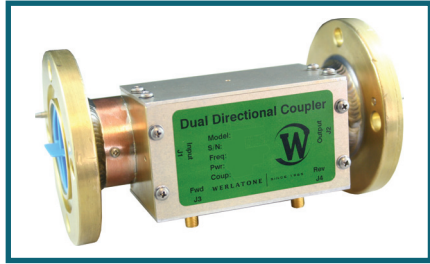




WERLATONE

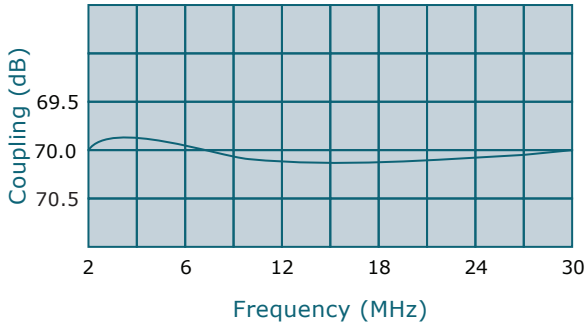
SINCE 1965

Werlatone, Inc.  
17 Jon Barrett Road  
Patterson, New York 12563  
T 845.278.2220  
F 845.278.3440  
www.werlatone.com



## 70 dB Dual Directional Coupler

### Model C2892



Frequency: 2 - 30 MHz

Power: 25,000 W CW

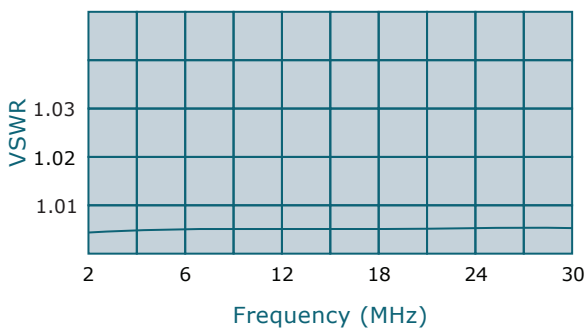
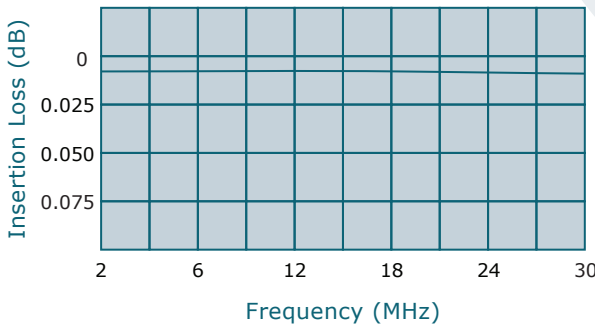
Coupling: 70 dB ± 1.0 dB Nom.

Insertion Loss: 0.05 dB Max.

VSWR: 1.10:1 Max.

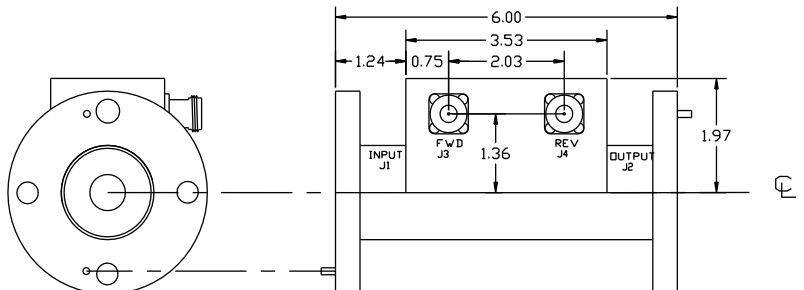
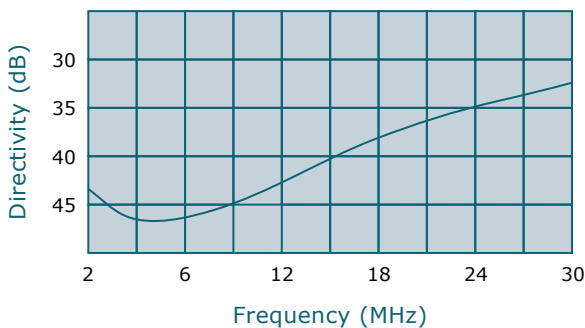
Flatness: +/-0.25 dB Max.

Directivity: 30 dB Min.



- All specifications guaranteed.
- Test data provided with each unit shipped.
- Uni-Directional version available.

Connector Configurations		
Model	J1,J2 (Mainline)	J3,J4 (Coupled Port)
C2892-81	1 5/8" EIA	N Female
C2892-83	1 5/8" EIA	SMA
C2892-84	1 5/8" EIA	BNC



\*\*Subject to change without notice