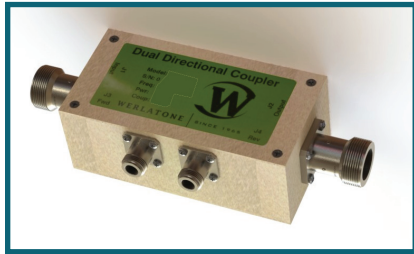




WERLATONE

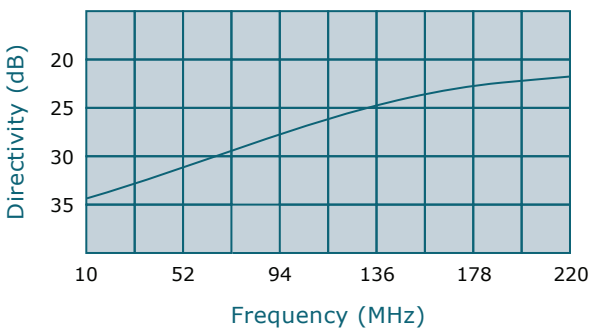
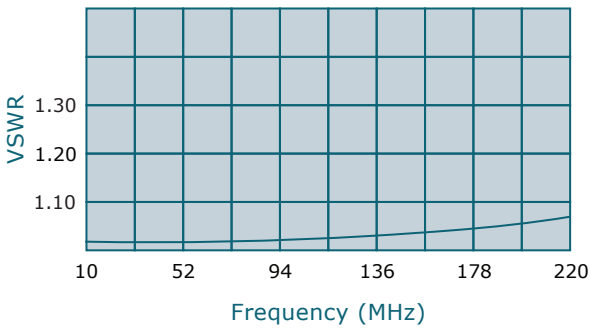
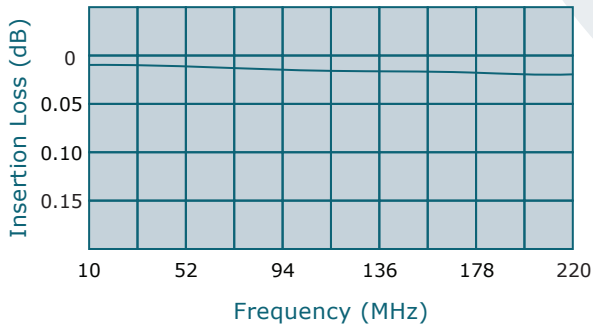
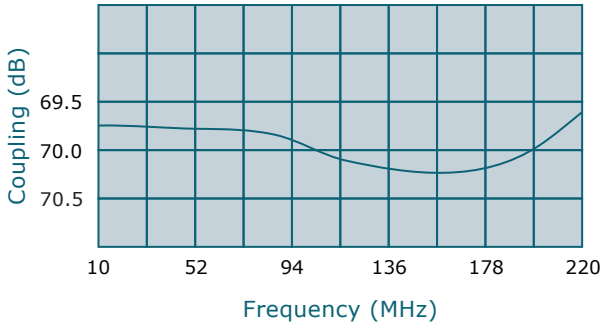
SINCE 1965

Werlatone, Inc.
17 Jon Barrett Road
Patterson, New York 12563
T 845.278.2220
F 845.278.3440
www.werlatone.com



70 dB Dual Directional Coupler

Model C2872



Frequency: 10 - 220 MHz

Power: 10,000 W CW

Coupling: 70 dB ± 1.0 dB Nom.

Insertion Loss: 0.1 dB Max.

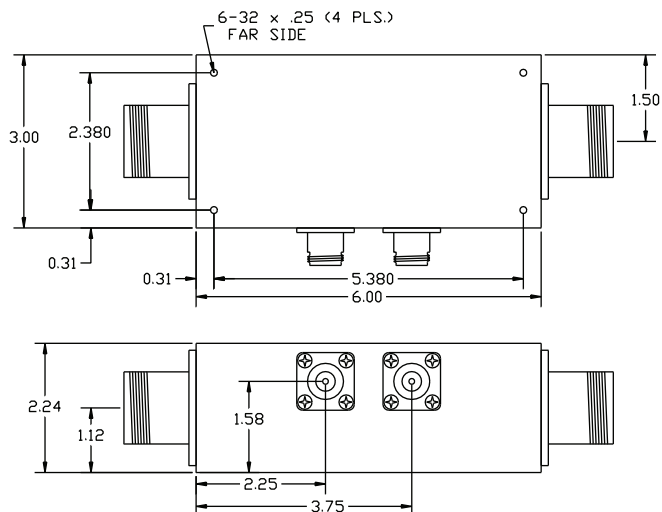
VSWR: 1.15:1 Max.

Flatness: +/-0.5 dB Max.

Directivity: 20 dB Min.

- All specifications guaranteed.
- Test data provided with each unit shipped.
- Uni-Directional version available.
- Alternate connector configurations upon request.

Connector Configurations		
Model	J1,J2 (Mainline)	J3,J4 (Coupled Port)
C2872-30	LC Female	N Female
C2872-32	LC Female	SMA
C2872-33	LC Female	BNC
C2872-501	SQS Female	N Female



**Subject to change without notice