



WERLATONE

SINCE 1965

Werlatone, Inc.
17 Jon Barrett Road
Patterson, New York 12563
T 845.278.2220
F 845.278.3440
www.werlatone.com

2-Way Combiner/Divider

Model D5687

Frequency: 10 - 500 MHz

Power: 200 W CW

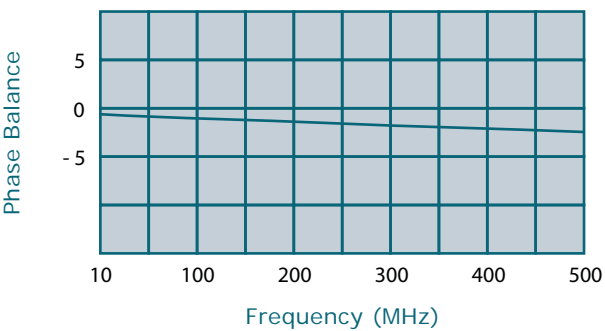
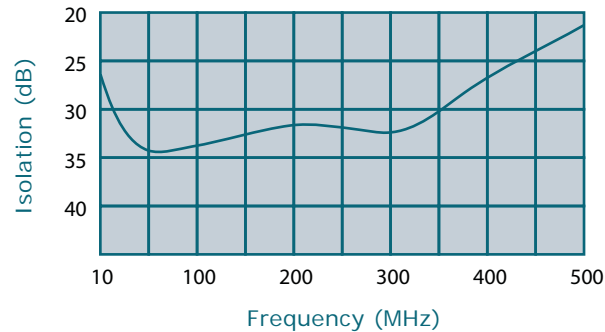
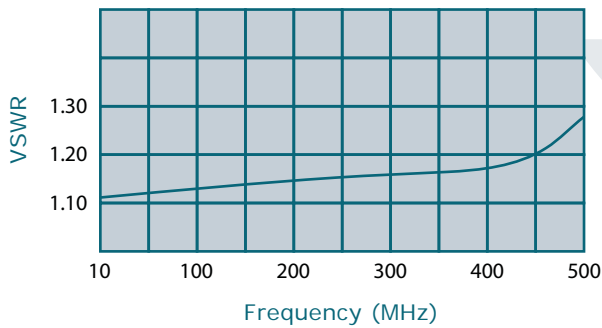
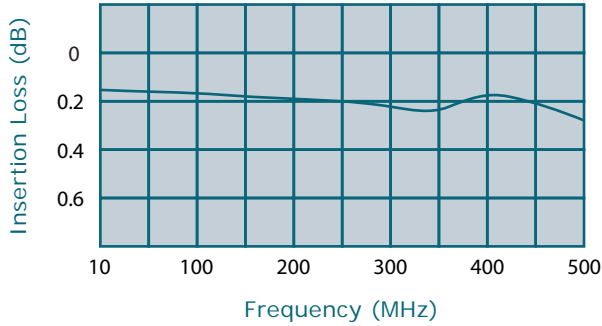
Insertion Loss: 0.5 dB Max.

VSWR: 1.40:1 Max.

Isolation: 20 dB Min.

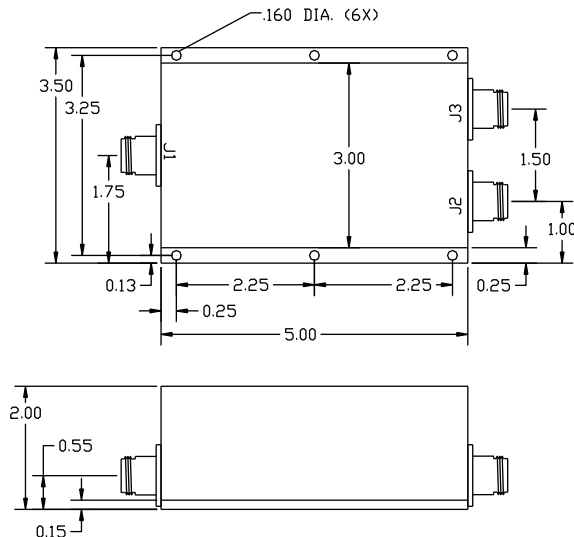
Phase Balance: 5 Deg. Max.

Amplitude Balance: 0.2 dB Max.



- All specifications guaranteed.
- Test data provided with each unit shipped.
- Alternate connector configurations upon request.

Connector Configuration		
Model	J1 (Sum Port)	J2-J3 (Input/Output)
D5687-10	N Female	N Female
D5687-12	N Female	SMA
D5687-13	N Female	BNC
D5687-102	SMA	SMA



high power RF devices

**Subject to change without notice