



WERLATONE

SINCE 1965

Werlatone, Inc.  
17 Jon Barrett Road  
Patterson, New York 12563  
T 845.278.2220  
F 845.278.3440  
www.werlatone.com

## 2-Way Combiner/Divider

### Model D3030

Frequency: 200 - 400 MHz

Power: 500 W CW

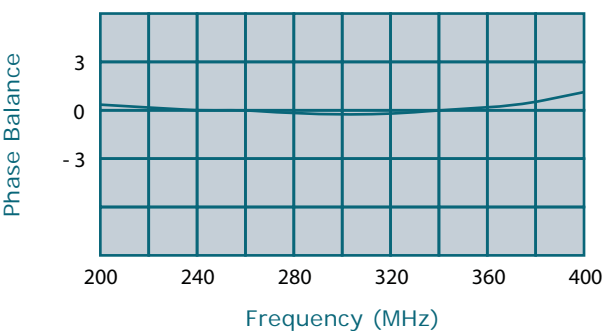
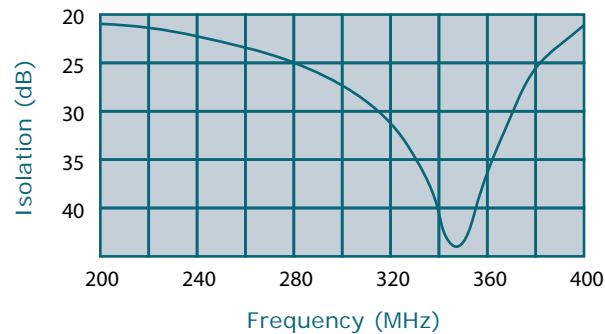
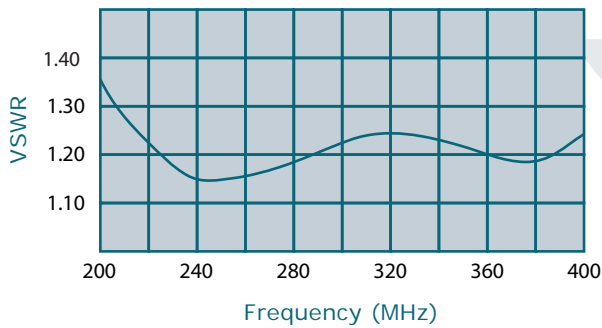
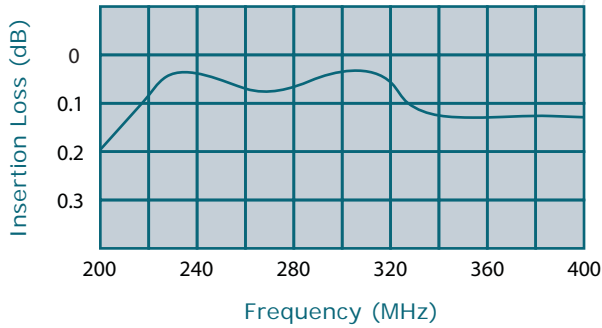
Insertion Loss: 0.25 dB Max.

VSWR: 1.40:1 Max.

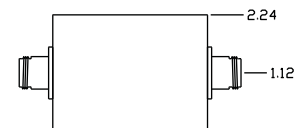
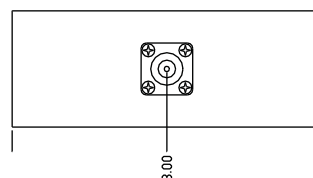
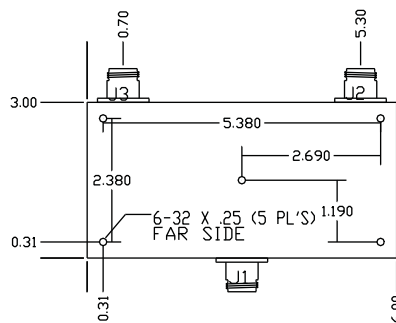
Isolation: 20 dB Min.

Phase Balance: 3 Deg. Max.

Amplitude Balance: 0.15 dB Max.



Connector Configuration		
Model	J1 (Sum Port)	J2-J3 (Input/Output)
D3030-10	N Female	N Female
D3030-12	N Female	SMA
D3030-13	N Female	BNC
D3030-102	SMA	SMA



\*\*Subject to change without notice

high power RF devices