



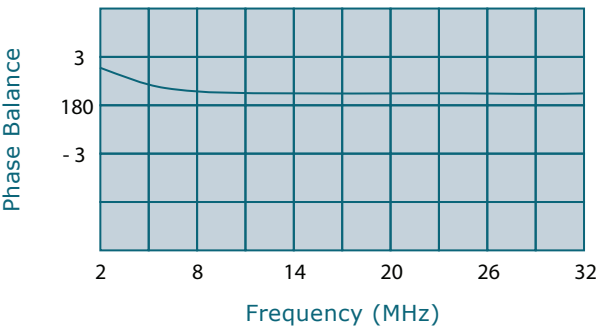
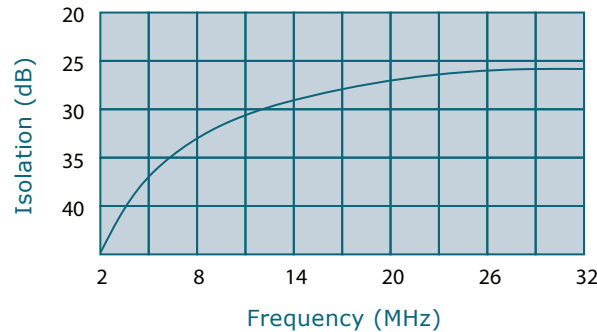
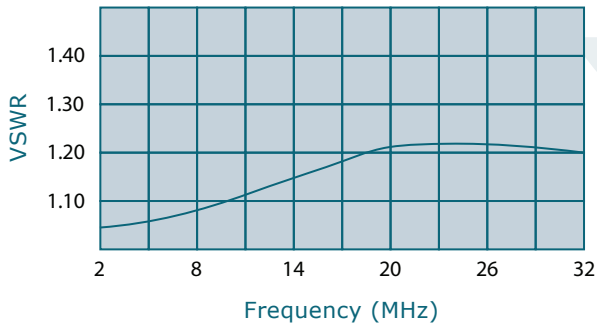
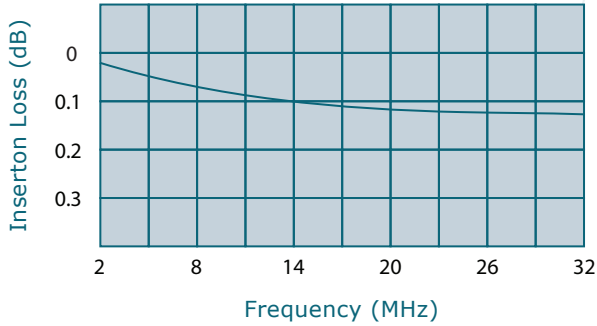
WERLATONE

SINCE 1965

Werlatone, Inc.
17 Jon Barrett Road
Patterson, New York 12563
T 845.278.2220
F 845.278.3440
www.werlatone.com

2-Way 180° Combiner/Divider

Model H1484



Frequency: 2 - 32 MHz

Power: 500 W CW

Insertion Loss: 0.2 dB Max.

VSWR: 1.30:1 Max.

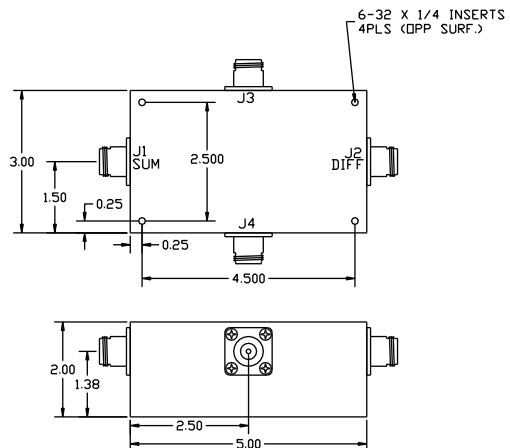
Isolation: 25 dB Min.

Phase Balance: 180° ± 3° Max.

Amplitude Balance: 0.1 dB Max.

- All specifications guaranteed.
- Test data provided with each unit shipped.
- Alternate connector configurations upon request.

Connector Configurations			
Model	J1 (Sumport)	J3,J4 (Inputs/Outputs)	J2 (Diff. Port)
H1484-10	N Female	N Female	N Female
H1484-12	N Female	SMA	SMA
H1484-13	N Female	BNC	BNC
H1484-102	SMA	SMA	SMA



**Subject to change without notice

high power RF devices