



WERLATONE

SINCE 1965

Werlatone, Inc.  
17 Jon Barrett Road  
Patterson, New York 12563  
T 845.278.2220  
F 845.278.3440  
www.werlatone.com

## 2-Way 180° Combiner/Divider

### Model H2977

Frequency: 20 - 150 MHz

Power: 200 W CW

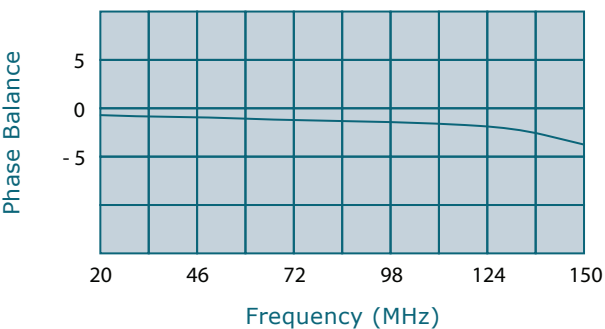
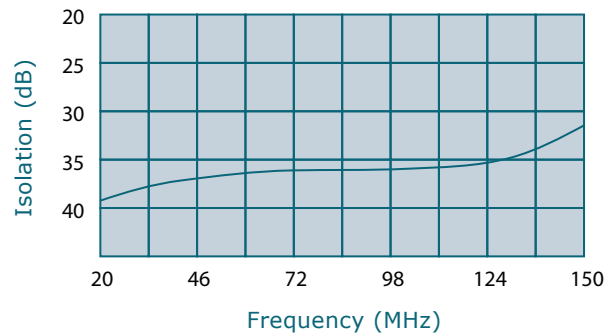
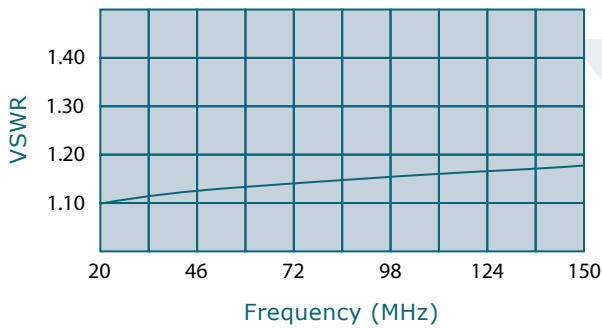
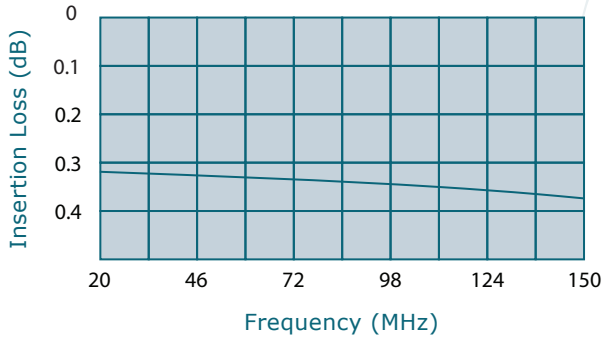
Insertion Loss: 0.5 dB Max.

VSWR: 1.30:1 Max.

Isolation: 20 dB Min.

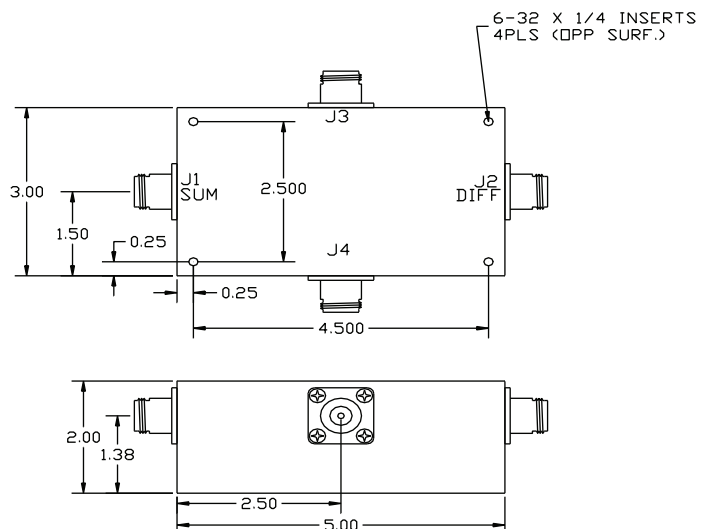
Phase Balance: 180° ± 5° Max.

Amplitude Balance: 0.2 dB Max.



- All specifications guaranteed.
- Test data provided with each unit shipped.
- Alternate connector configurations upon request.

Connector Configurations			
Model	J1 (Sumport)	J3,J4 (Inputs/Outputs)	J2 (Diff. Port)
H2977-10	N Female	N Female	N Female
H2977-12	N Female	SMA	SMA
H2977-13	N Female	BNC	BNC
H2977-102	SMA	SMA	SMA



high power RF devices

\*\*Subject to change without notice