



WERLATONE

SINCE 1965

Werlatone, Inc.
17 Jon Barrett Road
Patterson, New York 12563
T 845.278.2220
F 845.278.3440
www.werlatone.com

3-Way(Even) Divider

Model D5876

Frequency: 150 - 1000 MHz

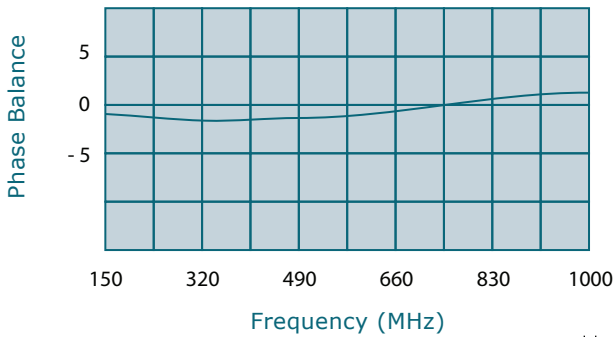
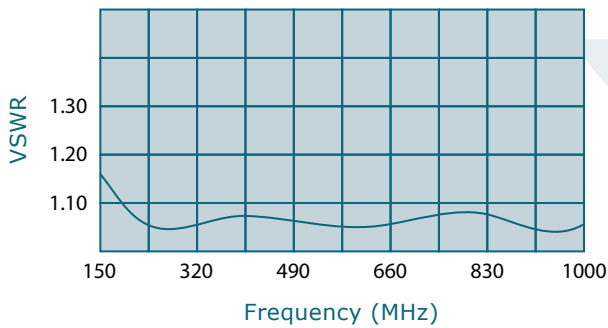
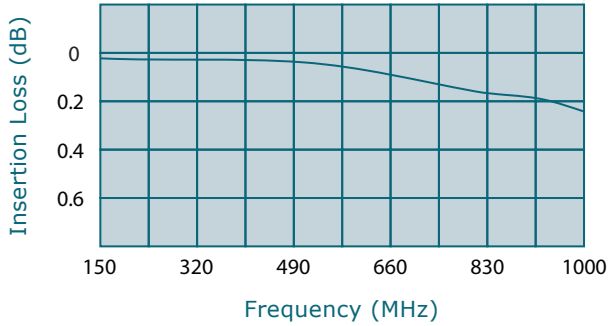
Power: 350 W CW

Insertion Loss: 0.65 dB Max.

VSWR: 1.30:1 Max.

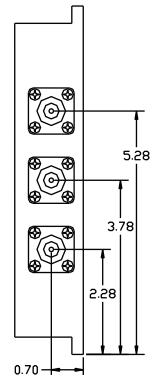
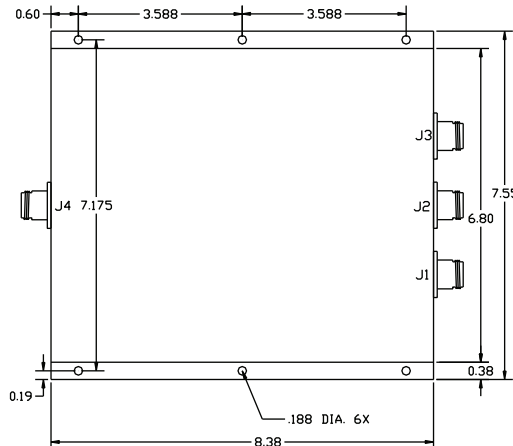
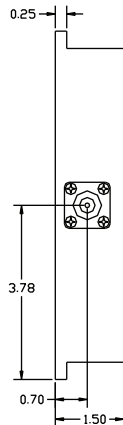
Phase Balance: 3 Deg. Max.

Amplitude Balance: 0.25 dB Max.



- Designed for Distributed Communications Systems.
- All specifications guaranteed.
- Test data provided with each unit shipped.
- Alternate connector configurations upon request.

Connector Configurations		
Model	J1 (Sumport)	J2,J3 (Inputs/Outputs)
D5876-10	N Female	N Female
D5876-14	N Male	N Female
D5876-28	7/16 Female	7/16 Female



high power RF devices