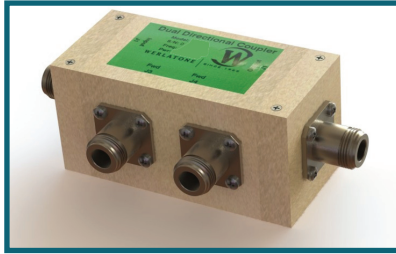




WERLATONE

SINCE 1965

Werlatone, Inc.  
17 Jon Barrett Road  
Patterson, New York 12563  
T 845.278.2220  
F 845.278.3440  
www.werlatone.com



## 30 dB Dual Directional Coupler

### Model C6416

Frequency: 0.5-32 MHz

Power: 50 W CW

Coupling: 30 dB ± 1.0 dB Nom.

Insertion Loss: 0.15 dB Max.

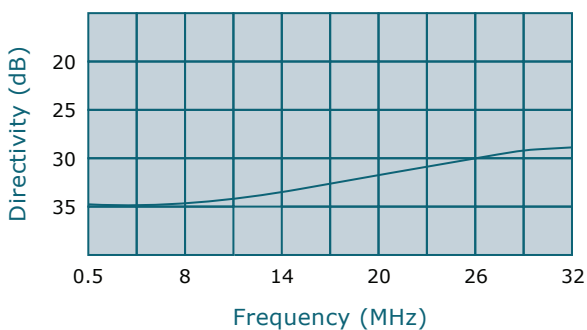
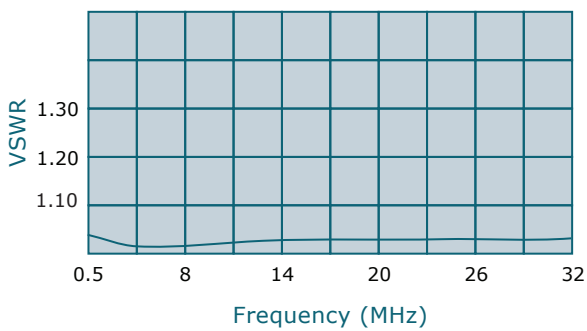
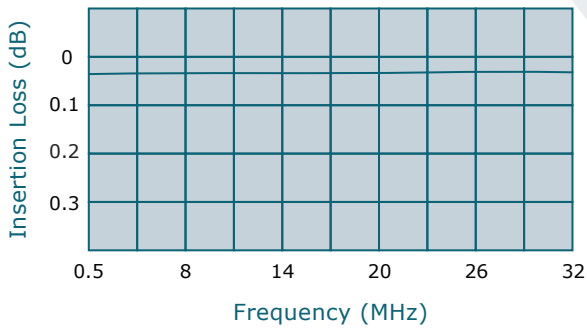
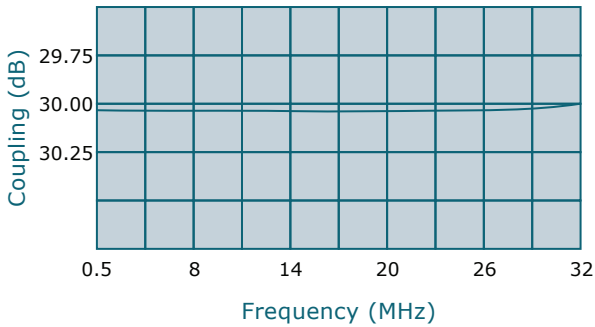
VSWR: 1.15:1 Max.

Flatness: +/- 0.25 dB Max.

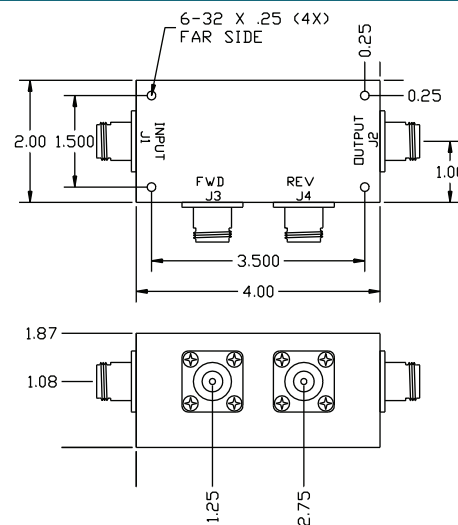
Directivity: 25 dB Min.

*\*Mismatch Tolerant®* Design

- All specifications guaranteed.
- Test data provided with each unit shipped.
- Uni-Directional version available.
- \* Designed to operate, at rated power, into an infinite VSWR.



Connector Configurations		
Model	J1,J2 (Mainline)	J3,J4 (Coupled Port)
C6416-10	N Female	N Female
C6416-12	N Female	SMA
C6416-13	N Female	BNC
C6416-102	SMA	SMA



\*\*Subject to change without notice