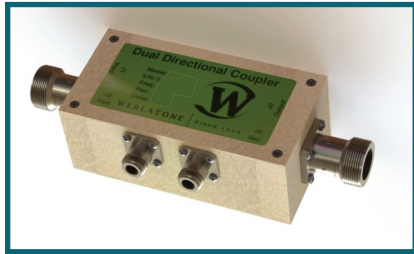




WERLATONE

SINCE 1965

Werlatone, Inc.
17 Jon Barrett Road
Patterson, New York 12563
T 845.278.2220
F 845.278.3440
www.werlatone.com



60 dB Dual Directional Coupler

Model C3939

Frequency: 2 - 50 MHz

Power: 4,000 W CW

Coupling: 60 dB \pm 1.0 dB Nom.

Insertion Loss: 0.1 dB Max.

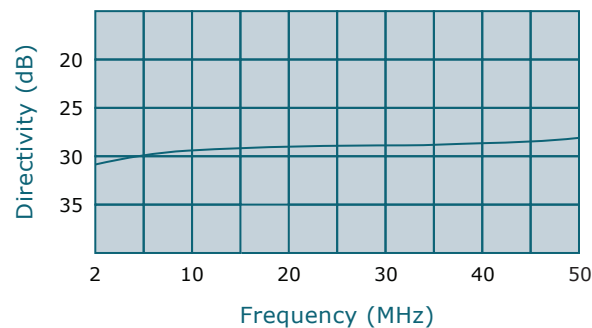
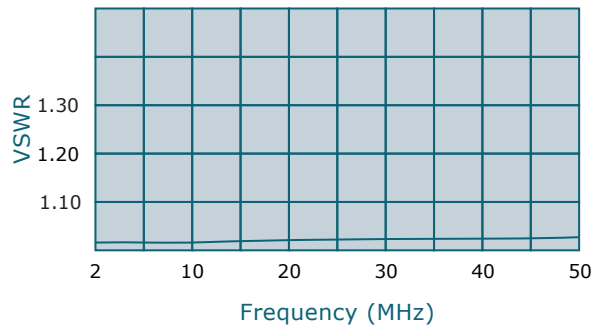
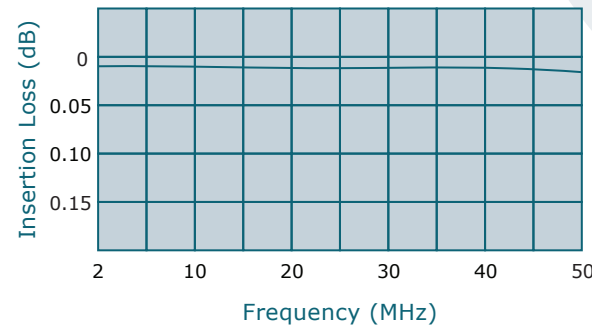
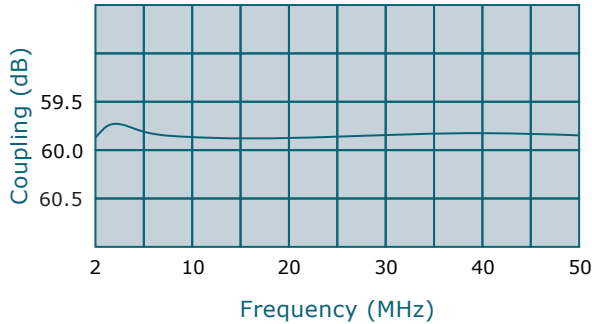
VSWR: 1.10:1 Max.

Flatness: \pm 0.5 dB Max.

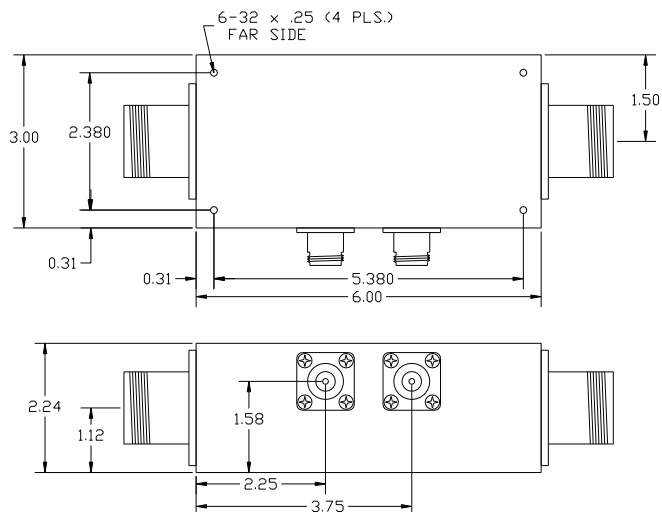
Directivity: 20 dB Min.

- All specifications guaranteed.
- Test data provided with each unit shipped.
- Uni-Directional version available.
- Alternate connector configurations upon request.

Connector Configurations		
Model	J1,J2 (Mainline)	J3,J4 (Coupled Port)
C3939-30	LC Female	N Female
C3939-32	LC Female	SMA
C3939-33	LC Female	BNC
C3939-501	SQS Female	N Female



**Subject to change without notice



high power RF devices