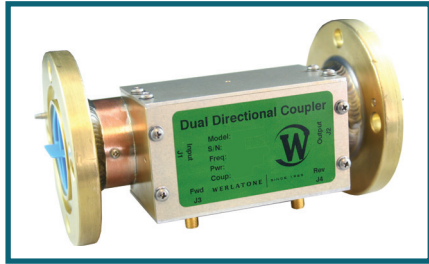




WERLATONE

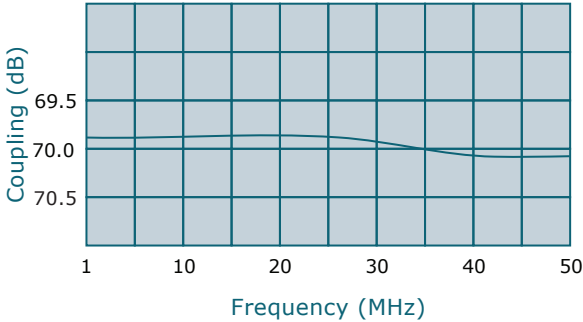
SINCE 1965

Werlatone, Inc.  
17 Jon Barrett Road  
Patterson, New York 12563  
T 845.278.2220  
F 845.278.3440  
www.werlatone.com



# 70 dB Dual Directional Coupler

## Model C6318



Frequency: 1 - 50 MHz

Power: 10,000 W CW

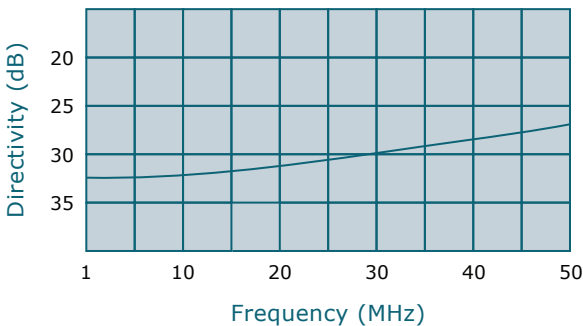
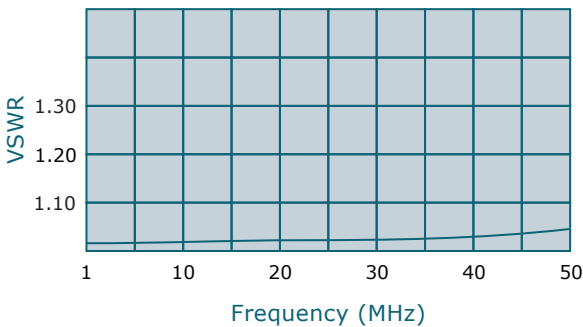
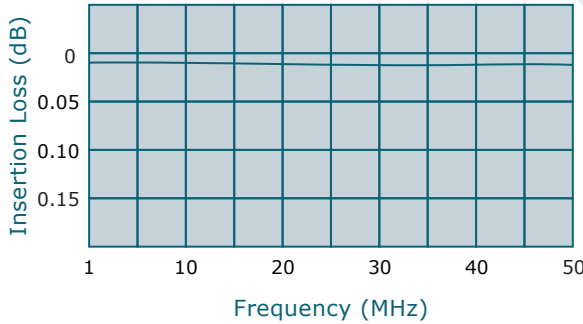
Coupling: 70 dB ± 1.0 dB Nom.

Insertion Loss: 0.05 dB Max.

VSWR: 1.10:1 Max.

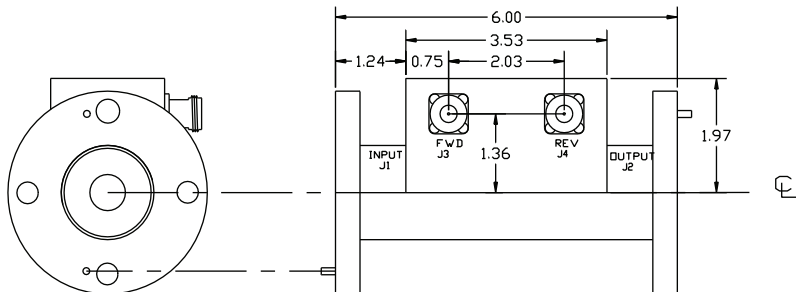
Flatness: +/-0.5 dB Max.

Directivity: 30 dB Min.



- All specifications guaranteed.
- Test data provided with each unit shipped.
- Uni-Directional version available.

Connector Configurations		
Model	J1,J2 (Mainline)	J3,J4 (Coupled Port)
C6318-81	1 5/8" EIA	N Female
C6318-83	1 5/8" EIA	SMA
C6318-84	1 5/8" EIA	BNC



\*\*Subject to change without notice