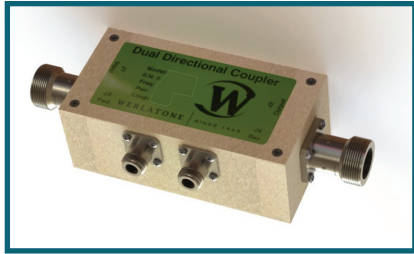




WERLATONE

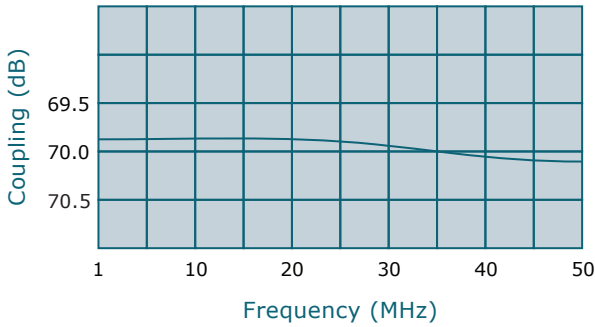
SINCE 1965

Werlatone, Inc.  
17 Jon Barrett Road  
Patterson, New York 12563  
T 845.278.2220  
F 845.278.3440  
www.werlatone.com



## 70 dB Dual Directional Coupler

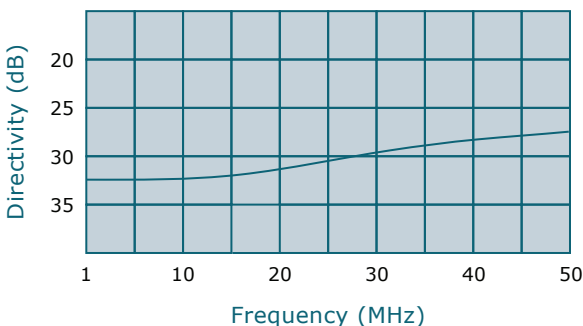
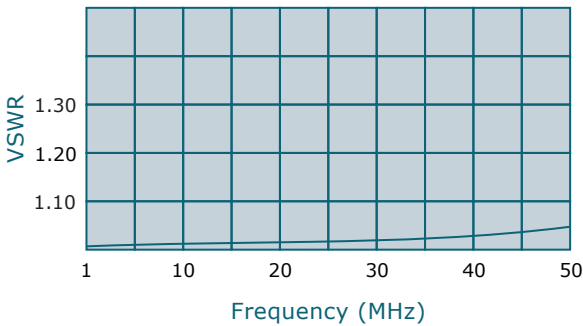
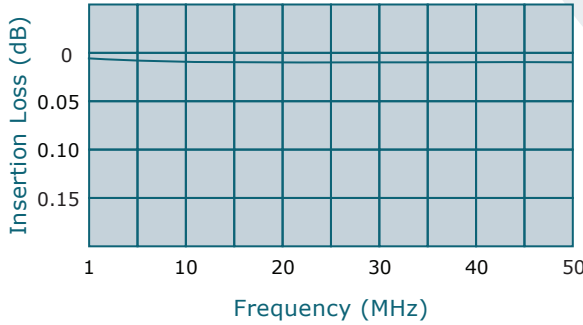
### Model C6413



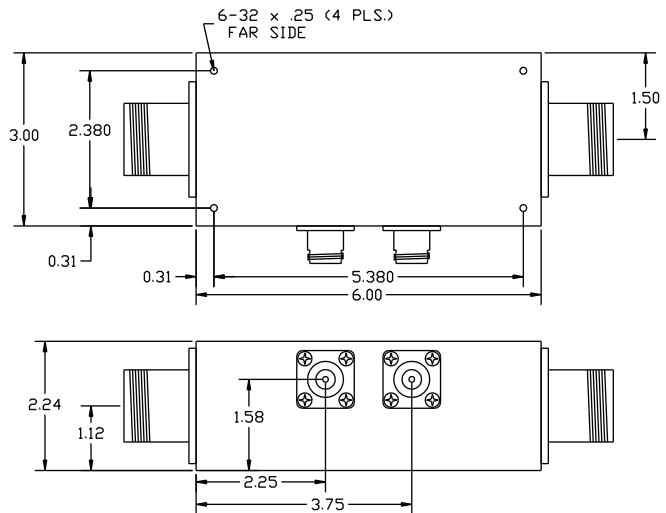
- Frequency: 1 - 50 MHz
- Power: 20,000 W CW
- Coupling: 70 dB  $\pm$  1.0 dB Nom.
- Insertion Loss: 0.05 dB Max.
- VSWR: 1.10:1 Max.
- Flatness:  $\pm$ 0.5 dB Max.
- Directivity: 25 dB Min.

- All specifications guaranteed.
- Test data provided with each unit shipped.
- Uni-Directional version available.
- Alternate connector configurations upon request.

Connector Configurations		
Model	J1,J2 (Mainline)	J3,J4 (Coupled Port)
C6413-30	LC Female	N Female
C6413-32	LC Female	SMA
C6413-33	LC Female	BNC
C6413-501	SQS Female	N Female



\*\*Subject to change without notice



high power RF devices