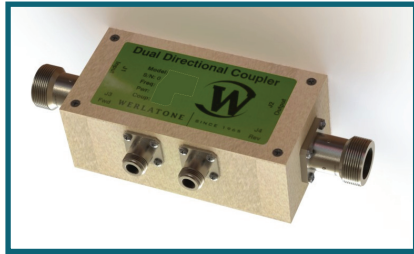




WERLATONE

SINCE 1965

Werlatone, Inc.  
17 Jon Barrett Road  
Patterson, New York 12563  
T 845.278.2220  
F 845.278.3440  
www.werlatone.com



## 70 dB Dual Directional Coupler

### Model C5845

Frequency: 1 - 10 MHz

Power: 20,000 W CW

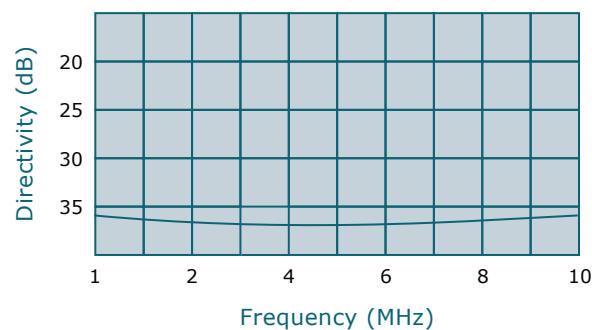
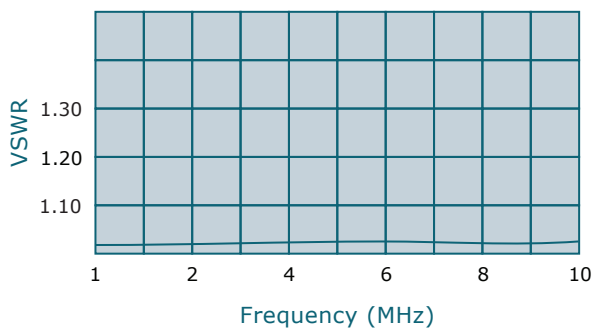
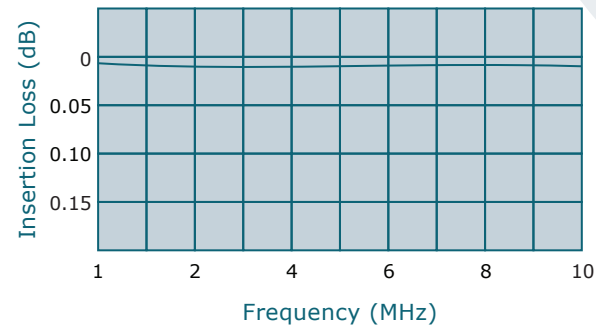
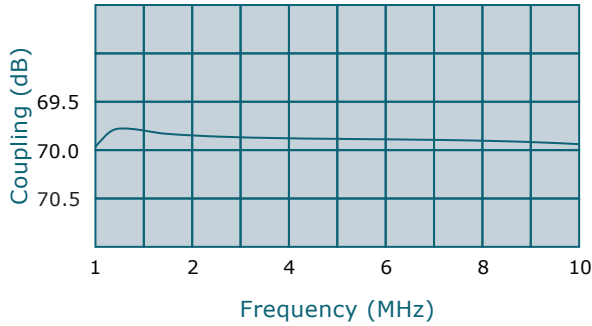
Coupling: 70 dB ± 1.0 dB Nom.

Insertion Loss: 0.05 dB Max.

VSWR: 1.10:1 Max.

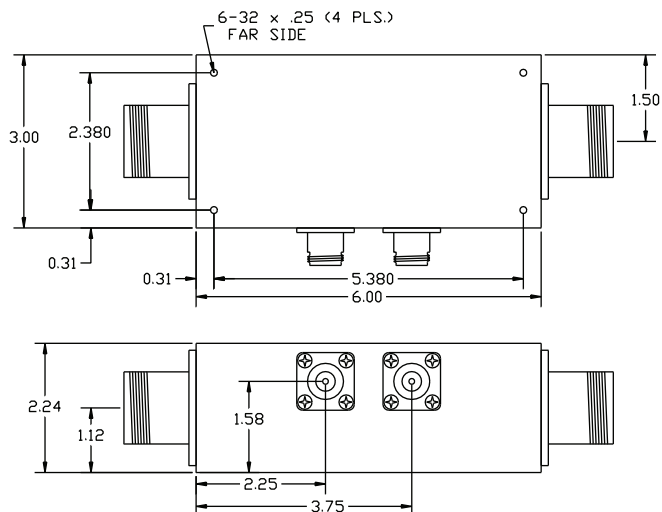
Flatness: +/-0.5 dB Max.

Directivity: 25 dB Min.



- All specifications guaranteed.
- Test data provided with each unit shipped.
- Uni-Directional version available.
- Alternate connector configurations upon request.

Connector Configurations		
Model	J1,J2 (Mainline)	J3,J4 (Coupled Port)
C5845-30	LC Female	N Female
C5845-32	LC Female	SMA
C5845-33	LC Female	BNC
C5845-501	SQS Female	N Female



\*\*Subject to change without notice

high power RF devices