



WERLATONE

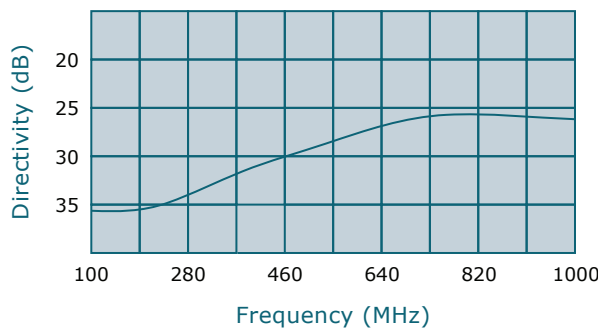
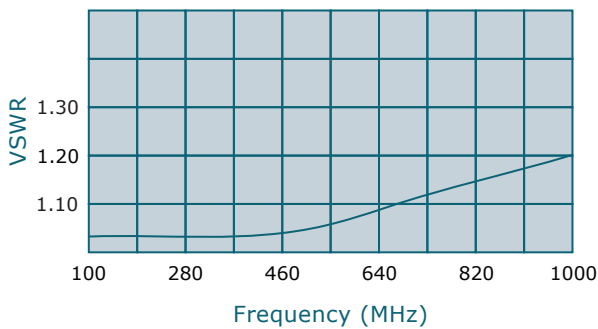
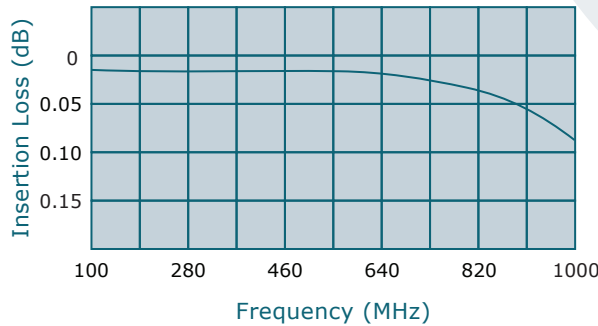
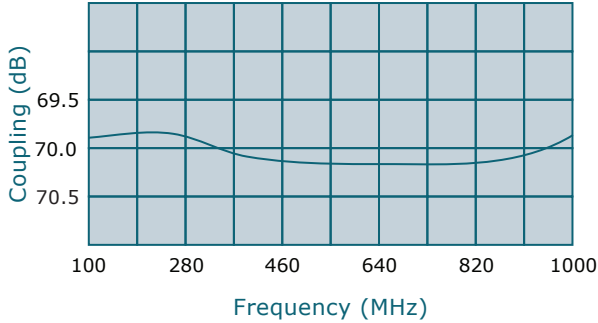
SINCE 1965

Werlatone, Inc.
17 Jon Barrett Road
Patterson, New York 12563
T 845.278.2220
F 845.278.3440
www.werlatone.com



70 dB Dual Directional Coupler

Model C5045



Frequency: 100 - 1000 MHz

Power: 8,000 W CW

Coupling: 70 dB ± 1.0 dB Nom.

Insertion Loss: 0.15 dB Max.

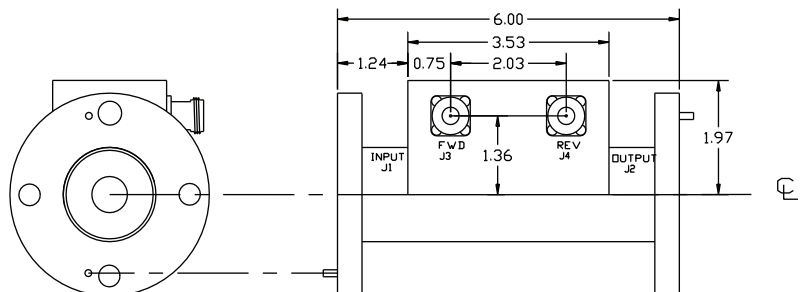
VSWR: 1.30:1 Max.

Flatness: +/-0.6 dB Max.

Directivity: 20 dB Min.

- All specifications guaranteed.
- Test data provided with each unit shipped.
- Uni-Directional version available.

| Connector Configurations | | |
|--------------------------|------------------|----------------------|
| Model | J1,J2 (Mainline) | J3,J4 (Coupled Port) |
| C5045-81 | 1 5/8" EIA | N Female |
| C5045-83 | 1 5/8" EIA | SMA |
| C5045-84 | 1 5/8" EIA | BNC |



**Subject to change without notice

high power RF devices