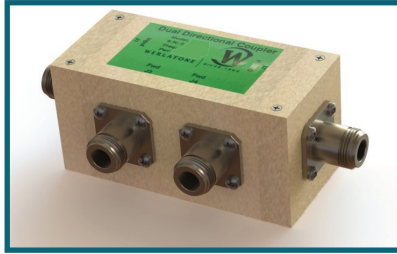




WERLATONE

SINCE 1965

Werlatone, Inc.
17 Jon Barrett Road
Patterson, New York 12563
T 845.278.2220
F 845.278.3440
www.werlatone.com



30 dB Dual Directional Coupler

Model C6165

Frequency: 1-100 MHz

Power: 100 W CW

Coupling: 30 dB ± 1.0 dB Nom.

Insertion Loss: 0.25 dB Max.

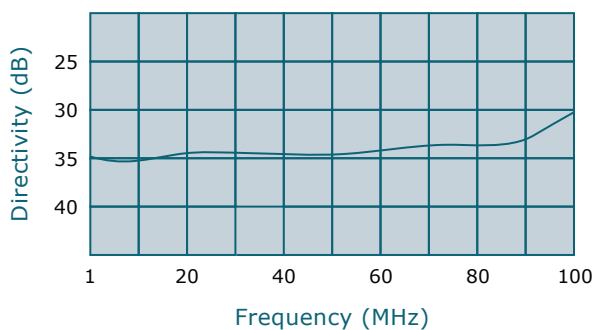
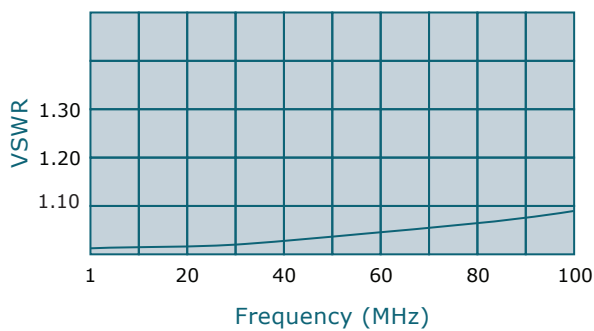
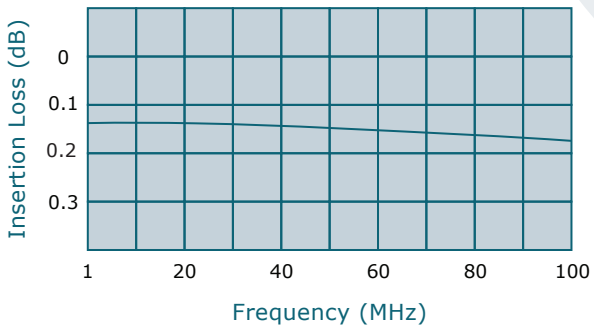
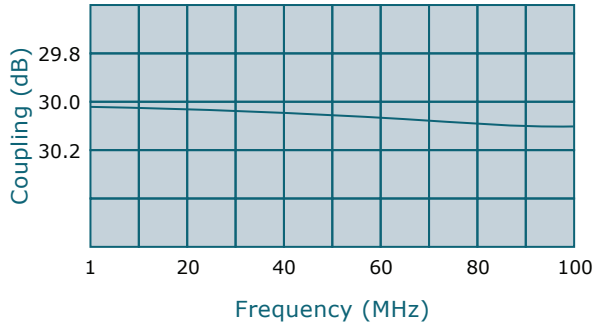
VSWR: 1.15:1 Max.

Flatness: +/- 0.2 dB Max.

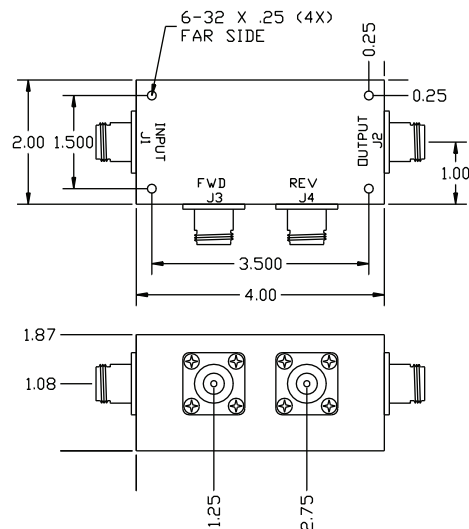
Directivity: 25 dB Min.

*Mismatch Tolerant® Design

- All specifications guaranteed.
- Test data provided with each unit shipped.
- Uni-Directional version available.
- * Designed to operate, at rated power, into an infinite VSWR.



Connector Configurations		
Model	J1,J2 (Mainline)	J3,J4 (Coupled Port)
C6165-10	N Female	N Female
C6165-12	N Female	SMA
C6165-13	N Female	BNC
C6165-102	SMA	SMA



**Subject to change without notice