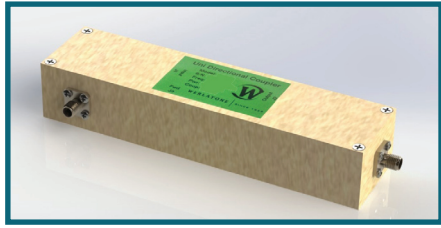




WERLATONE

SINCE 1965

Werlatone, Inc.
17 Jon Barrett Road
Patterson, New York 12563
T 845.278.2220
F 845.278.3440
www.werlatone.com



20 dB Uni Directional Coupler

Model C7800

Frequency: 30-2800 MHz

Power: 20 W CW

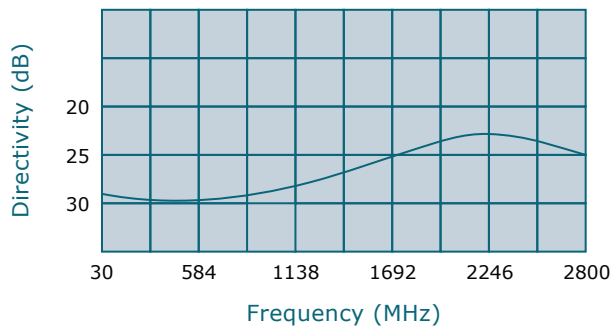
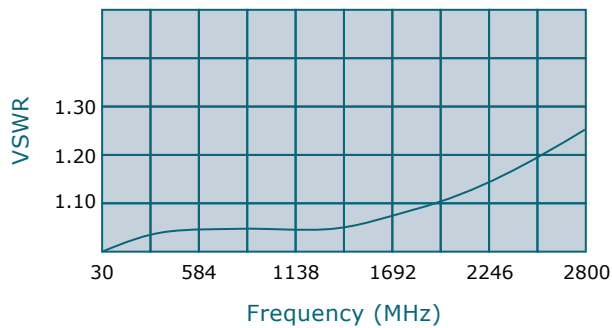
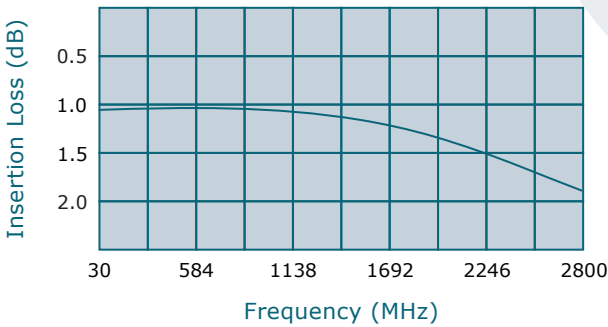
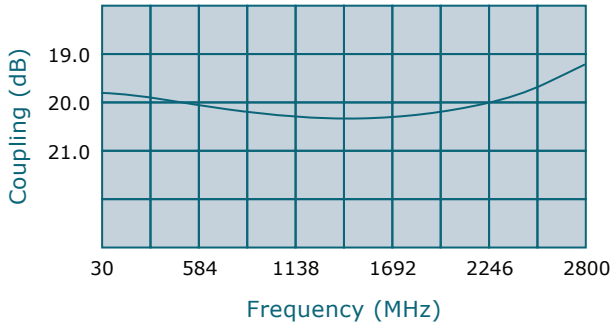
Coupling: 20 dB ± 1.0 dB Nom.

Insertion Loss: 2.25 dB Max.

VSWR: 1.35:1 Max.

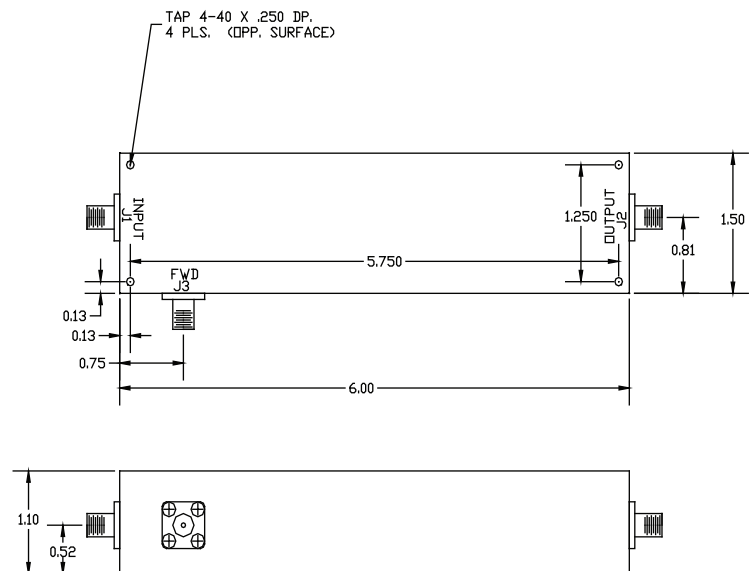
Flatness: +/- 1.0 dB Max.

Directivity: 20 dB Min.



- All specifications guaranteed.
- Test data provided with each unit shipped.

Connector Configurations			
Model	J1 (Input)	J2 (Output)	J3 (Fwd Port)
C7800-102	SMA	SMA	SMA



high power RF devices

**Subject to change without notice