



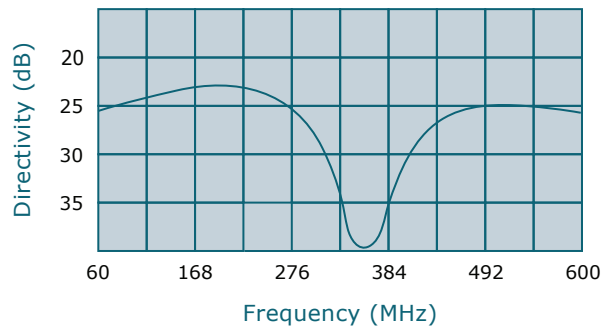
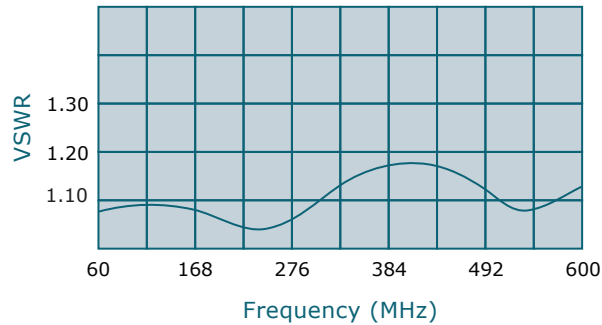
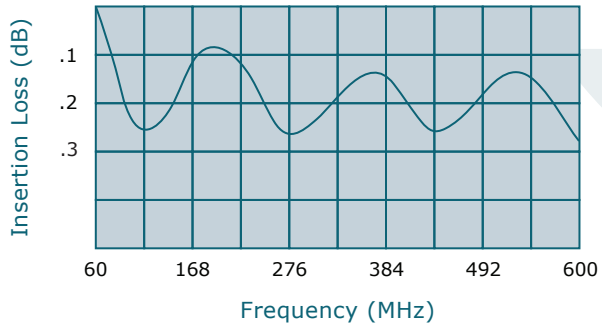
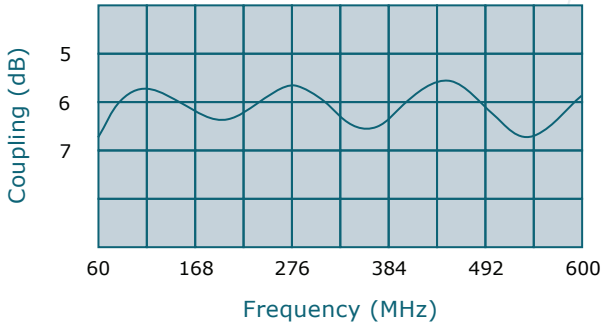
WERLATONE

SINCE 1965

Werlatone, Inc.
17 Jon Barrett Road
Patterson, New York 12563
T 845.278.2220
F 845.278.3440
www.werlatone.com

6 dB Bi-Directional Coupler

Model C6933



Frequency: 60-600 MHz

Power: 200 W CW

Coupling: 6 dB \pm 1.0 dB Nom.

Insertion Loss: 0.35 dB Max.*

VSWR: 1.20:1 Max.

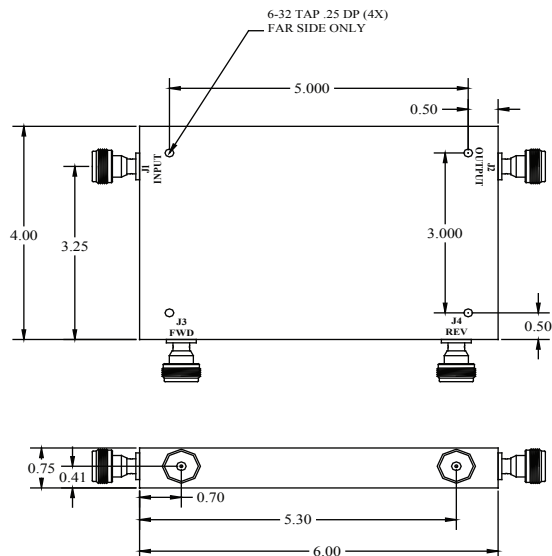
Flatness: \pm 1.0 dB Max.

Directivity: 20 dB Min.

- * Does not include Theoretical Coupling Loss.
- All specifications guaranteed.
- Test data provided with each unit shipped.
- Uni-Directional version available.

Connector Configurations

Model	J1, J2 (Mainline)	J3, J4 (Coupled Port)
C6933-10	N Female	N Female
C6933-12	N Female	SMA
C6933-102	SMA	SMA



**Subject to change without notice