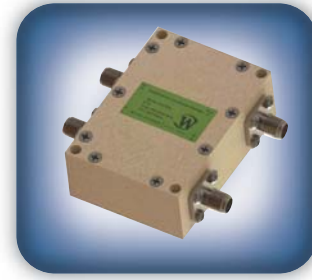




DECADES AHEAD[®]
high power RF devices

Werlatone[®], Inc.

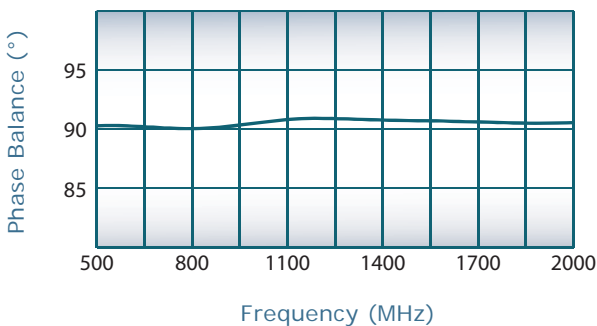
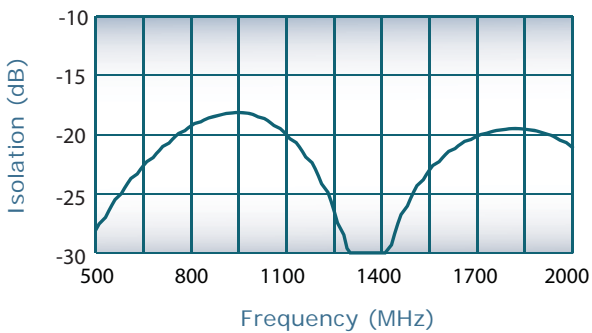
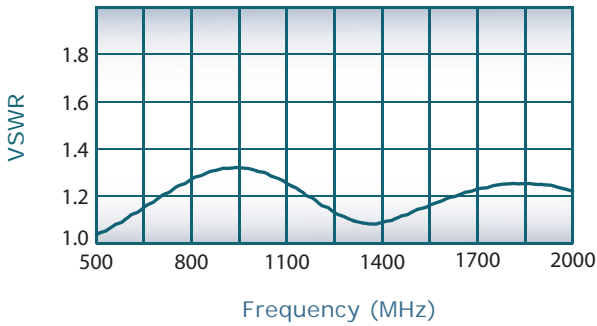
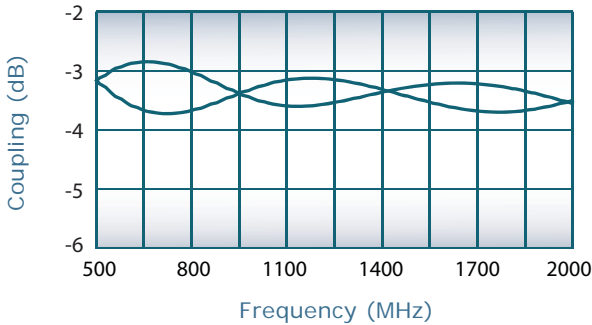
17 Jon Barrett Road Patterson, New York 12563
 T (845) 278 2220 www.werlatone.com
 F (845) 278 3440 sales@werlatone.com



90° Hybrid Coupler

Model QH7856

Frequency:	500 - 2000 MHz
Power:	200 W CW
Insertion Loss:	0.55 dB Max.
VSWR:	1.35:1 Max.
Isolation:	18 dB Min.
Phase Balance:	± 5° Max.
Amplitude Balance:	± 0.5 dB Max.



Notes

- All specifications guaranteed
- Test data provided with each unit shipped
- Weight: 0.4 Ounces
- Alternate connector configurations available upon request
- Operating Temperature: -55°C to +75°C

Connector Configurations

Model	J1 (Sum Port)	J2, J3 (0°, 90°)	J4 (Iso Port)
QH7856-102	SMA	SMA	SMA

