



PRODUCT DATA SHEET

H7877

Werlatone® High Power 180° RF Hybrid Combiners/Dividers balance traditional technologies with disruptive microwave techniques. The outcome is a microwave component which provides an order of magnitude improvement over current capabilities. Our newest line of high power, patented 180° RF Hybrid Combiners/Dividers provides an incredible 5:1 bandwidth, while exhibiting exceptionally low loss and superior port-to-port isolation.

Features:

High Power Wide Bandwidths Small Size Excellent Amplitude Balance

Electrical Specifications:

Frequency: 400 - 2000 MHz
 Power: 350 W CW *
 Insertion Loss: 0.5 dB Max.
 VSWR: 1.40:1 Max.
 Phase Balance: $180^\circ \pm 5^\circ$ Max.
 Amplitude Balance: ± 0.3 dB Max.
 Isolation: 20 dB Min.

Mechanical Specifications:

Type: Connectorized
 Material: Aluminum 6061-T6
 Surface Finish: Chem. Film Per MIL-DTL-5541F Type I Class 3 (Yellow Iridite) RoHS Compliant Available
 Operating Temperature: -55°C to +75°C
 Storage Temperature: -60°C to +85°C
 Weight: 14 oz.
 Size: 4.5 x 2.65 x 1.2"

Connector Configurations:

Model	Sum Port (J4)	Inputs (J2,J3)	Diff. Port (J1)
H7877-10	N Female	N Female	N Female
H7877-12	N Female	SMA	SMA
H7877-102	SMA	SMA	SMA

POWER SPECIFICATION: * 350 W CW with maximum baseplate temperature of $\leq +70^\circ\text{C}$ 300 W CW with maximum baseplate temperature of $\leq +85^\circ\text{C}$

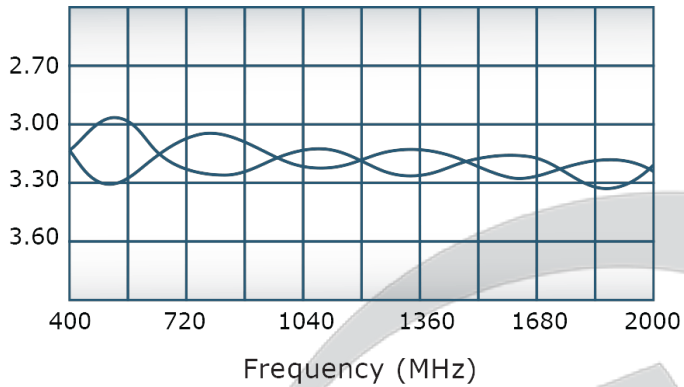


PRODUCT DATA SHEET

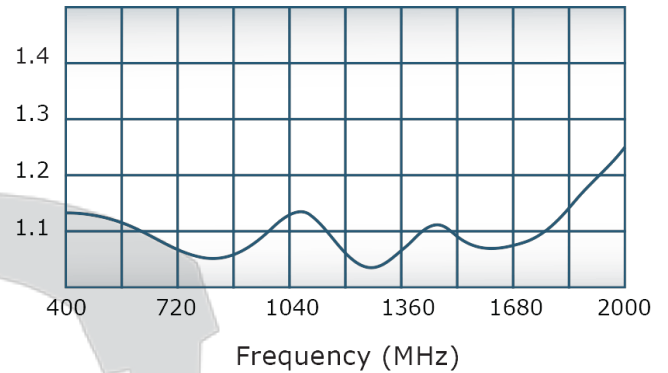
H7877

Performance Data (Specifications subject to change without notice):

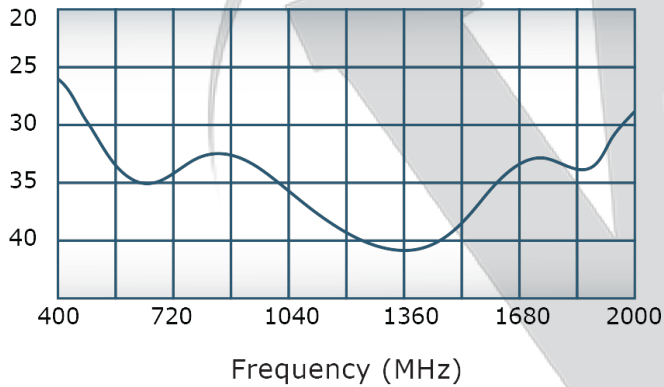
Insertion Loss:



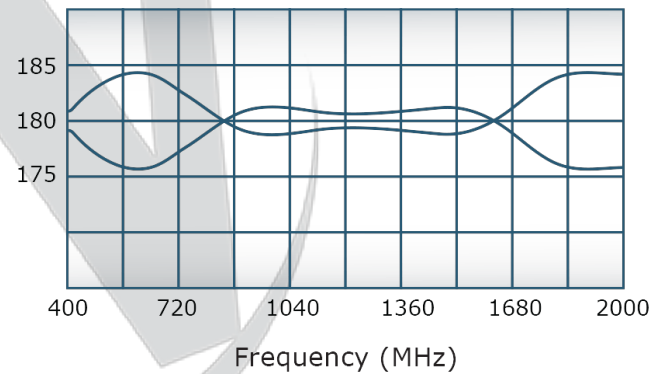
VSWR:



Isolation:

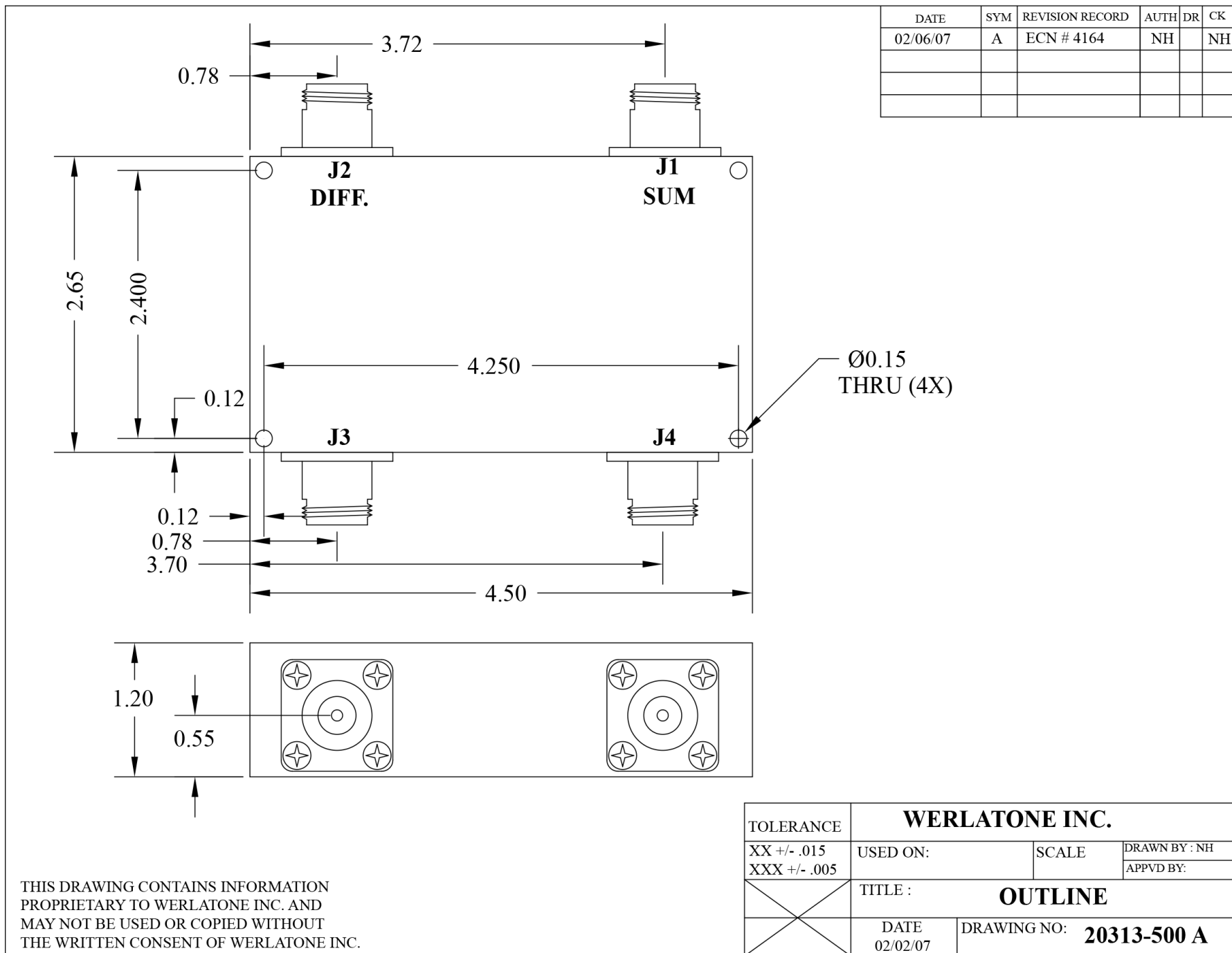


Phase Balance:



Restriction on use, duplication, or disclosure of proprietary information. This document contains proprietary information which is the sole property of Werlatone, Inc.

Werlatone, Inc. 17 Jon Barrett Road Patterson, NY 12563 T:(845)278-2220 F:(845)278-3440 sales@werlatone.com www.werlatone.com



Restriction on use, duplication, or disclosure of proprietary information. This document contains proprietary information which is the sole property of Werlatone, Inc. Werlatone, Inc. 17 Jon Barrett Road Patterson, NY 12563 T:(845)278-2220 F:(845)278-3440 sales@werlatone.com www.werlatone.com