
PRODUCT DATA SHEET
QH7622
Our patented 3 dB 90° Hybrid Couplers provide:

- Superior component performance starting at 3:1 Bandwidth.
- Thicker center boards for high power and increased repeatability.
- Bonded structures which eliminate any air gaps between substrates.
- More sections per bandwidth for better coupling flatness.
- Electrically shorter and physically smaller RF components.

Features:

High Power Wide Bandwidths Small Size Excellent Amplitude Balance

Electrical Specifications:

Frequency: 500 - 3000 MHz
Power: 150 W CW
Insertion Loss: 0.55 dB Max.
VSWR: 1.35:1 Max.
Phase Balance: $\pm 5^\circ$ dB Max.
Amplitude Balance: ± 0.6 dB Max.
Isolation: 19 dB Min.

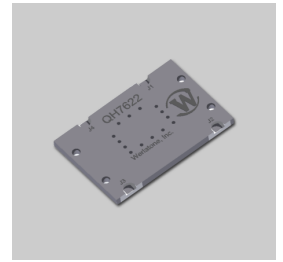
Mechanical Specifications:

Type: Surface Mount
Plating Options: QH7622-Sn: Immersion Tin (RoHS)
QH7622-Ag: Immersion Silver (RoHS)
QH7622-Au: ENIG (RoHS)
Size: 1.65 x 1.1 x 0.09"
Weight: 0.1 lb

Port Configurations:

J1	J2	J3	J4
Sum	-3 dB, 0°	-3 dB, -90°	Isolated
-3 dB, 0°	Sum	Isolated	-3 dB, -90°
-3 dB, -90°	Isolated	Sum	-3 dB, 0°
Isolated	-3 dB, -90°	-3 dB, 0°	Sum

Werlatone's breakthrough technology allows us to build our existing line of Broadband 3 dB High Power 90° Hybrid Couplers. Connectorized 3 dB 90° Hybrid Coupler models are available with a choice of connectors. Several of our existing High Power 3 dB 90° RF Couplers are three port designs, wherein the difference port is internally terminated with a high power termination. This eliminates the need for a customer supplied external load for each Hybrid Coupler.

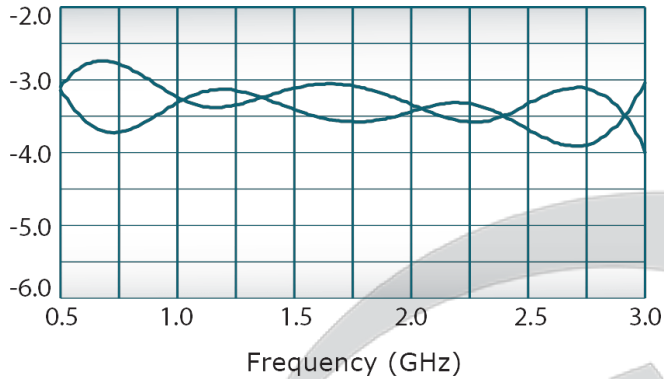


PRODUCT DATA SHEET

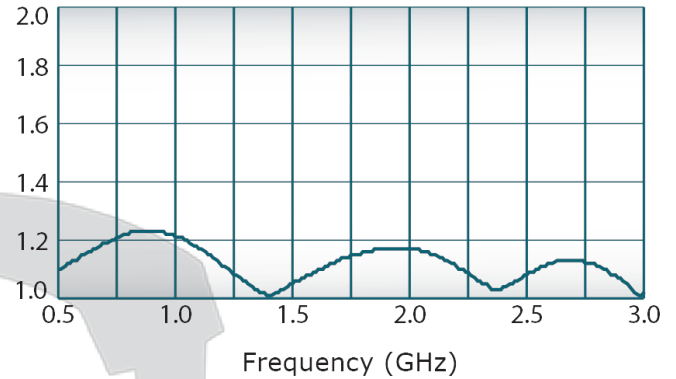
QH7622

Performance Data (Specifications subject to change without notice):

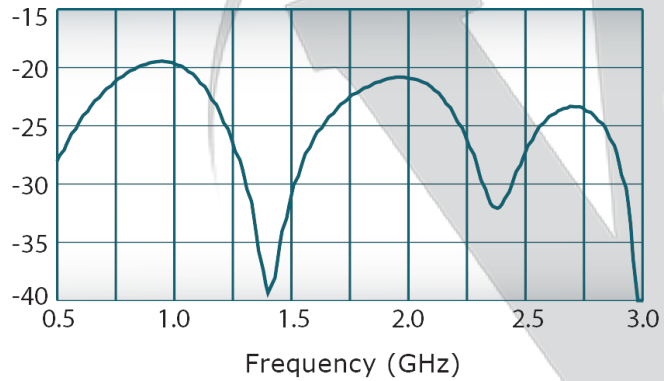
Coupling:



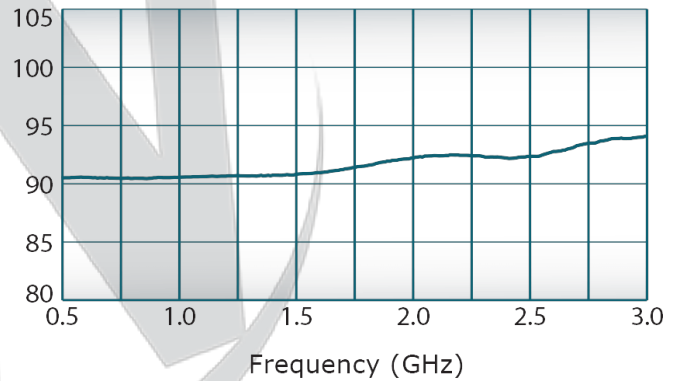
VSWR:



Isolation:



Phase Balance:



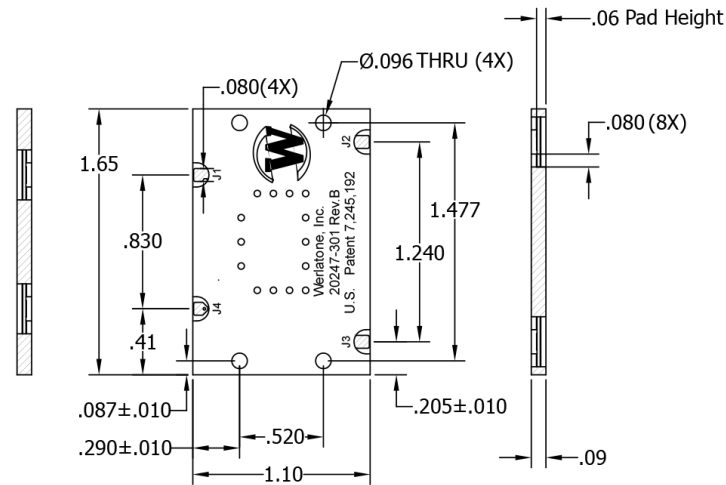
Restriction on use, duplication, or disclosure of proprietary information. This document contains proprietary information which is the sole property of Werlatone, Inc.

Werlatone, Inc. 17 Jon Barrett Road Patterson, NY 12563 T:(845)278-2220 F:(845)278-3440 sales@werlatone.com www.werlatone.com

RESTRICTION ON USE, DUPLICATION OR
DISCLOSURE OF PROPRIETARY INFORMATION
This document contains proprietary information
which is the sole property of Werlatone, Inc.

REVISION HISTORY					
DATE	REV	REVISION RECORD	AUTH	CHK	APPV
8/30/2006	-	INITIAL RELEASE	GP	NH	BW
10/6/2009	A	ECN 4977	GP	NH	BW
9/8/2010	B	ECN 5225	GP	NH	BW
3/8/11	C	ECN 5314	GP	NH	BW

Hatched Areas
Denote Edge Plating



UNLESS OTHERWISE SPECIFIED		DWN	DATE	8/30/06		W WERLATONE SINCE 1965		17 Jon Barrett Rd Patterson, NY 12563	
INTERPRET DRAWING LAW MIL-STD-100		GP	DATE	8/30/06		TITLE			
DIMENSIONING PER ASME Y14.5M-2009		CHK	DATE						
PARAMETRIC INFO FOR REF ONLY		ENGR	DATE						
DIMENSIONS ARE IN INCHES		QA	DATE			USED ON			
TOLERANCES: ANGLE ± 2°		RLSE	DATE			SIZE		REV	
3 PL DECIMALS ± .005						A		C	
2 PL DECIMALS ± .015						CAGE CODE		DWG NO	
THIRD ANGLE PROJECTION						28812		20247-500	
						SCALE		SHEET 1 OF 1	
						1:1			

Restriction on use, duplication, or disclosure of proprietary information. This document contains proprietary information which is the sole property of Werlatone, Inc.
Werlatone, Inc. 17 Jon Barrett Road Patterson, NY 12563 T:(845)278-2220 F:(845)278-3440 sales@werlatone.com www.werlatone.com