



PRODUCT DATA SHEET

C2018

3-Port Uni-Directional Coupler: Consists of a main line and a coupled line. One end of the coupled line is internally terminated, while the other end serves as a coupled port. Ideal for sampling and monitoring power in one direction at a given time. It is necessary to physically reverse the orientation of the unit to change from a forward to a reverse power measurement

Features:

High Power Wide Bandwidths Small Size Flat Coupling Custom Designs Available

Electrical Specifications:

Frequency: 2 - 400 MHz
 Power: 200 W CW
 Coupling: 40 ± 1.0 dB Max.
 Insertion Loss: 0.3 dB Max.
 Flatness: ± 0.75 dB Max.
 VSWR (ML): 1.05:1 Max.
 Directivity: 30 dB Min.

Mechanical Specifications:

Type: Connectorized
 Material: Aluminum 6061-T6
 Surface Finish: Chem. Film Per MIL-DTL-5541F
 Type I Class 3 (Yellow Iridite)
 RoHS Compliant Available
 Operating Temperature: -55°C to +75°C
 Storage Temperature: -60°C to +85°C
 Humidity: 95% Non-Condensing
 Size: 5.75 x 2.02 x 1.52"

Connector Configurations:

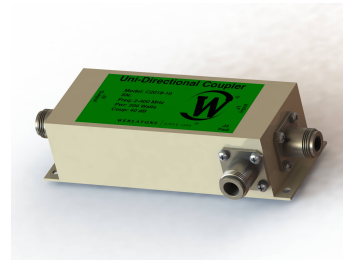
Model	Input (J1)	Output (J2)	Fwd (J3)
C2018-10	N Female	N Female	N Female
C2018-12	N Female	N Female	SMA
C2018-13	N Female	N Female	BNC
C2018-102	SMA	SMA	SMA

Werlatone® Broadband Dual, Uni, and Bi Directional RF Couplers are designed to tolerate the most stringent operating conditions associated with military and EMC testing environments. Many of our RF Directional Couplers, designated Mismatch Tolerant®, will operate continuously, at rated power, into a severe load mismatch condition. Our multi-octave Directional Couplers maintain exceptional coupling flatness, directivity, VSWR, and insertion loss.



WERLATONE

Model C2018

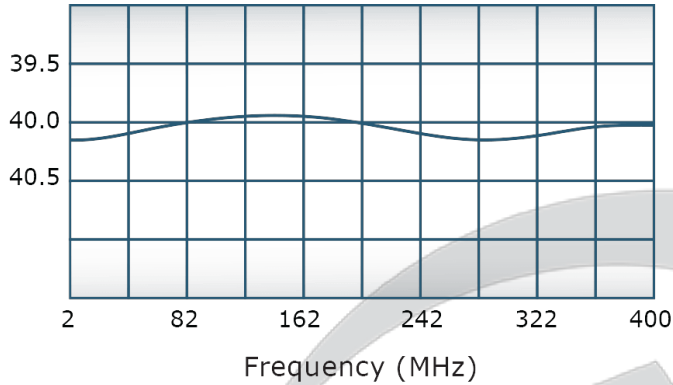


PRODUCT DATA SHEET

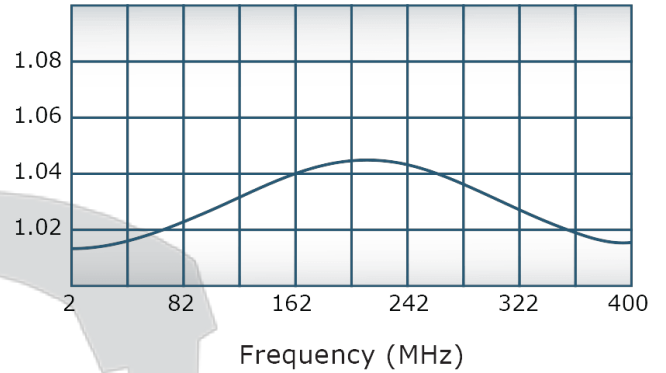
C2018

Performance Data (Specifications subject to change without notice):

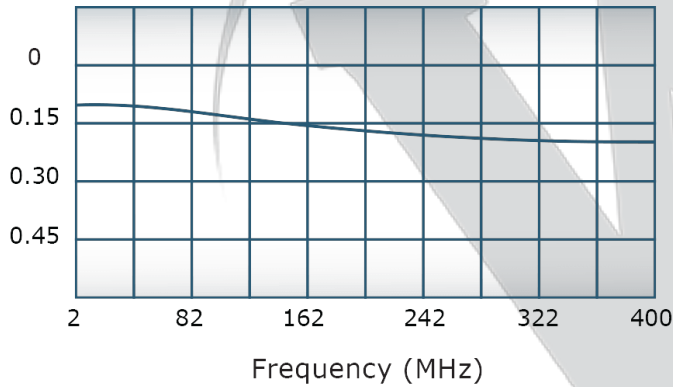
Coupling:



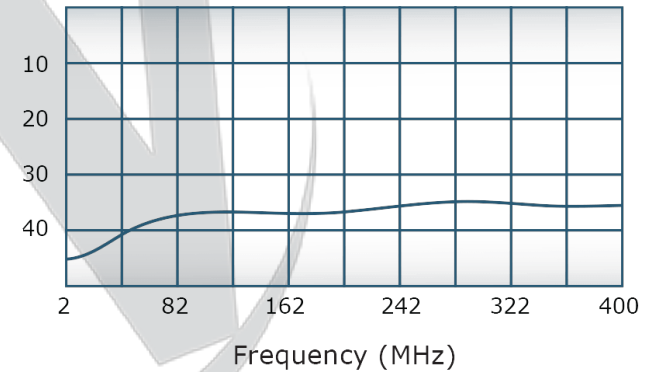
VSWR:



Insertion Loss:



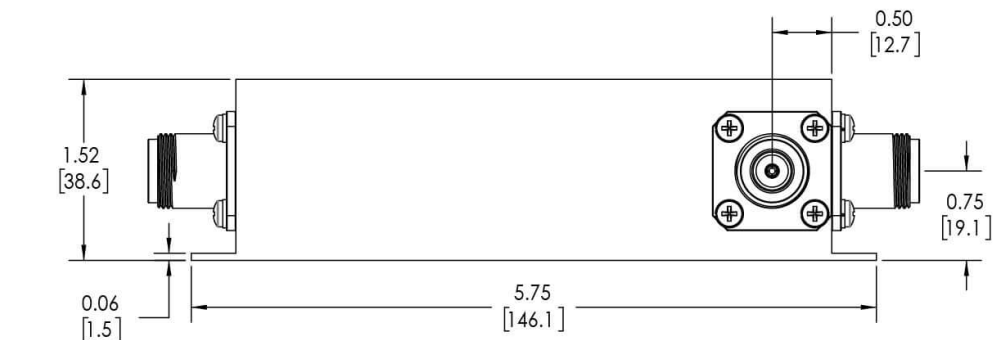
Directivity:



Restriction on use, duplication, or disclosure of proprietary information. This document contains proprietary information which is the sole property of Werlatone, Inc.

Werlatone, Inc. 17 Jon Barrett Road Patterson, NY 12563 T:(845)278-2220 F:(845)278-3440 sales@werlatone.com www.werlatone.com



This document contains proprietary information
which is the sole property of Werlatone, Inc.



REVISION HISTORY			
REV.	REVISION RECORD	DATE	APPROVED
A	CONN.	2/1/1986	DK
B	ECN 1040	6/12/1988	DK
C	ECN 1071	8/7/1989	MJ
D	ECN 9696	5/15/2019	RB

NOTES: UNLESS OTHERWISE SPECIFIED

1. MATERIAL: ALUMINUM 6061-T6
2. FINISH: CHEM FILM PER MIL-DTL-5541F TYPE I CLASS 3 (YELLOW IRIDITE)
3. CONNECTORS:
J1-J3: N FEMALE

		UNLESS OTHERWISE SPECIFIED		OWN	DATE	 WERLATONE_® SINCE 1965		17 Jon Barrett Rd Patterson, NY 12563	
		INTERPRET DRAWING IAW MIL-STD-100 DIMENSIONS PER ASME Y14.5-2009 MATHEMATICAL INFO FOR REF ONLY DIMENSIONS ARE IN INCHES DIMENSIONAL LIMITS APPLY BEFORE PROCESSES TOLERANCES: ANGLES ± 2° 3 PL ± .005 [1:1] 2 PL ± .015 [3:1] REMOVE ALL BURS AND SHARP EDGES R0.1 MAX CONCENTRICITY MACHINED DIA .000 F3H MACHINE TYPK HSHDRGH .003 MAX		SD	5/14/2019				
				CHK	DATE	<div>OUTLINE</div>			
				CS	5/14/2019				
				ENGR	DATE	<div>SCALE</div>		<div>1:1</div>	
				MFRG	DATE				
				QA	DATE	<div>SIZE</div> <div>CAGE CODE</div> <div>DWG NO</div> <div>10064-500</div>		<div>REV</div> <div>D</div>	
				RLSE	DATE				
NEXT ASSY		USED ON							
APPLICATION		THIRD ANGLE PROJECTION 						SHEET 1 OF 1	

Werlatone, Inc. 17 Jon Barrett Road Patterson, NY 12563 T:(845)278-2220 F:(845)278-3440 sales@werlatone.com www.werlatone.com