
**PRODUCT DATA SHEET**
**C3807**

**4-Port Dual Directional Coupler** employs two, 3-Port Uni-Directional Couplers, internally connected, in tandem, providing measurement of both forward and reverse power. Ideal for simultaneously monitoring a system's forward and reverse power and for reflectometer measurements. Unlike the Bi-Directional Coupler, the directivity of the Dual Directional Coupler is unaffected by the loads on the coupled ports.

**Features:**

High Power      Wide Bandwidths      Small Size      Flat Coupling      Custom Designs Available

**Electrical Specifications:**

Frequency: 0.03 - 30 MHz  
Power: 5250 W CW  
Coupling: 50 ± 1.0 dB Max.  
Insertion Loss: 0.05 dB Max.  
Flatness: ± 0.5 dB Max.  
VSWR (ML): 1.10:1 Max.  
Directivity: 20 dB Min.

**Mechanical Specifications:**

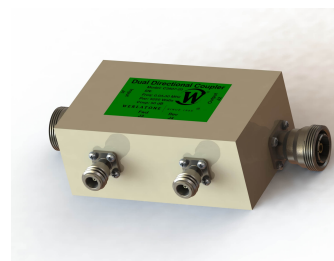
Type: Connectorized  
Material: Aluminum 6061-T6  
Surface Finish: Chem. Film Per MIL-DTL-5541F  
Type I Class 3 (Yellow Iridite)  
RoHS Compliant Available  
Operating Temperature: -55°C to +75°C  
Storage Temperature: -60°C to +85°C  
Humidity: 95% Non-Condensing  
Size: 5.0 x 3.0 x 2.24"

**Connector Configurations:**

Model	Input (J1)	Output (J2)	Fwd (J3)	Rev (J4)
C3807-10	N Female	N Female	N Female	N Female
C3807-12	N Female	N Female	SMA	SMA
C3807-13	N Female	N Female	BNC	BNC
C3807-20	7/16 Female	7/16 Female	N Female	N Female
C3807-23	7/16 Female	7/16 Female	BNC	BNC
C3807-30	LC Female	LC Female	N Female	N Female
C3807-64	HN Female	HN Female	BNC Female	BNC Female
C3807-751	HN Female	HN Male	BNC Female	BNC Female
C3807-QC-0	QC Block	QC Block	N Female	N Female
C3807-QC-2	QC Block	QC Block	SMA	SMA
C3807-7501	SQS Male	SQS Female	N Female	N Female
C3807-7503	SQS Male	SQS Female	BNC	BNC

**Restriction on use, duplication, or disclosure of proprietary information.** This document contains proprietary information which is the sole property of Werlatone, Inc.

Werlatone, Inc. 17 Jon Barrett Road Patterson, NY 12563 T:(845)278-2220 F:(845)278-3440 sales@werlatone.com www.werlatone.com

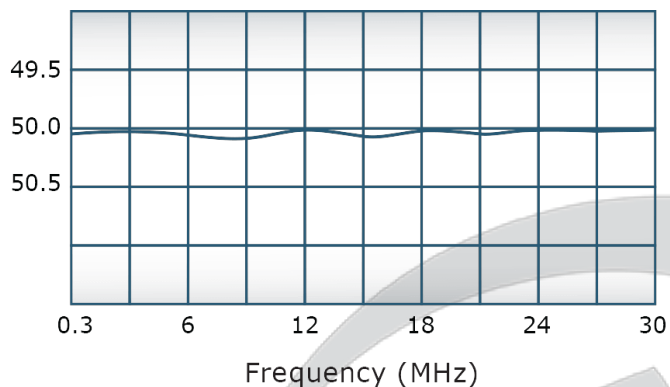


## PRODUCT DATA SHEET

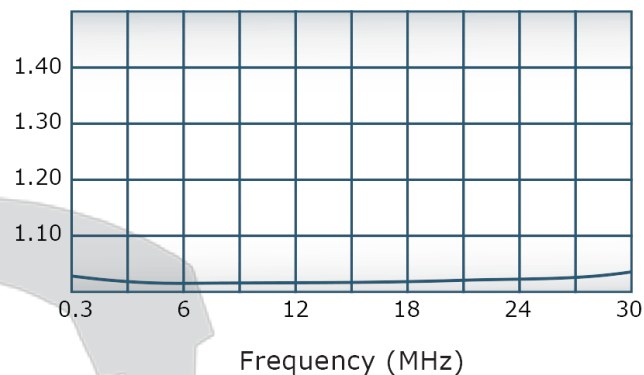
C3807

### Performance Data (Specifications subject to change without notice):

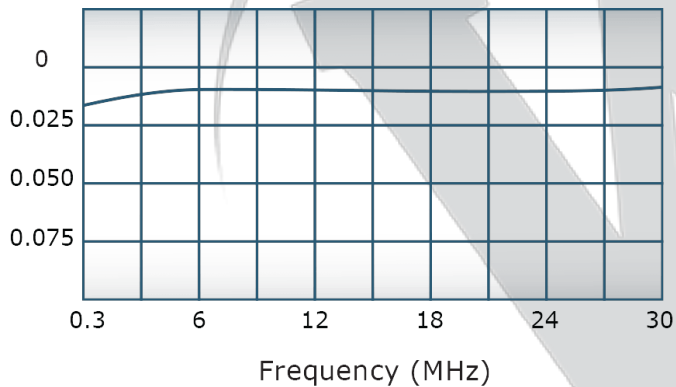
Coupling:



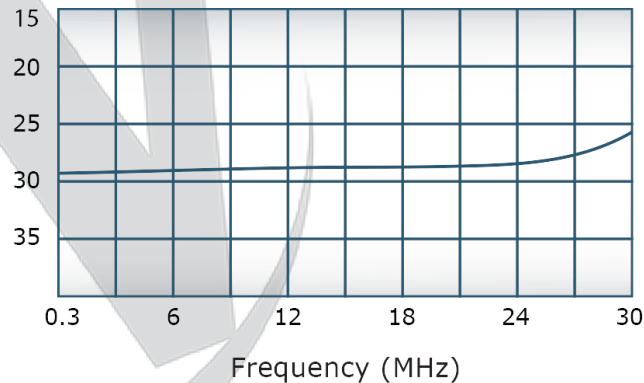
VSWR:



Insertion Loss:

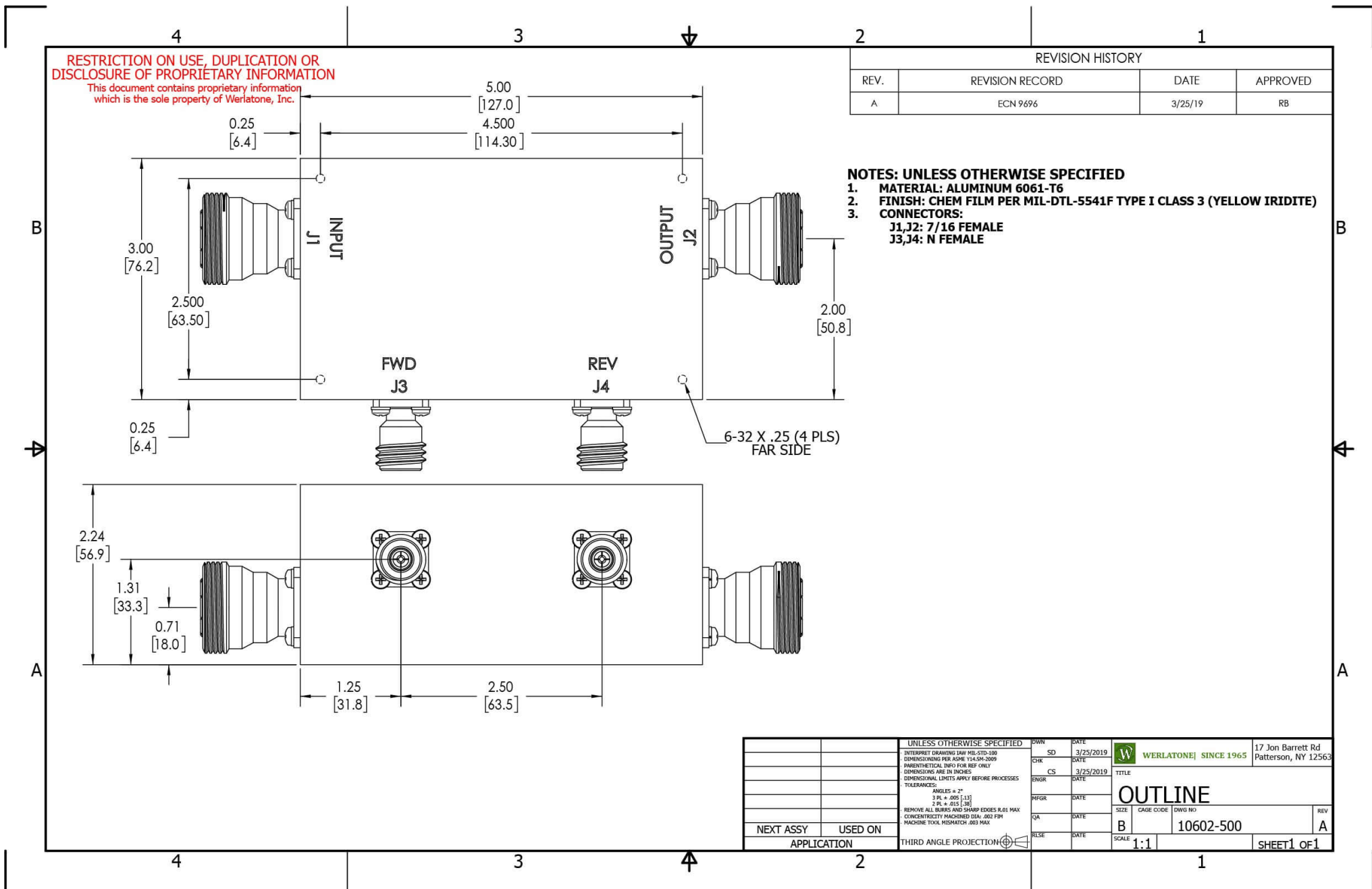


Directivity:



**Restriction on use, duplication, or disclosure of proprietary information.** This document contains proprietary information which is the sole property of Werlatone, Inc.

Werlatone, Inc. 17 Jon Barrett Road Patterson, NY 12563 T:(845)278-2220 F:(845)278-3440 sales@werlatone.com www.werlatone.com



**Restriction on use, duplication, or disclosure of proprietary information.** This document contains proprietary information which is the sole property of Werlatone, Inc.  
Werlatone, Inc. 17 Jon Barrett Road Patterson, NY 12563 T:(845)278-2220 F:(845)278-3440 sales@werlatone.com www.werlatone.com