

## PRODUCT DATA SHEET

C6070

**4-Port Dual Directional Coupler** employs two, 3-Port Uni-Directional Couplers, internally connected, in tandem, providing measurement of both forward and reverse power. Ideal for simultaneously monitoring a system's forward and reverse power and for reflectometer measurements. Unlike the Bi-Directional Coupler, the directivity of the Dual Directional Coupler is unaffected by the loads on the coupled ports.

### Features:

High Power      Wide Bandwidths      Small Size      Flat Coupling      Custom Designs Available

### Electrical Specifications:

Frequency: 1.5 - 30 MHz  
 Power: 2500 W CW  
 Coupling:  $40 \pm 1.0$  dB Max.  
 Insertion Loss: 0.1 dB Max.  
 Flatness:  $\pm 0.25$  dB Max.  
 VSWR (ML): 1.05:1 Max.  
 Directivity: 25 dB Min.

### Mechanical Specifications:

Type: Connectorized  
 Material: Aluminum 6061-T6  
 Surface Finish: Chem. Film Per MIL-DTL-5541F  
 Type I Class 3 (Yellow Iridite)  
 RoHS Compliant Available  
 Operating Temperature: -55°C to +75°C  
 Storage Temperature: -60°C to +85°C  
 Humidity: 95% Non-Condensing  
 Size: 6.46 x 2.52 x 1.2"

### Port Configurations:

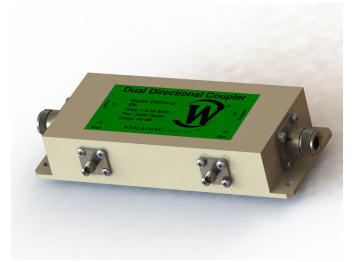
Model	Input (J1)	Output (J2)	Fwd (J3)	Rev (J4)
C6070-10	N Female	N Female	N Female	N Female
C6070-12	N Female	N Female	SMA	SMA
C6070-13	N Female	N Female	BNC	BNC
C6070-20	7/16 Female	7/16 Female	N Female	N Female
C6070-22	7/16 Female	7/16 Female	SMA	SMA
C6070-23	7/16 Female	7/16 Female	BNC	BNC

**Werlatone®** Broadband Dual, Uni, and Bi Directional RF Couplers are designed to tolerate the most stringent operating conditions associated with military and EMC testing environments. Many of our RF Directional Couplers, designated Mismatch Tolerant®, will operate continuously, at rated power, into a severe load mismatch condition. Our multi-octave Directional Couplers maintain exceptional coupling flatness, directivity, VSWR, and insertion loss.



# WERLATONE

Model C6070

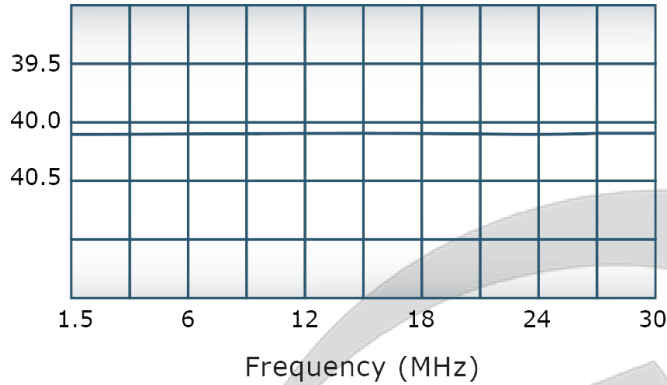


## PRODUCT DATA SHEET

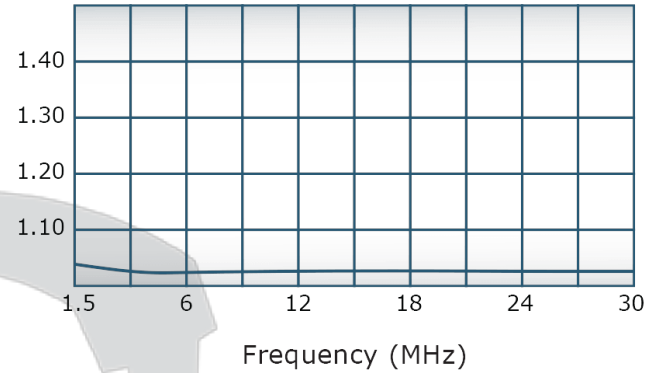
C6070

### Performance Data (Specifications subject to change without notice):

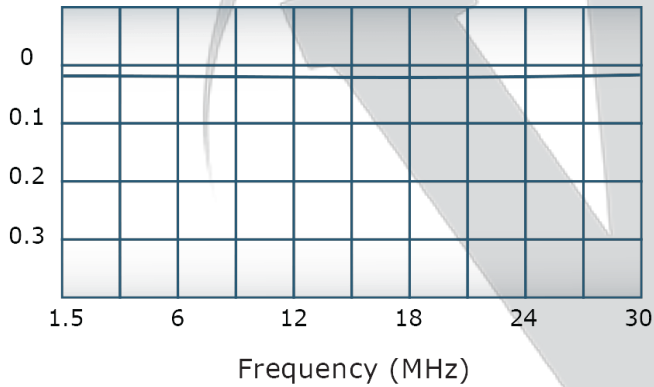
Coupling:



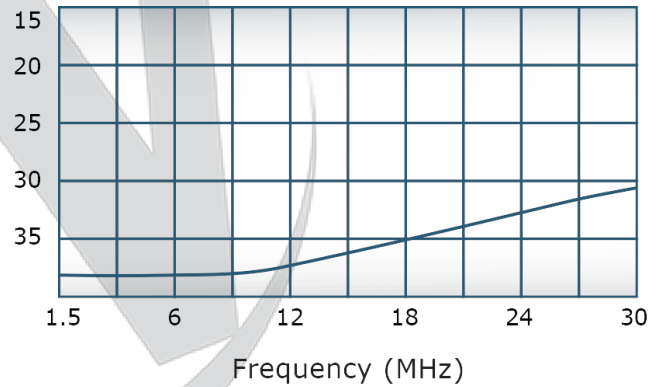
VSWR:



Insertion Loss:



Directivity:



**Restriction on use, duplication, or disclosure of proprietary information.** This document contains proprietary information which is the sole property of Werlatone, Inc.

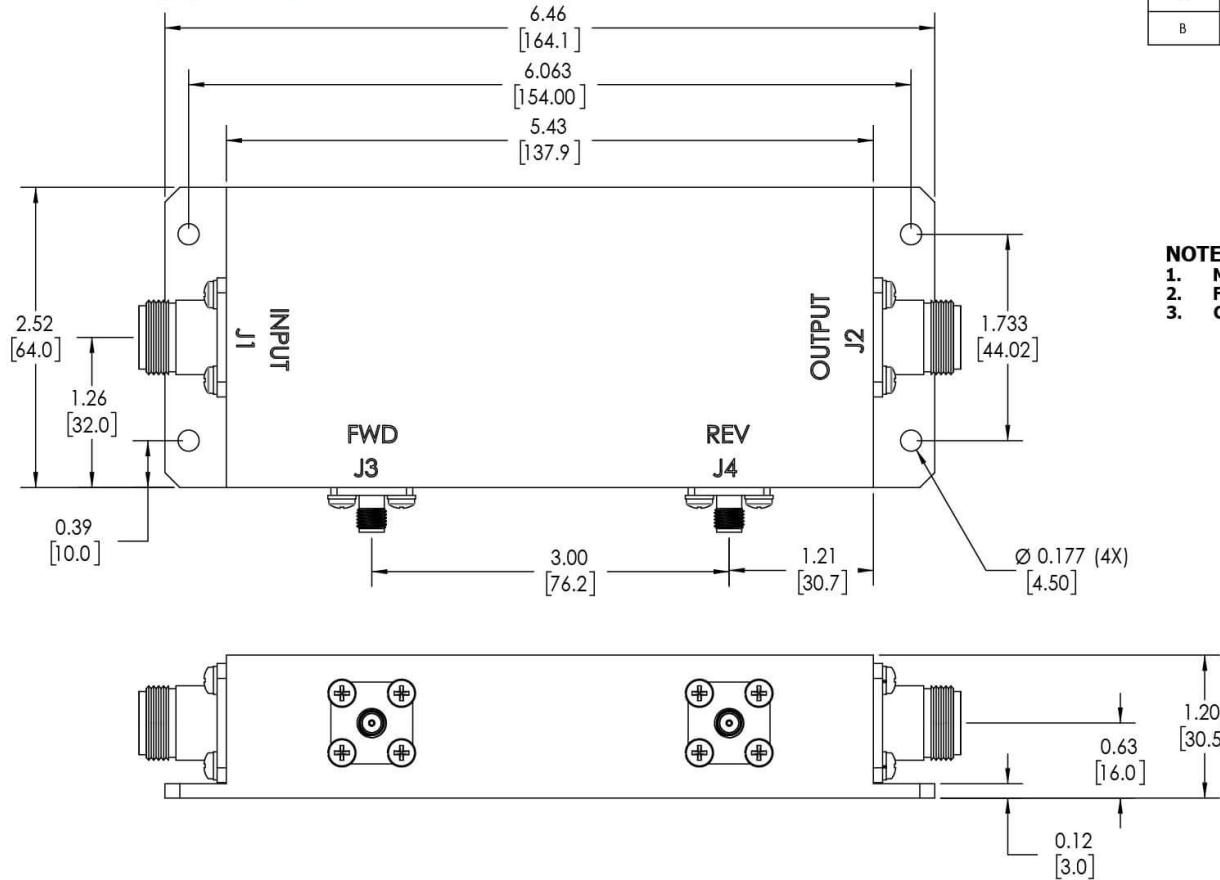
Werlatone, Inc. 17 Jon Barrett Road Patterson, NY 12563 T:(845)278-2220 F:(845)278-3440 sales@werlatone.com www.werlatone.com

**RESTRICTION ON USE, DUPLICATION OR DISCLOSURE OF PROPRIETARY INFORMATION**  
 This document contains proprietary information which is the sole property of Werlatone, Inc.

REVISION HISTORY			
REV.	REVISION RECORD	DATE	APPROVED
A	ECN 1968	3/7/01	BW
B	ECN 9696	3/25/19	RB

**NOTES: UNLESS OTHERWISE SPECIFIED**

- MATERIAL: ALUMINUM 6061-T6**
- FINISH: CHEM FILM PER MIL-DTL-5541F TYPE I CLASS 3 (YELLOW IRIDITE)**
- CONNECTORS:**  
 J1, J2: N FEMALE  
 J3, J4: SMA FEMALE



<div>UNLESS OTHERWISE SPECIFIED</div> <div>INTERPRET DRAWING IN ACCORDANCE WITH MIL-STD-100</div> <div>DIMENSIONS FOR ASME Y14.5M-2009</div> <div>PARENTHESES FOR REF ONLY</div> <div>DIMENSIONS ARE IN INCHES</div> <div>DIMENSIONAL LIMITS APPLY BEFORE PROCESSES</div> <div>TOLERANCES:</div> <div>    ANGLES ± 2°</div> <div>    3 PL ± .005 [ .13]</div> <div>    2 PL ± .015 [ .38]</div> <div>REMOVE ALL BURRS AND SHARP EDGES R.01 MAX</div> <div>CONCENTRICITY MACHINED DIA. .002 FIM</div> <div>MACHINE TOOL MISMATCH .003 MAX</div>		OWN	DATE	<div><div><div></div></div><div>WERLATONE</div><div>SINCE 1965</div></div> <div>17 Jon Barrett Rd Patterson, NY 12563</div>	
		SD	3/25/2019		
		CHK	DATE		
		CS	3/25/2019		
		ENGR	DATE		
<div>NEXT ASSY</div> <div>USED ON</div>		MPGR	DATE	<div>TITLE</div> <div>OUTLINE</div> <div>SIZE CAGE CODE DWG NO</div> <div>B10194-500</div>	REV
		QA	DATE		
		RLSE	DATE		
		THIRD ANGLE PROJECTION			
		APPLICATION			
		SCALE	1:1	SHEET 1 OF 1	

**Restriction on use, duplication, or disclosure of proprietary information.** This document contains proprietary information which is the sole property of Werlatone, Inc.  
 Werlatone, Inc. 17 Jon Barrett Road Patterson, NY 12563 T:(845)278-2220 F:(845)278-3440 sales@werlatone.com www.werlatone.com