

PRODUCT DATA SHEET

C7800

3-Port Uni-Directional Coupler: Consists of a main line and a coupled line. One end of the coupled line is internally terminated, while the other end serves as a coupled port. Ideal for sampling and monitoring power in one direction at a given time. It is necessary to physically reverse the orientation of the unit to change from a forward to a reverse power measurement.

Features:

High Power Wide Bandwidths Small Size Flat Coupling Custom Designs Available

Electrical Specifications:

Frequency: 30 - 2800 MHz
 Power: 20 W CW
 Coupling: 20 ± 1.0 dB Max.
 Insertion Loss: 2.25 dB Max.
 Flatness: ± 1.0 dB Max.
 VSWR (ML): 1.35:1 Max.
 Directivity: 20 dB Min.

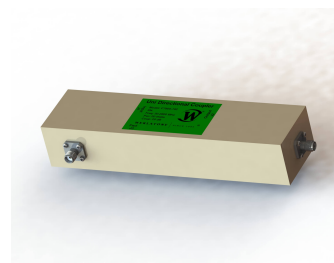
Mechanical Specifications:

Type: Connectorized
 Material: Aluminum 6061-T6
 Surface Finish: Chem. Film Per MIL-DTL-5541F
 Type I Class 3 (Yellow Iridite)
 RoHS Compliant Available
 Operating Temperature: -55°C to +75°C
 Storage Temperature: -60°C to +85°C
 Humidity: 95% Non-Condensing
 Size: 6.0 x 1.5 x 1.1"

Connector Configurations:

Model	Input (J1)	Output (J2)	Fwd (J3)
C7800-10	N Female	N Female	N Female
C7800-12	N Female	N Female	SMA
C7800-102	SMA	SMA	SMA

Werlatone® Broadband Dual, Uni, and Bi Directional RF Couplers are designed to tolerate the most stringent operating conditions associated with military and EMC testing environments. Many of our RF Directional Couplers, designated Mismatch Tolerant®, will operate continuously, at rated power, into a severe load mismatch condition. Our multi-octave Directional Couplers maintain exceptional coupling flatness, directivity, VSWR, and insertion loss.

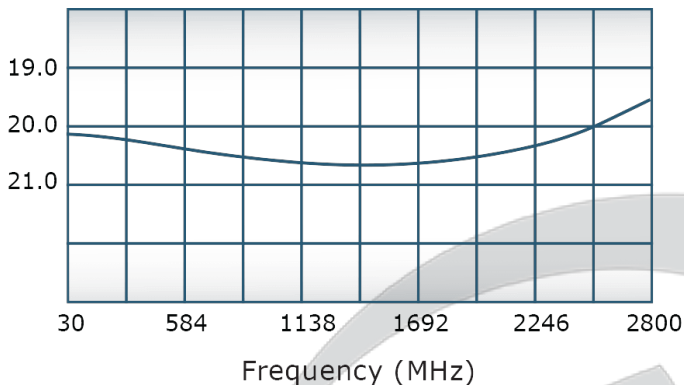


PRODUCT DATA SHEET

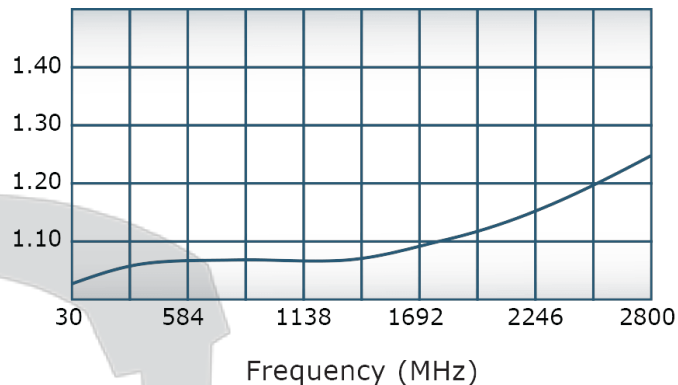
C7800

Performance Data (Specifications subject to change without notice):

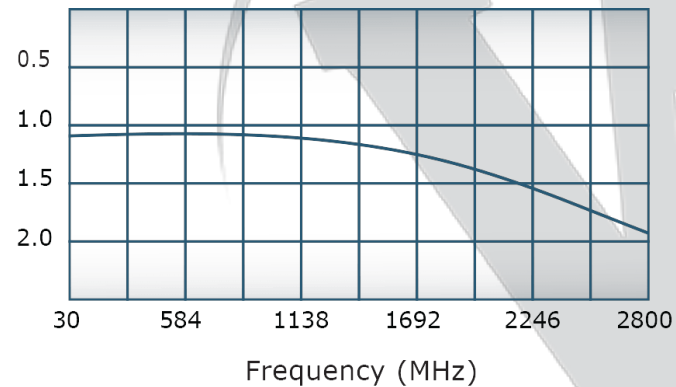
Coupling:



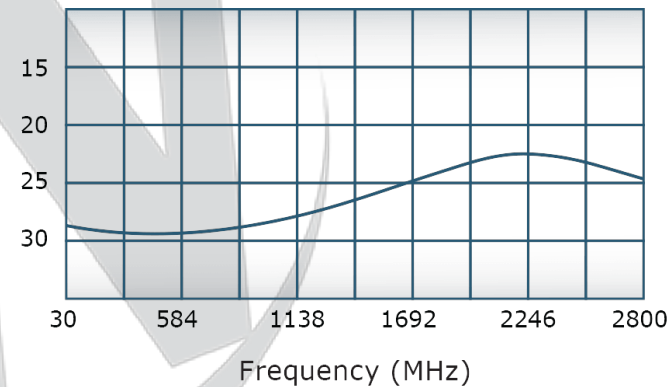
VSWR:



Insertion Loss:




Directivity:



Restriction on use, duplication, or disclosure of proprietary information. This document contains proprietary information which is the sole property of Werlatone, Inc.

Werlatone, Inc. 17 Jon Barrett Road Patterson, NY 12563 T:(845)278-2220 F:(845)278-3440 sales@werlatone.com www.werlatone.com

UNLESS OTHERWISE SPECIFIED INTERPRET DRAWING IN ACCORDANCE WITH MIL-STD-100 DIMENSIONS PER ASME Y14.5-2009 PATENTED/TRADEMARK INFO FOR BEST USE ONLY DIMENSIONS ARE IN INCHES DIMENSIONAL LIMITS APPLY BEFORE FINISHES TOLERANCES: ANGLES ± ° 3 PL ± .005 [13] 3 PL ± .015 [30] REMOVE ALL BURRS AND SHARP EDGES R.01 MAX CONCENTRICITY MAXIMIZED DIA. .002 FIM MACHINE TOOL FINISH .000 MAX		OWN	DATE	 WERLATONE SINCE 1965	17 Jon Barrett Rd Patterson, NY 12563
		SD	6/18/2019		
NEXT ASSY USED ON APPLICATION	THIRD ANGLE PROJECTION	CHK	DATE	TITLE <h1>OUTLINE</h1>	SIZE CAGE CODE DWG NO <h2>10933-500</h2>
		CS	6/18/2019		
		ENGR	DATE	B SCALE <h3>1:1</h3>	REV <h3>B</h3>
		MFR	DATE		
		QA	DATE		
		RLSE	DATE		
				SHEET 1 OF 1	