



PRODUCT DATA SHEET

D5786

Werlatone® Mismatch Tolerant® High Power Broadband RF Combiners and Dividers will operate into High Load VSWR Conditions, for extended periods, without damage. With extensive experience as a supplier to military platforms worldwide **Werlatone®** designs its High Power Broadband Combiners, Power Dividers, and N-Way Combiners for proper operation in the most stringent operating conditions.

Features:

High Power Wide Bandwidths Small Size High Isolation Custom Designs Available

Electrical Specifications:

Frequency: 20 - 100 MHz
Power: 200 W CW
Insertion Loss: 0.25 dB Max.
VSWR: 1.30:1 Max.
Phase Balance: $\pm 5^\circ$ Max.
Amplitude Balance: 0.2 dB Max.
Isolation: 20 dB Min.

Mechanical Specifications:

Type: Connectorized
Material: Aluminum 6061-T6
Surface Finish: Chem. Film Per MIL-DTL-5541F Type I Class 3 (Yellow Iridite) RoHS Compliant Available
Operating Temperature: -55°C to +75°C
Storage Temperature: -60°C to +85°C
Size: 3.0 x 3.0 x 2.25"

Connector Configurations:

Model	Sum Port (J1)	Input/Output (J2)	Input/Output (J3)
D5786-10	N Female	N Female	N Female
D5786-12	N Female	SMA	SMA
D5786-102	SMA	SMA	SMA
D5786-113	BNC	BNC	BNC

When specified, Werlatone® High Power Combiners and RF Dividers will tolerate full input failures on adjacent port(s). This insures that remaining transmitter(s) may continue to operate until the amplifier system can be properly shut down for maintenance. Choose your specific connector configuration from a list of options. Additional connector configurations for our High Power RF Combiners/Dividers, Non-Coherent Combiners, and N-Way Combiners are available upon request.



WERLATONE

Model D5786

Combiners In-Phase Connectorized

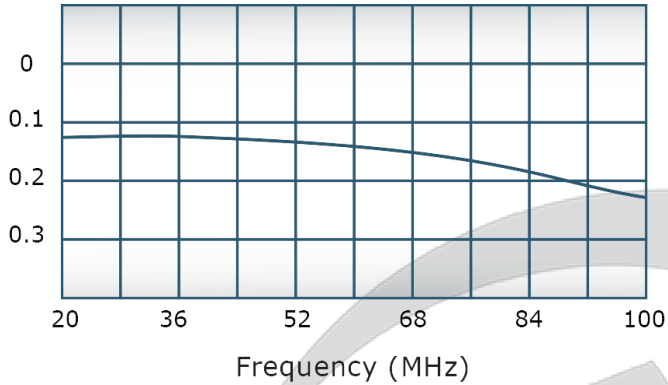


PRODUCT DATA SHEET

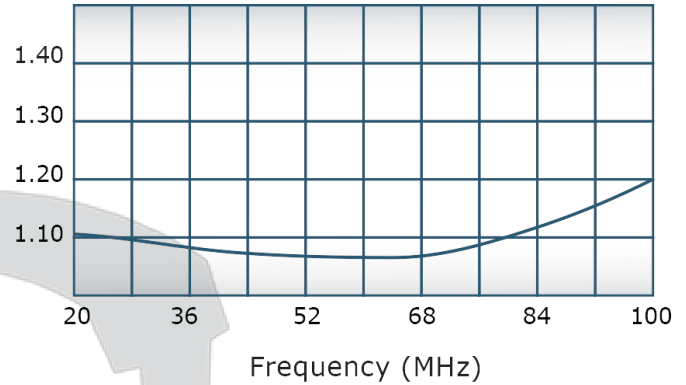
D5786

Performance Data (Specifications subject to change without notice):

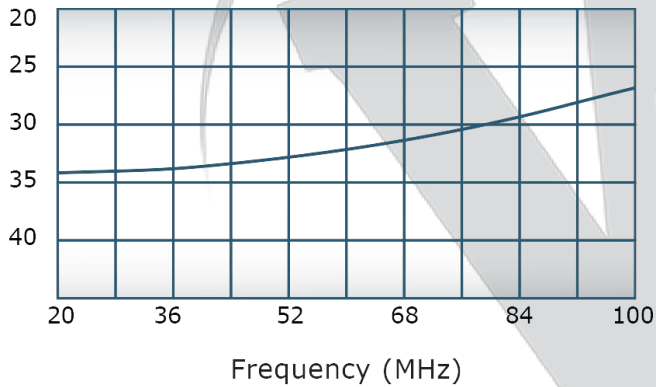
Insertion Loss:



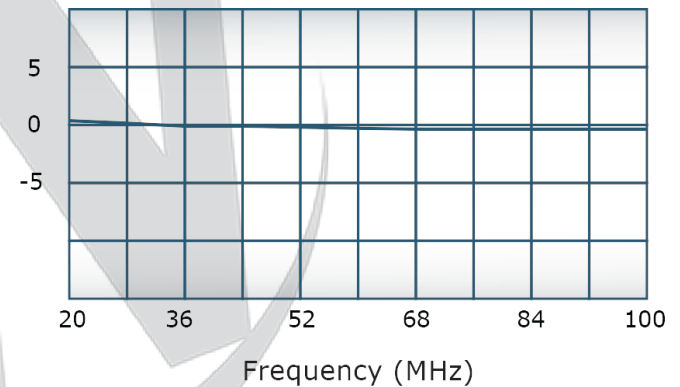
VSWR:



Isolation:



Phase Balance:



Restriction on use, duplication, or disclosure of proprietary information. This document contains proprietary information which is the sole property of Werlatone, Inc.

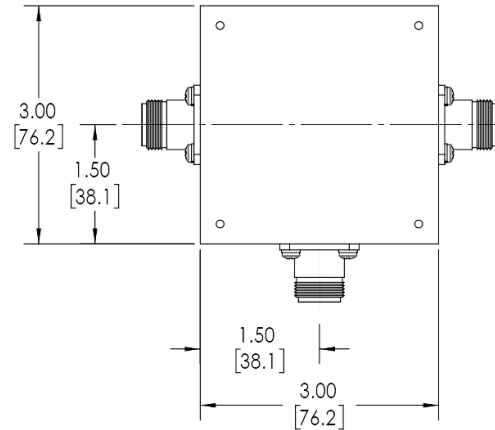
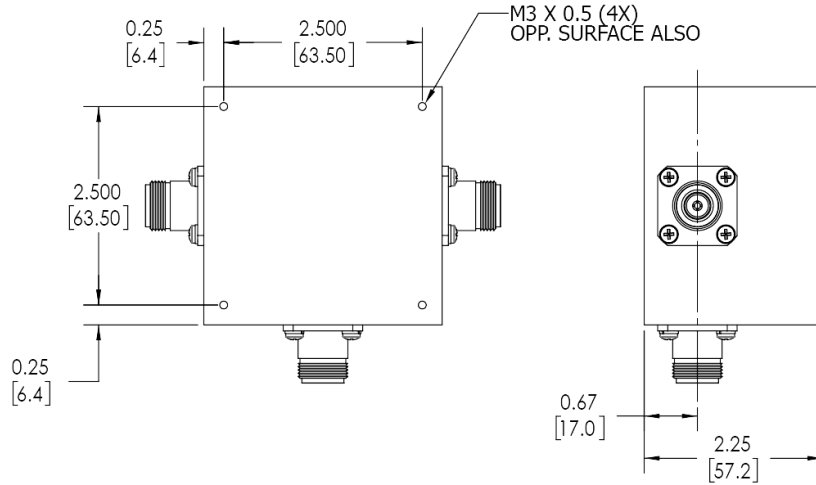
Werlatone, Inc. 17 Jon Barrett Road Patterson, NY 12563 T:(845)278-2220 F:(845)278-3440 sales@werlatone.com www.werlatone.com



RESTRICTION ON USE, DUPLICATION OR DISCLOSURE OF PROPRIETARY INFORMATION
 This document contains proprietary information which is the sole property of Werlatone, Inc.

REVISION HISTORY			
REV.	REVISION RECORD	DATE	APPROVED
A	ECN 1545	9/98	CS
B	ECN 4261	6/18/07	JE
C	ECN 9696	11/25/2019	RB

NOTES: UNLESS OTHERWISE SPECIFIED

- MATERIAL: ALUMINUM 6061-T6**
- FINISH: CHEM FILM PER MIL-DTL-5541F TYPE I CLASS 3 (YELLOW IRIDITE)**
- CONNECTORS: J1-J3: N FEMALE**



		UNLESS OTHERWISE SPECIFIED		OWN	DATE	 WERLATONE SINCE 1965		17 Jon Barrett Rd Patterson, NY 12563	
		INTERPRET DRAWING 1001 MIL-STD-100		SD	11/25/2019				
		DIMENSIONS PER ASME Y14.5M-2009		CHK	DATE				
		PARENTHESES FOR REF ONLY		CS	11/25/2019	TITLE			
		DIMENSIONS ARE IN INCHES		ENGR	DATE	OUTLINE			
		DIMENSIONAL LIMITS APPLY BEFORE FINISHES		INPR	DATE				
		TOLERANCES:		QA	DATE	SIZE CAGE CODE DWG NO		REV	
		ANGLES ± 2°				B 10034-500		C	
		3 PL ± .005 [13]							
		2 PL ± .015 [38]							
		REMOVE ALL BURRS AND SHARP EDGES R.01 MAX							
		CONCENTRICITY MACHINED DIA. .002 FIM							
		MACHINE TOOL MISMATCH .003 FIM							
NEXT ASSY	USED ON			RLSE	DATE	544 1.5		SHEET 1 OF 1	
APPLICATION		THIRD ANGLE PROJECTION							

Restriction on use, duplication, or disclosure of proprietary information. This document contains proprietary information which is the sole property of Werlatone, Inc.
 Werlatone, Inc. 17 Jon Barrett Road Patterson, NY 12563 T:(845)278-2220 F:(845)278-3440 sales@werlatone.com www.werlatone.com