



PRODUCT DATA SHEET

D6129

Werlatone® Mismatch Tolerant® High Power Broadband RF Combiners and Dividers will operate into High Load VSWR Conditions, for extended periods, without damage. With extensive experience as a supplier to military platforms worldwide **Werlatone®** designs its High Power Broadband Combiners, Power Dividers, and N-Way Combiners for proper operation in the most stringent operating conditions.

Features:

High Power Wide Bandwidths Small Size High Isolation Custom Designs Available

Electrical Specifications:

Frequency: 80 - 1000 MHz
Power: 2000 W CW
Insertion Loss: 0.5 dB Max.
VSWR: 1.40:1 Max.
Phase Balance: $\pm 5^\circ$ Max.
Amplitude Balance: 0.3 dB Max.
Isolation: 15 dB Min.

Mechanical Specifications:

Type: Connectorized
Material: Aluminum 6061-T6
Surface Finish: Chem. Film Per MIL-DTL-5541F Type I Class 3 (Yellow Iridite) RoHS Compliant Available
Operating Temperature: -55°C to +75°C
Storage Temperature: -60°C to +85°C
Weight: 12 lbs. 12 oz. (-84)
Size: 10.0 x 11.75 x 2.25"

Connector Configurations:

| Model | Sum Port (J1) | Input/Output (J2) | Input/Output (J3) |
|----------|---------------|-------------------|-------------------|
| D6129-20 | 7/16 Female | N Female | N Female |
| D6129-84 | 1 5/8" EIA | 7/16 Female | 7/16 Female |

When specified, Werlatone® High Power Combiners and RF Dividers will tolerate full input failures on adjacent port(s). This insures that remaining transmitter(s) may continue to operate until the amplifier system can be properly shut down for maintenance. Choose your specific connector configuration from a list of options. Additional connector configurations for our High Power RF Combiners/Dividers, Non-Coherent Combiners, and N-Way Combiners are available upon request.



WERLATONE

Model D6129

Combiners In-Phase Connectorized

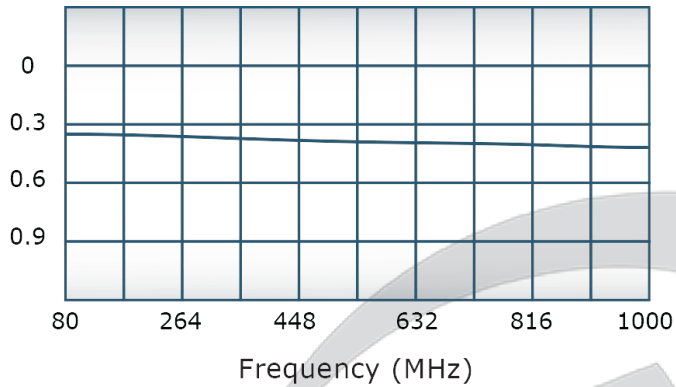


PRODUCT DATA SHEET

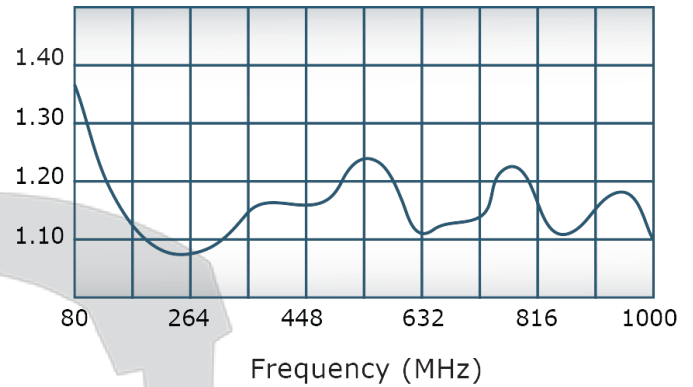
D6129

Performance Data (Specifications subject to change without notice):

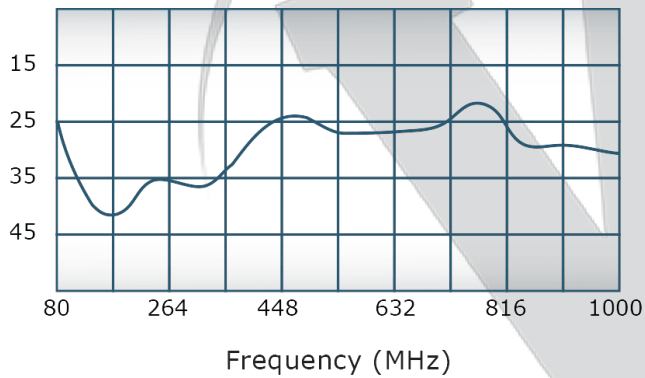
Insertion Loss:



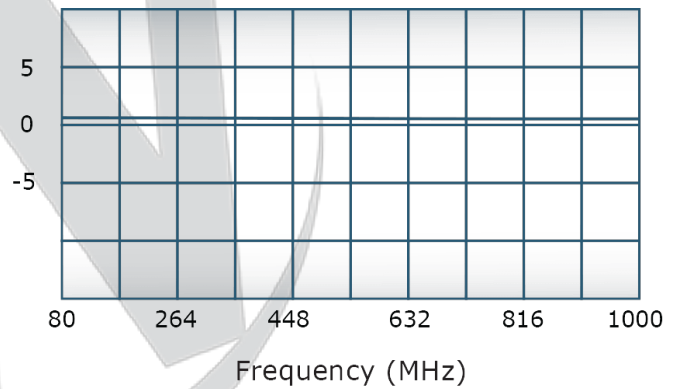
VSWR:



Isolation:



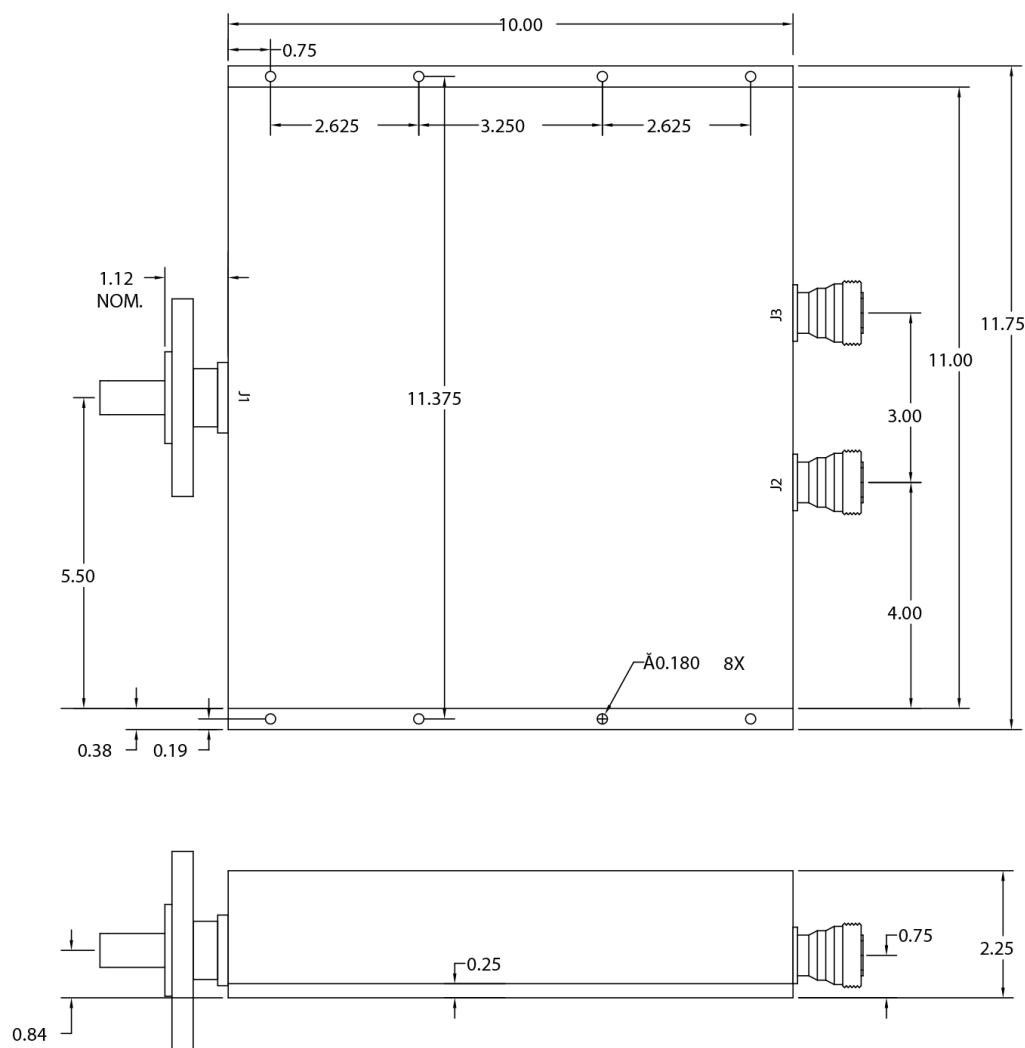
Phase Balance:



Restriction on use, duplication, or disclosure of proprietary information. This document contains proprietary information which is the sole property of Werlatone, Inc.

Werlatone, Inc. 17 Jon Barrett Road Patterson, NY 12563 T:(845)278-2220 F:(845)278-3440 sales@werlatone.com www.werlatone.com

| DATE | SYM | REVISION RECORD | AUTH | DR | CK |
|---------|-------|-----------------|------|----|----|
| 1/27/00 | REV.A | 1710 SV | | | |
| 1/27/00 | REV.B | 1719 SV | | | |
| 2/16/00 | REV.C | 1721 SV | | | |
| 2/16/00 | REV.D | 1723 SV | | | |
| 9/05/03 | REV.E | 3345 CS | | | |



THIS DRAWING CONTAINS INFORMATION
PROPRIETARY TO WERLATONE INC. AND
MAY NOT BE USED OR COPIED WITHOUT
THE WRITTEN CONSENT OF WERLATONE INC.

| | | | | |
|-----------------------------|-------------------------|------------------------------------|--------------|--------------|
| TOLERANCE | WERLATONE INC. | | | |
| XX +/- .015 XXX +/- .005 | SCALE | | DRAWN BY: SV | APPVD BY: CS |
| | TITLE OUTLINE | | | |
| | DATE 1/27/00 | DRAWING NUMBER 10645-500 | | |

Restriction on use, duplication, or disclosure of proprietary information. This document contains proprietary information which is the sole property of Werlatone, Inc.
Werlatone, Inc. 17 Jon Barrett Road Patterson, NY 12563 T:(845)278-2220 F:(845)278-3440 sales@werlatone.com www.werlatone.com