
PRODUCT DATA SHEET
D9922

Werlatone® Mismatch Tolerant® High Power Broadband RF Combiners and Dividers will operate into High Load VSWR Conditions, for extended periods, without damage. With extensive experience as a supplier to military platforms worldwide **Werlatone®** designs its High Power Broadband Combiners, Power Dividers, and N-Way Combiners for proper operation in the most stringent operating conditions.

Features:

High Power Wide Bandwidths Small Size High Isolation Custom Designs Available

Electrical Specifications:

Frequency: 2000 - 6000 MHz
Power: 200 W CW
Insertion Loss: 0.35 dB Max.
VSWR: 1.40:1 Max.
Phase Balance: $\pm 5^\circ$ Max.
Amplitude Balance: 0.25 dB Max.
Isolation: 15 dB Min.

Mechanical Specifications:

Type: Non-Connectorized
Material: Aluminum 6061-T6
Surface Finish: Immersion Silver (RoHS Compliant Available)
Operating Temperature: -55°C to +75°C
Storage Temperature: -60°C to +85°C
Weight: 0.288 oz.
Size: 1.4 x 1.1 x 0.14"

Port Configurations:

Model	J1	J2/J3	J4/J5
D9922-Ag	Sum Port	Input Ports	Termination Ports

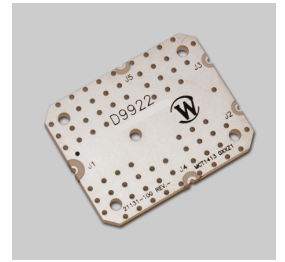
When specified, Werlatone® High Power Combiners and RF Dividers will tolerate full input failures on adjacent port(s). This insures that remaining transmitter(s) may continue to operate until the amplifier system can be properly shut down for maintenance. Choose your specific connector configuration from a list of options. Additional connector configurations for our High Power RF Combiners/Dividers, Non-Coherent Combiners, and N-Way Combiners are available upon request.



WERLATONE

Model D9922

Combiners In-Phase Non-Connectorized

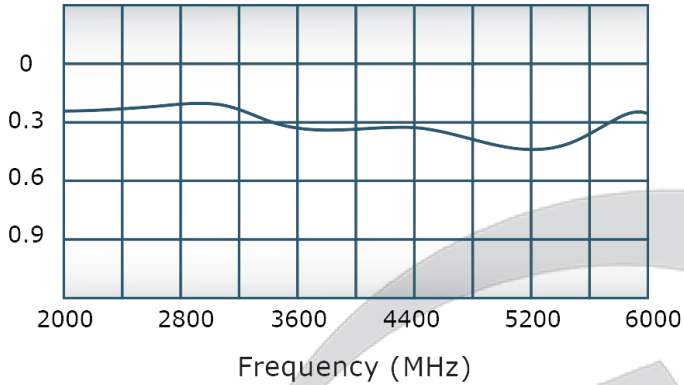


PRODUCT DATA SHEET

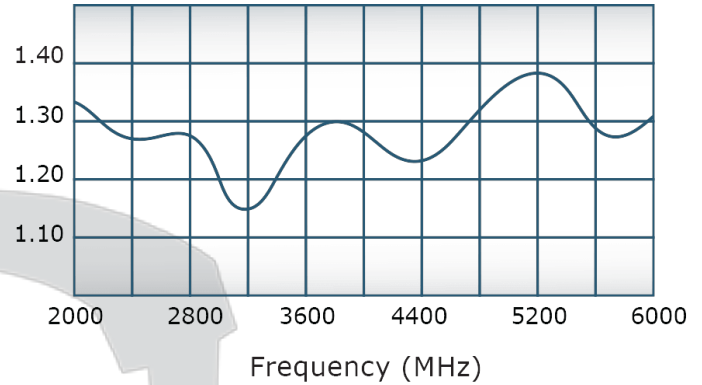
D9922

Performance Data (Specifications subject to change without notice):

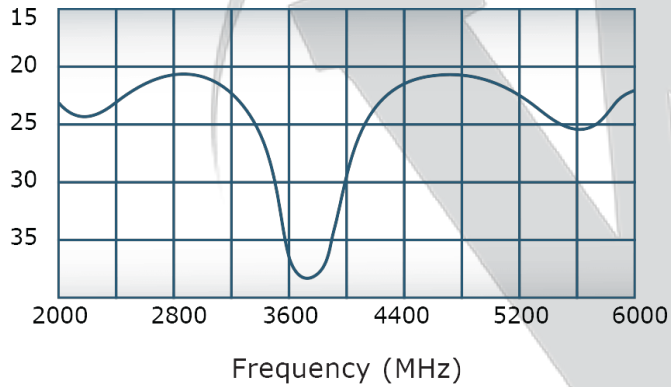
Insertion Loss:



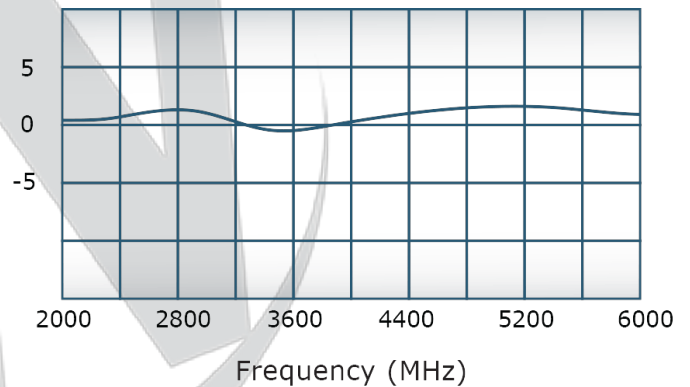
VSWR:



Isolation:



Directivity:

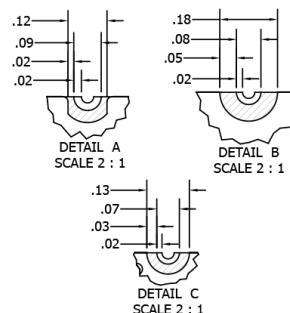
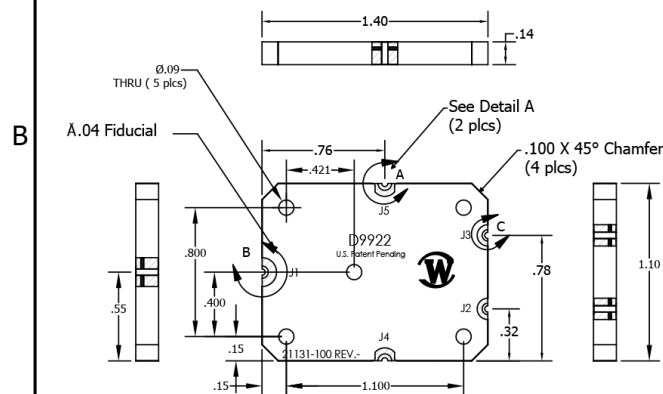


Restriction on use, duplication, or disclosure of proprietary information. This document contains proprietary information which is the sole property of Werlatone, Inc.

Werlatone, Inc. 17 Jon Barrett Road Patterson, NY 12563 T:(845)278-2220 F:(845)278-3440 sales@werlatone.com www.werlatone.com

RESTRICTION ON USE, DUPLICATION OR DISCLOSURE OF PROPRIETARY INFORMATION
 This document contains proprietary information
 which is the sole property of Werlatone, Inc.

REVISION HISTORY			
REV	REVISION RECORD	DATE	APPROVED
-	Initial Rls	1/27/2014	BW
A	ECN 9145	8/16/2016	CS



		UNLESS OTHERWISE SPECIFIED		DWN	DATE	<div><div>W</div><div>WERLATONE SINCE 1965</div></div>		17 Jon Barrett Rd Patterson, NY 12563	
		<ul style="list-style-type: none">• INTERPRET DRAWING IAW MIL-STD-100• DIMENSIONING PER ASME Y14.5M-2009• PARENTHESES INFO FOR REF ONLY• DIMENSIONS ARE IN INCHES• DIMENSIONAL LIMITS APPLY BEFORE PROCESSES• TOLERANCES: ANGLES ± 2° 3 PL ± .005 2 PL ± .015		NH	01/27/14	<div><div>W</div><div>WERLATONE SINCE 1965</div></div> <div>TITLE</div> <div>Outline</div> <div>SIZE CAGE CODE DWG NO</div> <div>A 28812 21131-500</div> <div>SCALE 1:1</div> <div>SHEET 1 OF 1</div>			
				CHK	DATE				
				BW	01/27/14				
				ENGR	DATE				
				BW	01/27/14				
				MFGR	DATE				
				QA	DATE				
				RLSE	DATE				
21222-100									
NEXT ASSY		USED ON							
APPLICATION		THIRD ANGLE PROJECTION							