

PRODUCT DATA SHEET

D5575

Werlatone® Mismatch Tolerant® High Power Broadband RF Combiners and Dividers will operate into High Load VSWR Conditions, for extended periods, without damage. With extensive experience as a supplier to military platforms worldwide **Werlatone®** designs its High Power Broadband Combiners, Power Dividers, and N-Way Combiners for proper operation in the most stringent operating conditions.

Features:

High Power Wide Bandwidths Small Size High Isolation Custom Designs Available

Electrical Specifications:

Frequency: 20 - 500 MHz
Power: 1000 W CW
Insertion Loss: 0.7 dB Max.
VSWR: 1.40:1 Max.
Phase Balance: $\pm 5^\circ$ Max.
Amplitude Balance: 0.3 dB Max.
Isolation: 18 dB Min.

Mechanical Specifications:

Type: Connectorized
Material: Aluminum 6061-T6
Surface Finish: Chem. Film Per MIL-DTL-5541F Type I Class 3 (Yellow Iridite) RoHS Compliant Available
Operating Temperature: -55°C to +75°C
Storage Temperature: -60°C to +85°C
Weight: 5 lbs.
Size: 7.0 x 7.5 x 2.25"

Connector Configurations:

Model	Sum Port (J5)	Input/Output (J1-J4)
D5575-10	N Female	N Female
D5575-12	N Female	SMA Female
D5575-13	N Female	BNC Female
D5575-20	7/16 Female	N Female
D5575-41	SC Female	N Female

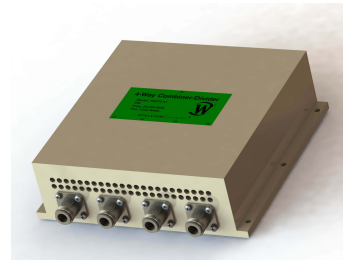
When specified, Werlatone® High Power Combiners and RF Dividers will tolerate full input failures on adjacent port(s). This insures that remaining transmitter(s) may continue to operate until the amplifier system can be properly shut down for maintenance. Choose your specific connector configuration from a list of options. Additional connector configurations for our High Power RF Combiners/Dividers, Non-Coherent Combiners, and N-Way Combiners are available upon request.



WERLATONE

Model D5575

Combiners In-Phase Connectorized

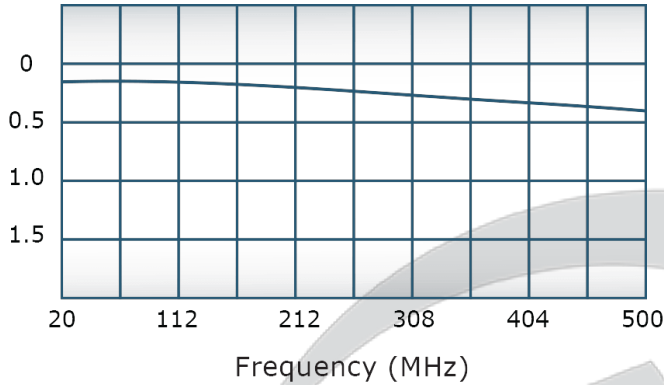


PRODUCT DATA SHEET

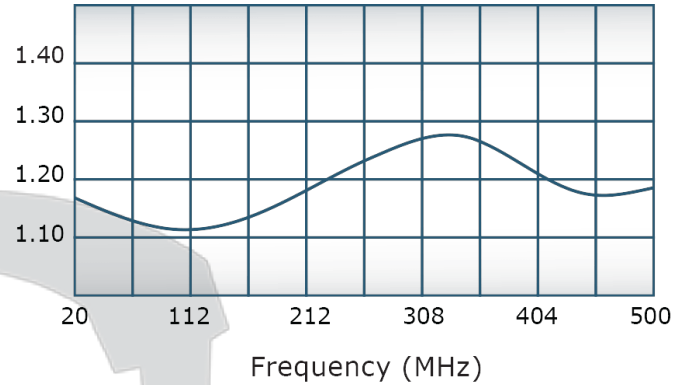
D5575

Performance Data (Specifications subject to change without notice):

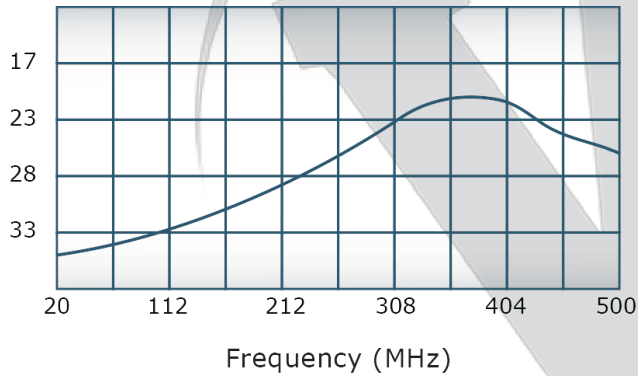
Insertion Loss:



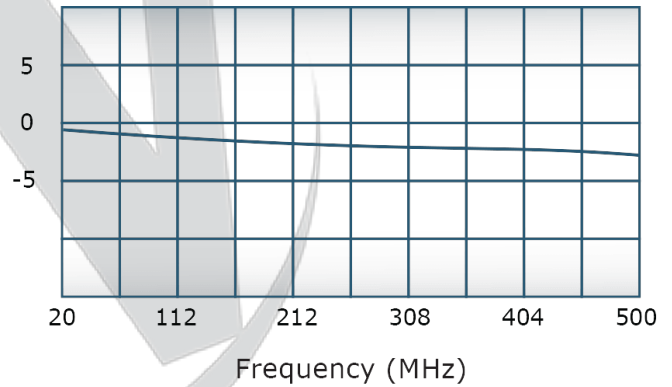
VSWR:



Isolation:



Phase Balance:



Restriction on use, duplication, or disclosure of proprietary information. This document contains proprietary information which is the sole property of Werlatone, Inc.

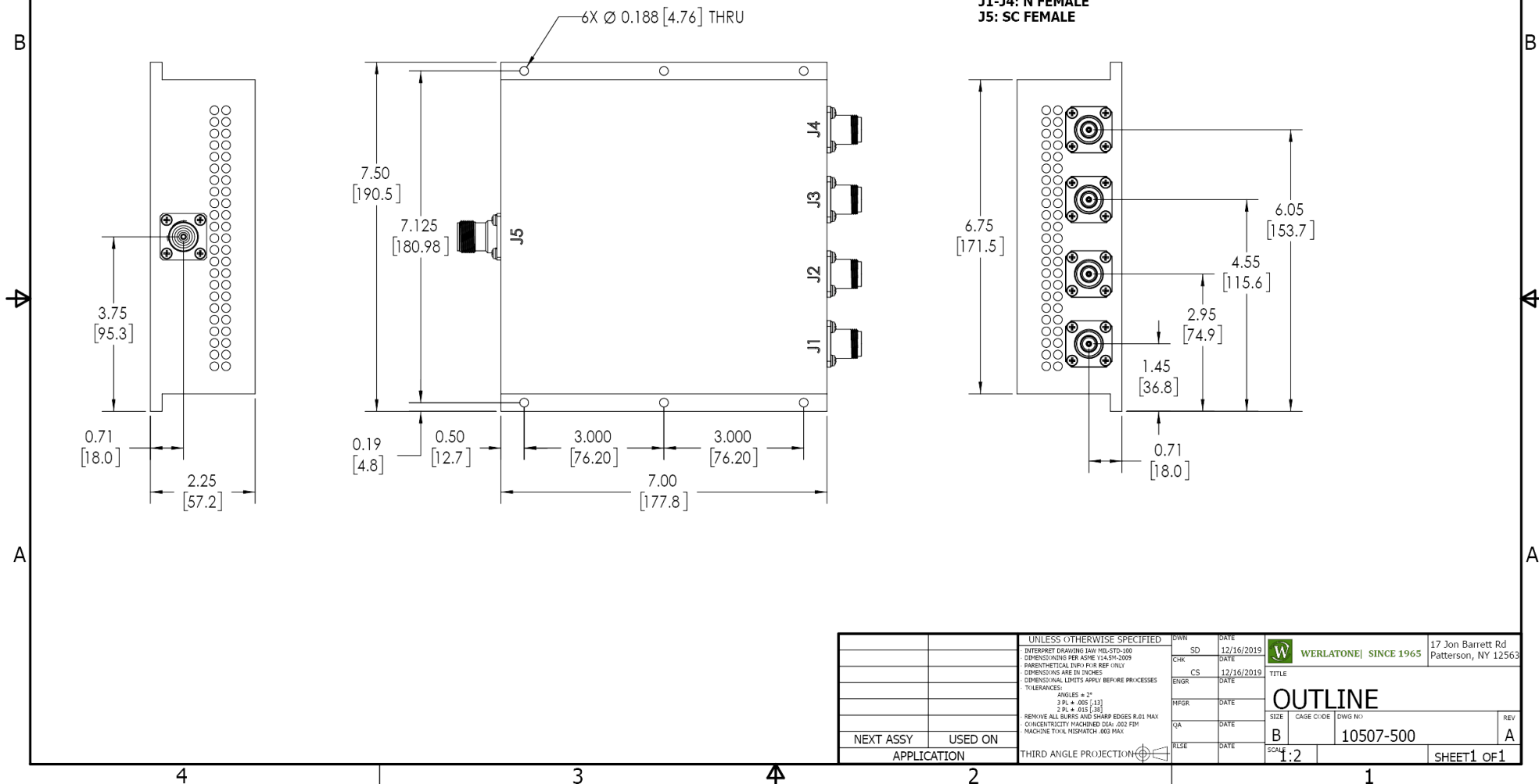
Werlatone, Inc. 17 Jon Barrett Road Patterson, NY 12563 T:(845)278-2220 F:(845)278-3440 sales@werlatone.com www.werlatone.com

RESTRICTION ON USE, DUPLICATION OR DISCLOSURE OF PROPRIETARY INFORMATION
This document contains proprietary information which is the sole property of Werlatone, Inc.

REVISION HISTORY			
REV.	REVISION RECORD	DATE	APPROVED
A	ECN 9696	12/16/2019	RB

NOTES: UNLESS OTHERWISE SPECIFIED

- 1. MATERIAL: ALUMINUM 6061-T6**
- 2. FINISH: CHEM FILM PER MIL-DTL-5541F TYPE II CLASS 3 (YELLOW IRIDITE)**
- 3. CONNECTORS:
J1-J4: N FEMALE
J5: SC FEMALE**



UNLESS OTHERWISE SPECIFIED		SD	DATE	17 Jon Barrett Rd Patterson, NY 12563
INTERPRET DRAWING IN ACCORDANCE WITH MIL-STD-100		CHK	DATE	
DIMENSIONS PER ASME Y14.5M-2009		CS	DATE	TITLE
PARENTHESES FOR REF ONLY		ENGR	DATE	
DIMENSIONS ARE IN INCHES		INFR	DATE	SIZE
DIMENSIONAL LIMITS APPLY BEFORE FINISHES		QA	DATE	
TOLERANCES:		RLSE	DATE	CAGE CODE
ANGLES ± 2°				
3 PL ± .005 [13]				DWG NO.
2 PL ± .015 [38]				
REMOVE ALL BURRS AND SHARP EDGES R.01 MAX				REV
CONCENTRICITY MACHINED DIA. .002 FIM				
MACHINE TOOL MISMATCH .003 FIM				
NEXT ASSY	USED ON	THIRD ANGLE PROJECTION		
APPLICATION		SCALE		
		1:2		

Restriction on use, duplication, or disclosure of proprietary information. This document contains proprietary information which is the sole property of Werlatone, Inc.
Werlatone, Inc. 17 Jon Barrett Road Patterson, NY 12563 T:(845)278-2220 F:(845)278-3440 sales@werlatone.com www.werlatone.com