



## PRODUCT DATA SHEET

D5074

**Werlatone® Mismatch Tolerant®** High Power Broadband RF Combiners and Dividers will operate into High Load VSWR Conditions, for extended periods, without damage. With extensive experience as a supplier to military platforms worldwide **Werlatone®** designs its High Power Broadband Combiners, Power Dividers, and N-Way Combiners for proper operation in the most stringent operating conditions.

### Features:

High Power      Wide Bandwidths      Small Size      High Isolation      Custom Designs Available

### Electrical Specifications:

Frequency: 800 - 1000 MHz  
Power: 100 W CW  
Insertion Loss: 0.35 dB Max.  
VSWR: 1.50:1 Max.  
Phase Balance:  $\pm 5^\circ$  Max.  
Amplitude Balance: 0.3 dB Max.  
Isolation: 18 dB Min.

### Mechanical Specifications:

Type: Connectorized  
Material: Aluminum 6061-T6  
Surface Finish: Chem. Film Per MIL-DTL-5541F Type I Class 3 (Yellow Iridite) RoHS Compliant Available  
Operating Temperature: -55°C to +75°C  
Storage Temperature: -60°C to +85°C  
Weight: 1.5 lbs.  
Size: 3.0 x 6.0 x 1.6"

### Connector Configurations:

Model	Sum Port (J5)	Input/Output (J1-J4)
D5074-10	N Female	N Female
D5074-12	N Female	SMA

**When specified, Werlatone® High Power Combiners and RF Dividers** will tolerate full input failures on adjacent port(s). This insures that remaining transmitter(s) may continue to operate until the amplifier system can be properly shut down for maintenance. Choose your specific connector configuration from a list of options. Additional connector configurations for our High Power RF Combiners/Dividers, Non-Coherent Combiners, and N-Way Combiners are available upon request.



# WERLATONE

Model D5074

Combiners In-Phase Connectorized

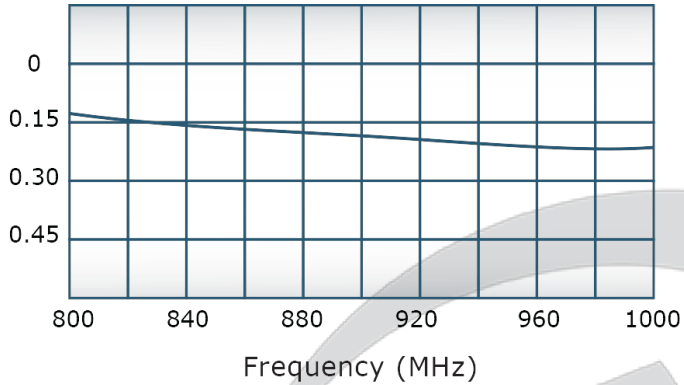


## PRODUCT DATA SHEET

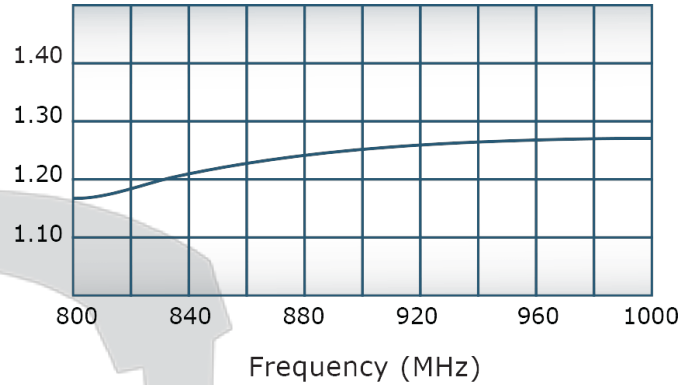
D5074

### Performance Data (Specifications subject to change without notice):

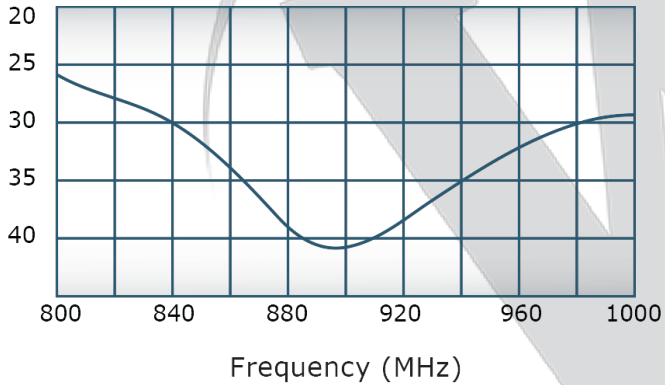
Insertion Loss:



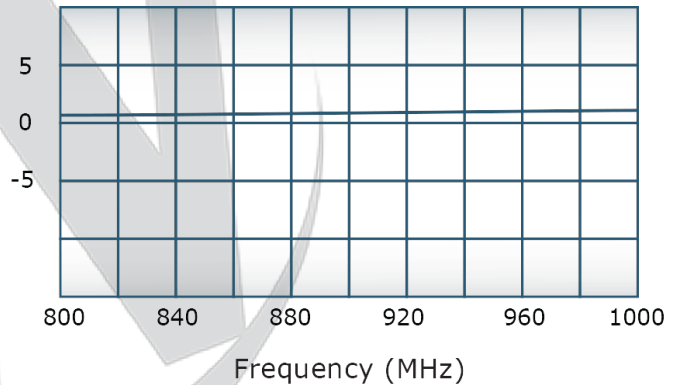
VSWR:



Isolation:

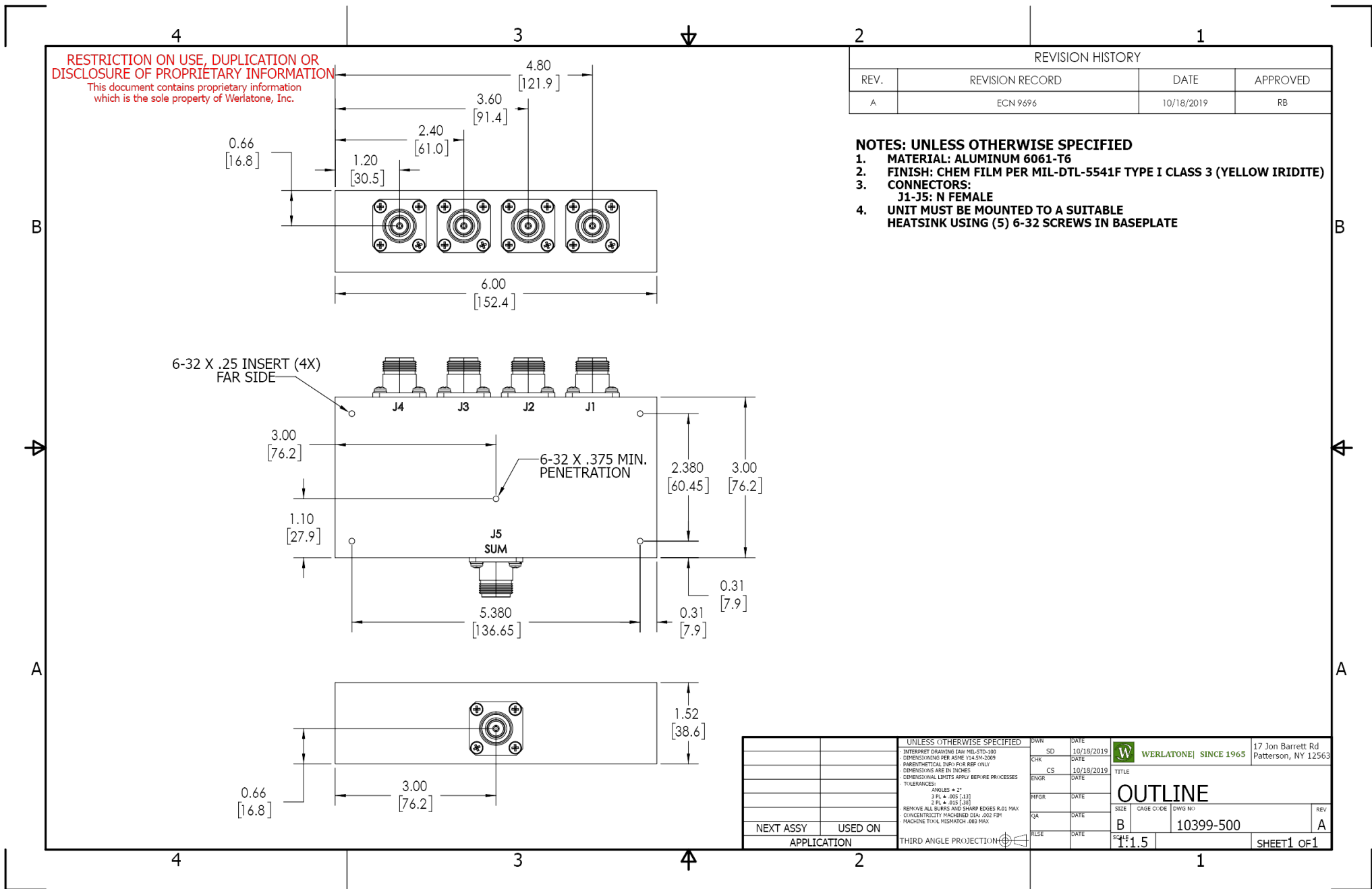


Phase Balance:



**Restriction on use, duplication, or disclosure of proprietary information.** This document contains proprietary information which is the sole property of Werlatone, Inc.

Werlatone, Inc. 17 Jon Barrett Road Patterson, NY 12563 T:(845)278-2220 F:(845)278-3440 sales@werlatone.com www.werlatone.com



**REVISION HISTORY**

REV.	REVISION RECORD	DATE	APPROVED
A	ECN 9696	10/18/2019	RB

**NOTES: UNLESS OTHERWISE SPECIFIED**

- MATERIAL: ALUMINUM 6061-T6**
- FINISH: CHEM FILM PER MIL-DTL-5541F TYPE I CLASS 3 (YELLOW IRIDITE)**
- CONNECTORS: J1-J5: N FEMALE**
- UNIT MUST BE MOUNTED TO A SUITABLE HEATSINK USING (5) 6-32 SCREWS IN BASEPLATE**

**UNLESS OTHERWISE SPECIFIED**

INTERPRET DRAWING IN ACCORDANCE WITH MIL-STD-100  
 DIMENSIONS PER ASME Y14.5M-2009  
 PARENTHESES FOR FIRST REFERENCE ONLY  
 DIMENSIONS ARE IN INCHES  
 DIMENSIONAL LIMITS APPLY BEFORE FINISHES  
 TOLERANCES:  
 ANGLES ± 2°  
 3 PL ± .005 [13]  
 2 PL ± .015 [38]  
 REMOVE ALL BURRS AND SHARP EDGES R.01 MAX  
 CONCENTRICITY MACHINED DIA. .002 FIM  
 MACHINE TOOL MISMATCH .003 FIM

THIRD ANGLE PROJECTION

OWN	DATE	SD	DATE	CHK	DATE	ENGR	DATE	INPR	DATE	QA	DATE	RLSE	DATE
	10/18/2019												

**OUTLINE**

SIZE: B CAGE CODE: 10399-500 DWG NO: 10399-500 REV: A

SCALE: 1:1.5 SHEET 1 OF 1

Restriction on use, duplication, or disclosure of proprietary information. This document contains proprietary information which is the sole property of Werlatone, Inc.  
 Werlatone, Inc. 17 Jon Barrett Road Patterson, NY 12563 T:(845)278-2220 F:(845)278-3440 sales@werlatone.com www.werlatone.com