

PRODUCT DATA SHEET

D5809

Werlatone® Mismatch Tolerant® High Power Broadband RF Combiners and Dividers will operate into High Load VSWR Conditions, for extended periods, without damage. With extensive experience as a supplier to military platforms worldwide **Werlatone®** designs its High Power Broadband Combiners, Power Dividers, and N-Way Combiners for proper operation in the most stringent operating conditions.

Features:

High Power Wide Bandwidths Small Size High Isolation Custom Designs Available

Electrical Specifications:

Frequency: 225 - 400 MHz
Power: 400 W CW
Insertion Loss: 0.4 dB Max.
VSWR: 1.30:1 Max.
Phase Balance: $\pm 5^\circ$ Max.
Amplitude Balance: 0.2 dB Max.
Isolation: 25 dB Min.

Mechanical Specifications:

Type: Connectorized
Material: Aluminum 6061-T6
Surface Finish: Chem. Film Per MIL-DTL-5541F Type I Class 3 (Yellow Iridite) RoHS Compliant Available
Operating Temperature: -55°C to +75°C
Storage Temperature: -60°C to +85°C
Weight: 5.75 lbs.
Size: 7.0 x 7.5 x 2.25"

Connector Configurations:

Model	Sum Port (J5)	Input/Output (J1-J4)
D5809-10	N Female	N Female
D5980-41	SC Female	N Female

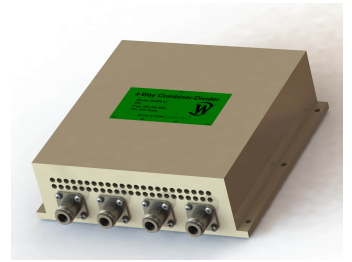
When specified, Werlatone® High Power Combiners and RF Dividers will tolerate full input failures on adjacent port(s). This insures that remaining transmitter(s) may continue to operate until the amplifier system can be properly shut down for maintenance. Choose your specific connector configuration from a list of options. Additional connector configurations for our High Power RF Combiners/Dividers, Non-Coherent Combiners, and N-Way Combiners are available upon request.



WERLATONE

Model D5809

Combiners In-Phase Connectorized

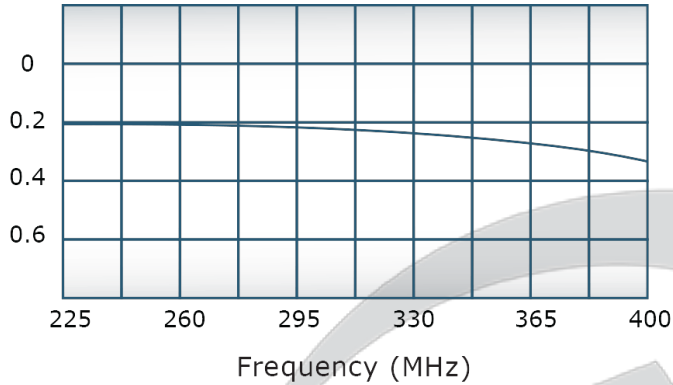


PRODUCT DATA SHEET

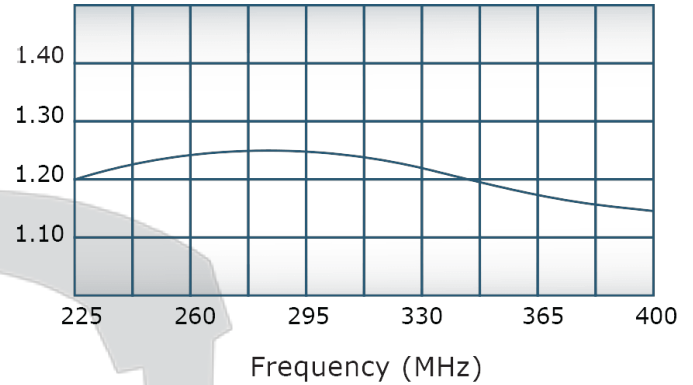
D5809

Performance Data (Specifications subject to change without notice):

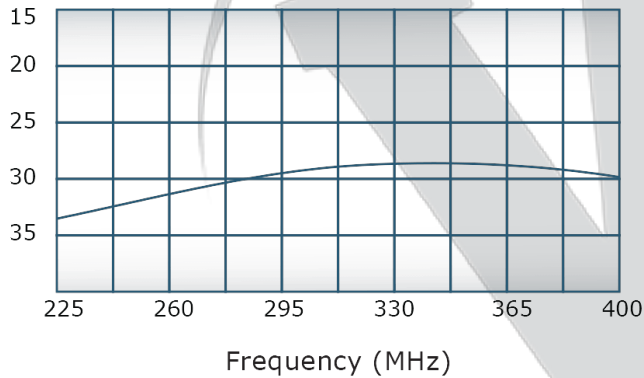
Insertion Loss:



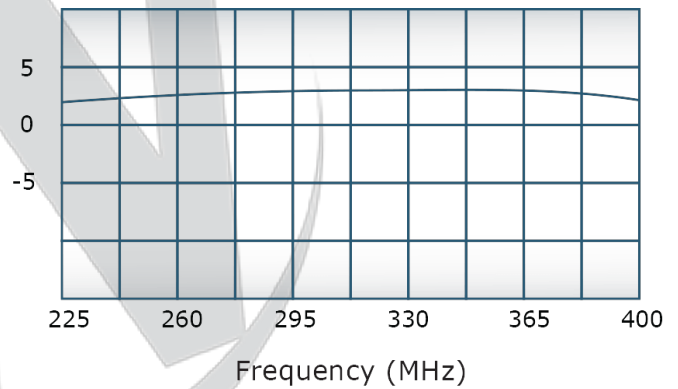
VSWR:



Isolation:



Phase Balance:



Restriction on use, duplication, or disclosure of proprietary information. This document contains proprietary information which is the sole property of Werlatone, Inc.

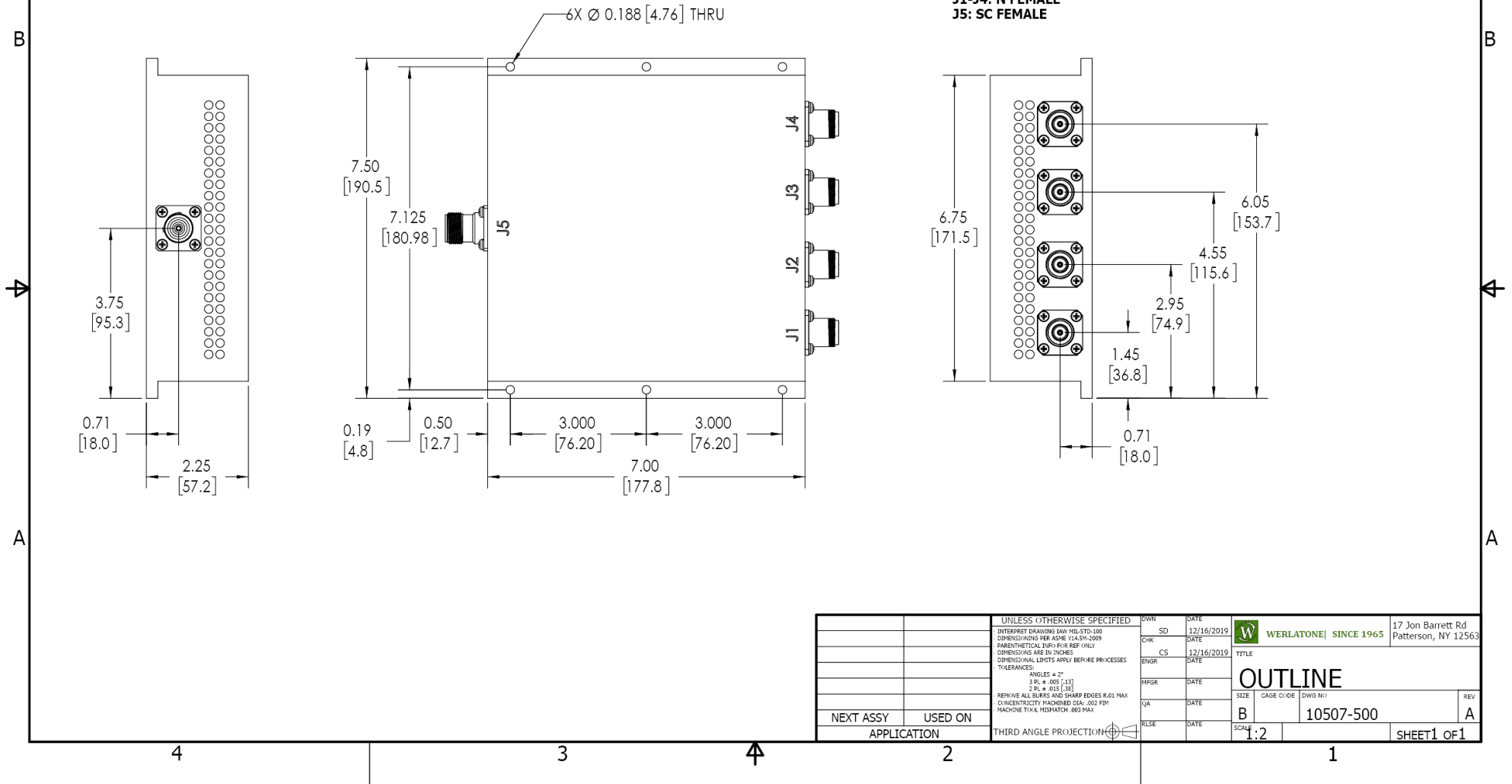
Werlatone, Inc. 17 Jon Barrett Road Patterson, NY 12563 T:(845)278-2220 F:(845)278-3440 sales@werlatone.com www.werlatone.com



RESTRICTION ON USE, DUPLICATION OR DISCLOSURE OF PROPRIETARY INFORMATION
 This document contains proprietary information which is the sole property of Werlatone, Inc.

REVISION HISTORY			
REV.	REVISION RECORD	DATE	APPROVED
A	ECN 9696	12/16/2019	RB

NOTES: UNLESS OTHERWISE SPECIFIED

- MATERIAL: ALUMINUM 6061-T6**
- FINISH: CHEM FILM PER MIL-DTL-5541F TYPE II CLASS 3 (YELLOW IRIDITE)**
- CONNECTORS:**
J1-J4: N FEMALE
J5: SC FEMALE



<div>UNLESS OTHERWISE SPECIFIED</div> <div>INTERPRET DRAWING IN ACCORDANCE WITH MIL-STD-100</div> <div>DIMENSIONS PER ASME Y14.5M-2009</div> <div>PARENTHESES FOR REFERENCE ONLY</div> <div>DIMENSIONS ARE IN INCHES</div> <div>DIMENSIONAL LIMITS APPLY BEFORE FINISHES</div> <div>TOLERANCES:</div> <div>ANGLES ± 2°</div> <div>3 PL ± .005 [13]</div> <div>2 PL ± .015 [38]</div> <div>REMOVE ALL BURRS AND SHARP EDGES R.01 MAX</div> <div>CONCENTRICITY MACHINED DIA. .002 FIM</div> <div>MACHINE TOOL MISMATCH .003 FIM</div>		DOWN	DATE	<div><div></div><div>WERLATONE SINCE 1965</div></div> <div>17 Jon Barrett Rd Patterson, NY 12563</div>					
		SD	12/16/2019						
		CHK	DATE						
		CS	12/16/2019						
		ENGR	TITLE						
		INPR	DATE						
		QA	DATE						
NEXT ASSY		RLSE	DATE	<div><div>SIZE</div><div>CAGE CODE</div><div>DWG NO</div></div> <div>10507-500</div>		REV	A		
APPLICATION		THIRD ANGLE PROJECTION 			SCALE		1:2	SHEET1 OF1	

Restriction on use, duplication, or disclosure of proprietary information. This document contains proprietary information which is the sole property of Werlatone, Inc.
 Werlatone, Inc. 17 Jon Barrett Road Patterson, NY 12563 T:(845)278-2220 F:(845)278-3440 sales@werlatone.com www.werlatone.com