



PRODUCT DATA SHEET

D9440

Werlatone® Mismatch Tolerant® High Power Broadband RF Combiners and Dividers will operate into High Load VSWR Conditions, for extended periods, without damage. With extensive experience as a supplier to military platforms worldwide **Werlatone®** designs its High Power Broadband Combiners, Power Dividers, and N-Way Combiners for proper operation in the most stringent operating conditions.

Features:

High Power Wide Bandwidths Small Size High Isolation Custom Designs Available

Electrical Specifications:

Frequency: 80 - 1000 MHz
Power: 1000 W CW
Insertion Loss: 0.65 dB Max.
VSWR: 1.35:1 Max.
Phase Balance: $\pm 5^\circ$ Max.
Amplitude Balance: 0.3 dB Max.
Isolation: 15 dB Min.

Mechanical Specifications:

Type: Connectorized
Material: Aluminum 6061-T6
Surface Finish: Chem. Film Per MIL-DTL-5541F Type I Class 3 (Yellow Iridite) RoHS Compliant Available
Operating Temperature: -55°C to +75°C
Storage Temperature: -60°C to +85°C
Weight: 3 lbs. 12 oz.
Size: 5.7 x 4.7 x 1.75"

Connector Configurations:

Model	Sum Port (J1)	Input/Output (J2-J5)
D9440-10	N Female	N Female
D9440-12	N Female	SMA
D9440-20	7/16 Female	N Female
D9440-22	7/16 Female	SMA
D9440-41	SC Female	N Female

When specified, Werlatone® High Power Combiners and RF Dividers will tolerate full input failures on adjacent port(s). This insures that remaining transmitter(s) may continue to operate until the amplifier system can be properly shut down for maintenance. Choose your specific connector configuration from a list of options. Additional connector configurations for our High Power RF Combiners/Dividers, Non-Coherent Combiners, and N-Way Combiners are available upon request.



WERLATONE

Model D9440

Combiners In-Phase Connectorized

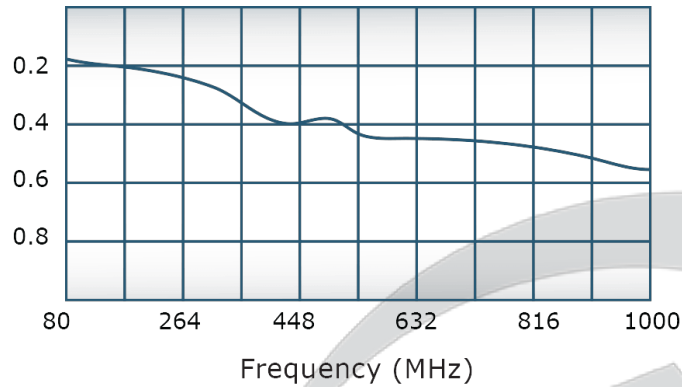


PRODUCT DATA SHEET

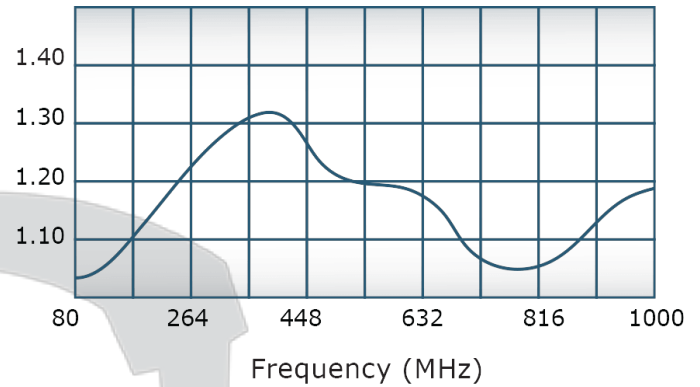
D9440

Performance Data (Specifications subject to change without notice):

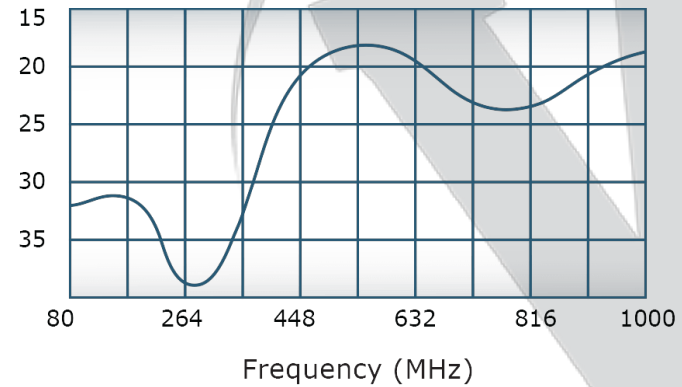
Insertion Loss:



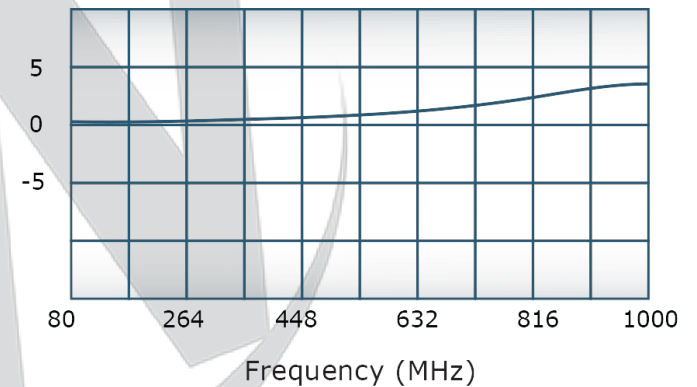
VSWR:



Isolation:



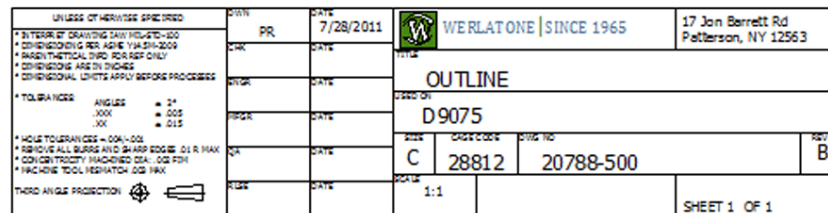
Phase Balance:



Restriction on use, duplication, or disclosure of proprietary information. This document contains proprietary information which is the sole property of Werlatone, Inc.

Werlatone, Inc. 17 Jon Barrett Road Patterson, NY 12563 T:(845)278-2220 F:(845)278-3440 sales@werlatone.com www.werlatone.com

REVISION HISTORY					
DATE	REV	REVISION RECORD	AUTH	CHK	APPV
7/28/11	-	INITIAL RELEASE	PR		
5/28/13	A	8196	PR		
12/14/18	B	9718	PK		



•