



PRODUCT DATA SHEET

D5816

Werlatone® Mismatch Tolerant® High Power Broadband RF Combiners and Dividers will operate into High Load VSWR Conditions, for extended periods, without damage. With extensive experience as a supplier to military platforms worldwide **Werlatone®** designs its High Power Broadband Combiners, Power Dividers, and N-Way Combiners for proper operation in the most stringent operating conditions.

Features:

High Power Wide Bandwidths Small Size High Isolation Custom Designs Available

Electrical Specifications:

Frequency: 20 - 500 MHz
Power: 200 W CW
Insertion Loss: 0.5 dB Max.
VSWR: 1.35:1 Max.
Phase Balance: $\pm 5^\circ$ Max.
Amplitude Balance: 0.25 dB Max.
Isolation: 20 dB Min.

Mechanical Specifications:

Type: Connectorized
Material: Aluminum 6061-T6
Surface Finish: Chem. Film Per MIL-DTL-5541F Type I Class 3 (Yellow Iridite) RoHS Compliant Available
Operating Temperature: -55°C to +75°C
Storage Temperature: -60°C to +85°C
Weight: 2.5 lbs.
Size: 5.0 x 5.1 x 1.5"

Connector Configurations:

Model	Sum Port (J5)	Input/Output (J1-J4)
D5816-10	N Female	N Female
D5816-12	N Female	SMA Female
D5816-13	N Female	BNC Female
D5816-102	SMA	SMA

When specified, Werlatone® High Power Combiners and RF Dividers will tolerate full input failures on adjacent port(s). This insures that remaining transmitter(s) may continue to operate until the amplifier system can be properly shut down for maintenance. Choose your specific connector configuration from a list of options. Additional connector configurations for our High Power RF Combiners/Dividers, Non-Coherent Combiners, and N-Way Combiners are available upon request.



WERLATONE

Model D5816

Combiners In-Phase Connectorized

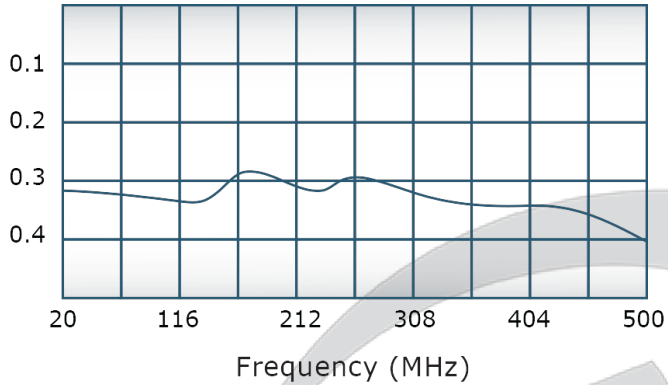


PRODUCT DATA SHEET

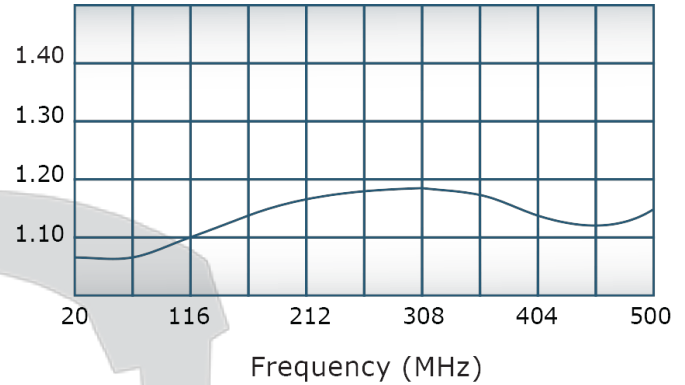
D5816

Performance Data (Specifications subject to change without notice):

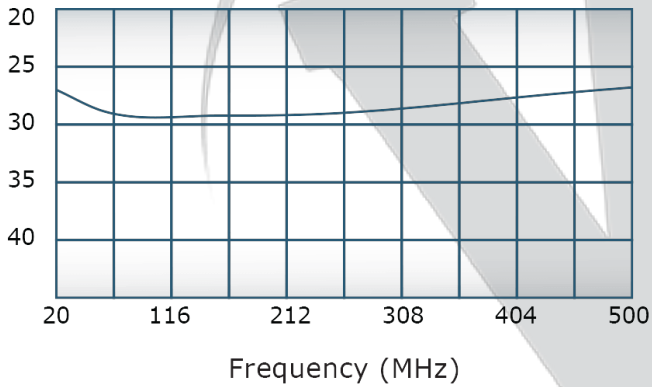
Insertion Loss:



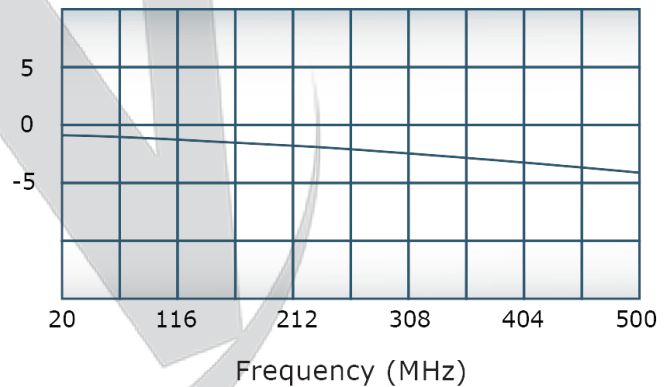
VSWR:



Isolation:



Phase Balance:

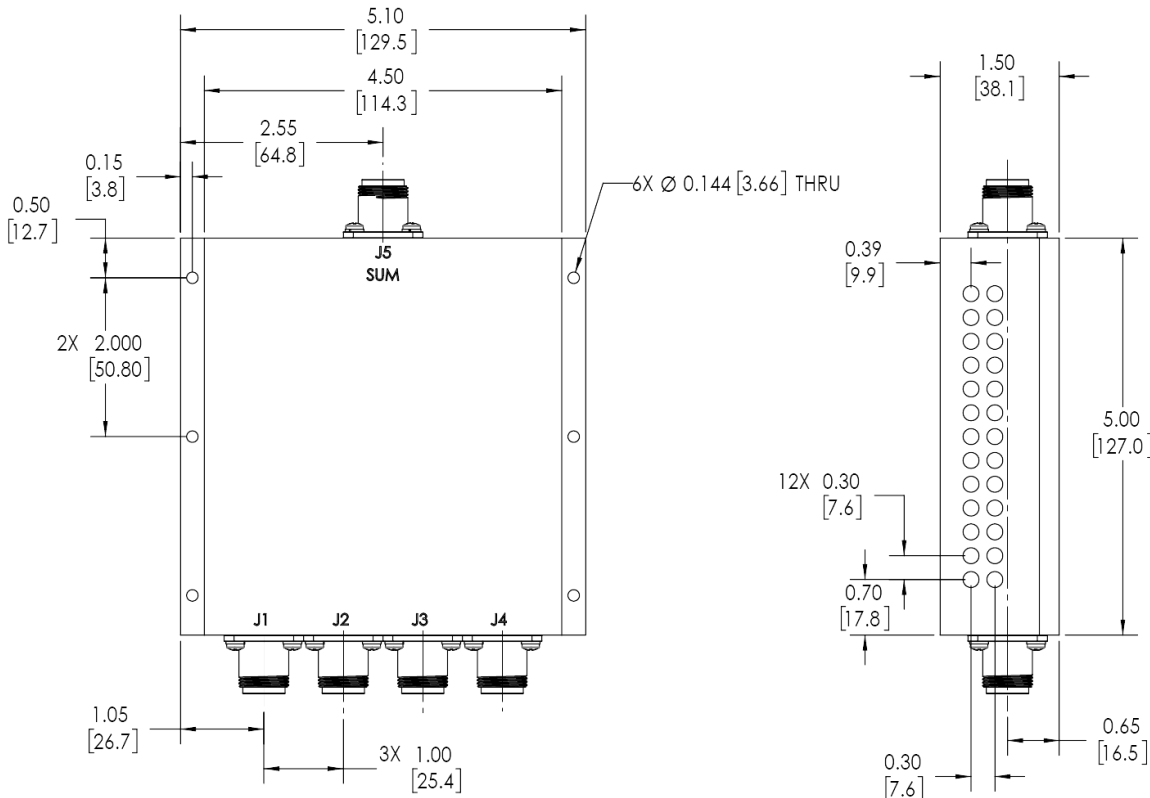


Restriction on use, duplication, or disclosure of proprietary information. This document contains proprietary information which is the sole property of Werlatone, Inc.

Werlatone, Inc. 17 Jon Barrett Road Patterson, NY 12563 T:(845)278-2220 F:(845)278-3440 sales@werlatone.com www.werlatone.com

RESTRICTION ON USE, DUPLICATION OR DISCLOSURE OF PROPRIETARY INFORMATION

This document contains proprietary information which is the sole property of Werlatone, Inc.





NOTES: UNLESS OTHERWISE SPECIFIED

- MATERIAL: ALUMINUM 6061-T6**
- FINISH: CHEM FILM PER MIL-DTL-5541F TYPE I CLASS 3 (YELLOW IRIDITE)**
- CONNECTORS: J1-J5: N FEMALE**

REVISION HISTORY

REV.	REVISION RECORD	DATE	APPROVED
A	ECN 9696	10/18/2019	RB

		UNLESS OTHERWISE SPECIFIED		DOWN	DATE	 WERLATONE SINCE 1965	17 Jon Barrett Rd Patterson, NY 12563		
		INTERPRET DRAWING IN ACCORDANCE WITH MIL-STD-100 DIMENSIONS PER ASME Y14.5M-2009 PARENTHESES FOR REFERENCE ONLY DIMENSIONS ARE IN INCHES DIMENSIONAL LIMITS APPLY BEFORE FINISHES TOLERANCES: ANGLES ± 2° 3 PL ± .005 [13] 2 PL ± .015 [38] REMOVE ALL BURRS AND SHARP EDGES R.01 MAX CONCENTRICITY MACHINED DIA. .002 FIM MACHINE TOOL MATCH .003 FIM		SD	10/18/2019		<div>OUTLINE</div>	REV	
				CHK	DATE				
				CS	10/18/2019				TITLE
				ENGR	DATE				
				INPR	DATE				
				QA	DATE				
				RLSE	DATE				
NEXT ASSY	USED ON	THIRD ANGLE PROJECTION 		B		CAGE CODE	DWG NO	A	
APPLICATION				SCALE		1:1.5		SHEET 1 OF 1	
						10550-500			

Restriction on use, duplication, or disclosure of proprietary information. This document contains proprietary information which is the sole property of Werlatone, Inc.
 Werlatone, Inc. 17 Jon Barrett Road Patterson, NY 12563 T:(845)278-2220 F:(845)278-3440 sales@werlatone.com www.werlatone.com