



PRODUCT DATA SHEET

D9623

Werlatone® Mismatch Tolerant® High Power Broadband RF Combiners and Dividers will operate into High Load VSWR Conditions, for extended periods, without damage. With extensive experience as a supplier to military platforms worldwide **Werlatone®** designs its High Power Broadband Combiners, Power Dividers, and N-Way Combiners for proper operation in the most stringent operating conditions.

Features:

High Power Wide Bandwidths Small Size Custom Designs Available

Electrical Specifications:

Frequency: 1000 - 3000 MHz
Power: 500 W CW
Insertion Loss: 0.45 dB Max.
VSWR: 1.40:1 Max.
Phase Balance: $\pm 5^\circ$ Max.
Amplitude Balance: 0.3 dB Max.
Isolation: Non-Isolated

Mechanical Specifications:

Type: Connectorized
Material: Aluminum 6061-T6
Surface Finish: Chem. Film Per MIL-DTL-5541F Type II Class 3 (RoHS, Trivalent)
Operating Temperature: -55°C to +75°C
Storage Temperature: -60°C to +85°C
Size: 5.5 x 4.25 x 1.6"

Connector Configurations:

Model	Sum Port (J5)	Input/Output (J1-J4)
D9623	SC Female	N Female
D9623-20	7/16 Female	N Female
C9623-CF-43*	SC Female	N Female

Unit designed for 95%, Condensing, MIL-810-G, Method 507, utilizing conformal coating on circuit (Humiseal), connector type shall insure protection against dissimilar metals.

When specified, Werlatone® High Power Combiners and RF Dividers will tolerate full input failures on adjacent port(s). This insures that remaining transmitter(s) may continue to operate until the amplifier system can be properly shut down for maintenance. Choose your specific connector configuration from a list of options. Additional connector configurations for our High Power RF Combiners/Dividers, Non-Coherent Combiners, and N-Way Combiners are available upon request.



WERLATONE

Model D9623

Combiners In-Phase Connectorized

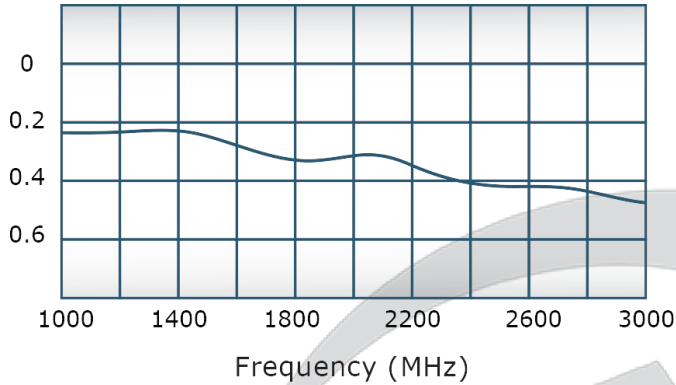


PRODUCT DATA SHEET

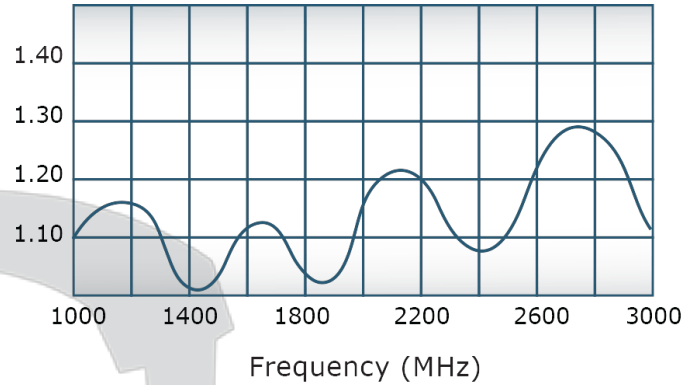
D9623

Performance Data (Specifications subject to change without notice):

Insertion Loss:



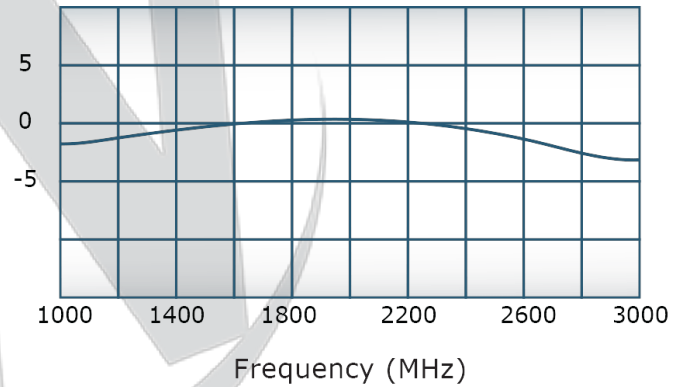
VSWR:



Since 1965:



Phase Balance:



Restriction on use, duplication, or disclosure of proprietary information. This document contains proprietary information which is the sole property of Werlatone, Inc.

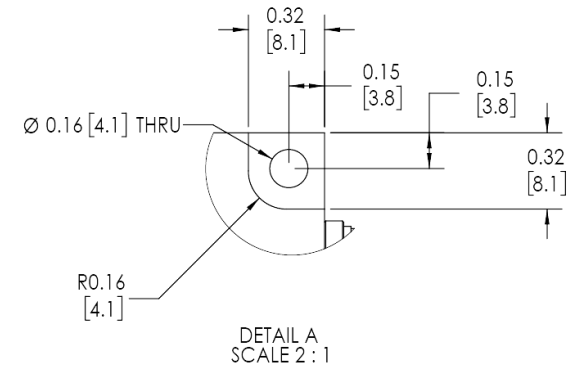
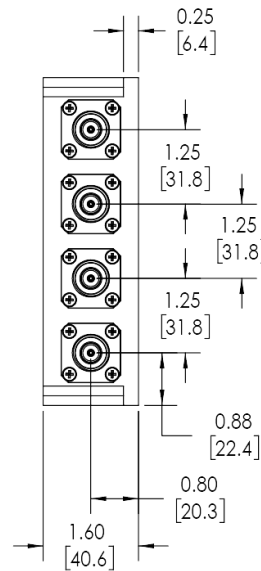
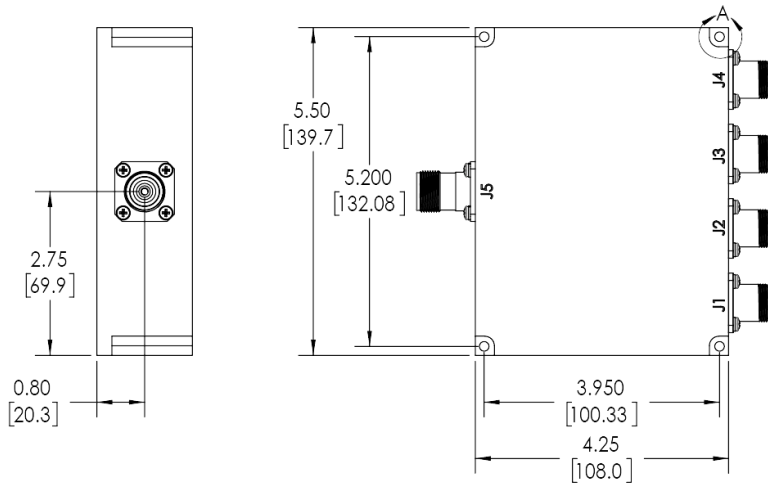
Werlatone, Inc. 17 Jon Barrett Road Patterson, NY 12563 T:(845)278-2220 F:(845)278-3440 sales@werlatone.com www.werlatone.com



RESTRICTION ON USE, DUPLICATION OR DISCLOSURE OF PROPRIETARY INFORMATION
This document contains proprietary information which is the sole property of Werlatone, Inc.

REVISION HISTORY			
REV.	REVISION RECORD	DATE	APPROVED
-	INITIAL RELEASE	7/15/2013	BW
A	ECN 8853	7/20/2015	BW
B	ECN 9696	11/25/2019	RB

NOTES: UNLESS OTHERWISE SPECIFIED

- MATERIAL: ALUMINUM 6061-T6**
- FINISH: CHEM FILM PER MIL-DTL-5541F TYPE I CLASS 3 (YELLOW IRIDITE)**
- CONNECTORS:
J1-J4: N FEMALE
J5: SC FEMALE**



		UNLESS OTHERWISE SPECIFIED		OWN	DATE	 WERLATONE SINCE 1965	17 Jon Barrett Rd Patterson, NY 12563	
		INTERPRET DRAWING IN MIL-STD-100		SD	11/25/2019			
		DIMENSIONS PER ASME Y14.5M-2009		CHK	DATE			
		PARENTHESES FOR REFERENCE ONLY		CS	11/25/2019			
		DIMENSIONS ARE IN INCHES		ENGR	DATE	TITLE		
		DIMENSIONAL LIMITS APPLY BEFORE FINISHES		DATE	DATE	<h1>OUTLINE</h1>		
		TOLERANCES:		DATE	DATE			
		ANGLES ± 2°		SIZE	CAGE CODE	DWG NO	REV	
		3 PL ± .005 [13]		SCALE	21028-500			
		2 PL ± .015 [38]		B	1:2			
		REMOVE ALL BURRS AND SHARP EDGES R.01 MAX		DATE	DATE	DATE	DATE	
		CONCENTRICITY MACHINED DIA. .002 FIM		DATE	DATE	DATE	DATE	
		MACHINE TOOL MATCH .003 FIM		DATE	DATE	DATE	DATE	
NEXT ASSY		USED ON		THIRD ANGLE PROJECTION				SHEET 1 OF 1
APPLICATION								

Restriction on use, duplication, or disclosure of proprietary information. This document contains proprietary information which is the sole property of Werlatone, Inc.
Werlatone, Inc. 17 Jon Barrett Road Patterson, NY 12563 T:(845)278-2220 F:(845)278-3440 sales@werlatone.com www.werlatone.com