



PRODUCT DATA SHEET

D10296

Werlatone® Mismatch Tolerant® High Power Broadband RF Combiners and Dividers will operate into High Load VSWR Conditions, for extended periods, without damage. With extensive experience as a supplier to military platforms worldwide **Werlatone®** designs its High Power Broadband Combiners, Power Dividers, and N-Way Combiners for proper operation in the most stringent operating conditions.

Features:

High Power Wide Bandwidths Small Size High Isolation Custom Designs Available

Electrical Specifications:

Frequency: 2000 - 6000 MHz
Power: 200 W CW
Insertion Loss: 1.0 dB Max.
VSWR: 1.60:1 Max.
Phase Balance: $\pm 5^\circ$ Max.
Amplitude Balance: 0.3 dB Max.
Isolation: 15 dB Min.

Mechanical Specifications:

Type: Connectorized
Material: Aluminum 6061-T6
Surface Finish: Chem. Film Per MIL-DTL-5541F Type II Class 3 (Clear Iridite) RoHS Compliant Available
Operating Temperature: -55°C to +75°C
Storage Temperature: -60°C to +85°C
Weight: 1.1 lbs.
Size: 3.9 x 3.6 x 1.06"

Connector Configurations:

Model	Sum Port (J1)	Input/Output (J2-J5)
D10296-12	N Female	SMA
D10296-302	TNC	SMA

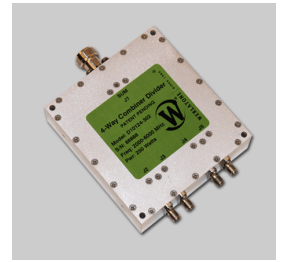
When specified, Werlatone® High Power Combiners and RF Dividers will tolerate full input failures on adjacent port(s). This insures that remaining transmitter(s) may continue to operate until the amplifier system can be properly shut down for maintenance. Choose your specific connector configuration from a list of options. Additional connector configurations for our High Power RF Combiners/Dividers, Non-Coherent Combiners, and N-Way Combiners are available upon request.



WERLATONE

Model D10296

Combiners In-Phase Connectorized

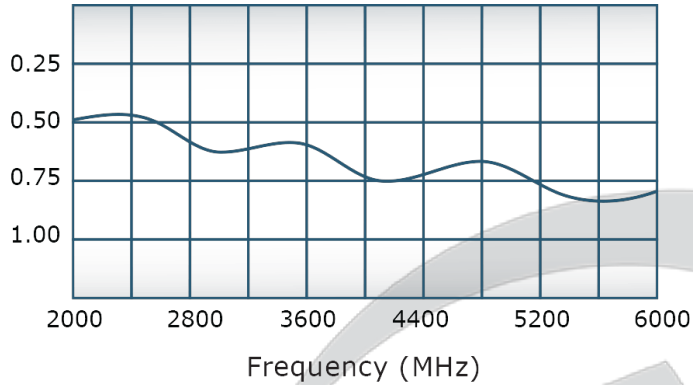


PRODUCT DATA SHEET

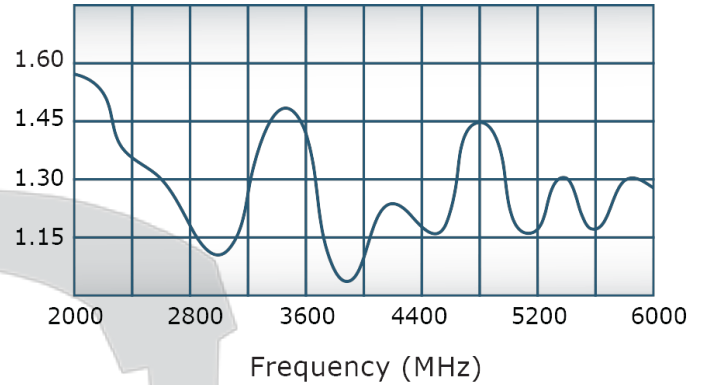
D10296

Performance Data (Specifications subject to change without notice):

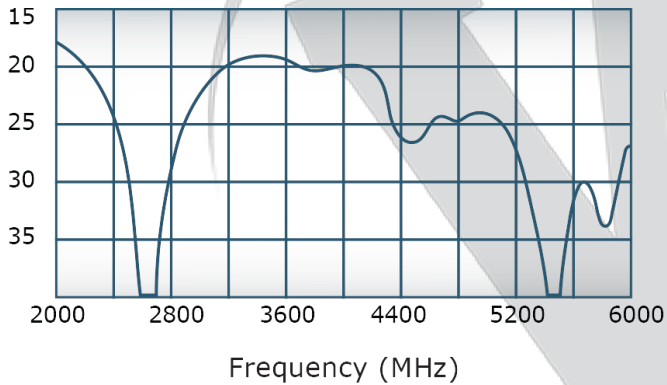
Insertion Loss:



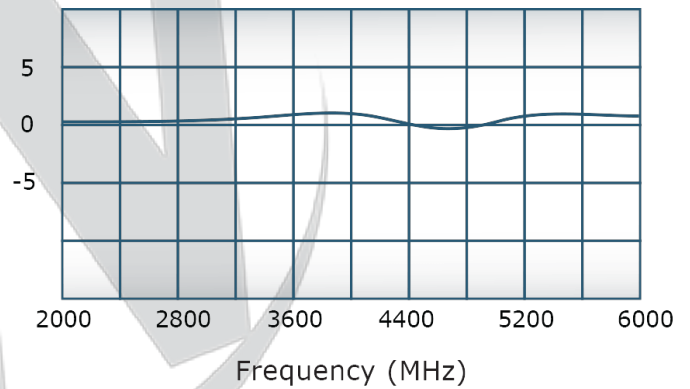
VSWR:



Isolation:



Phase Balance:

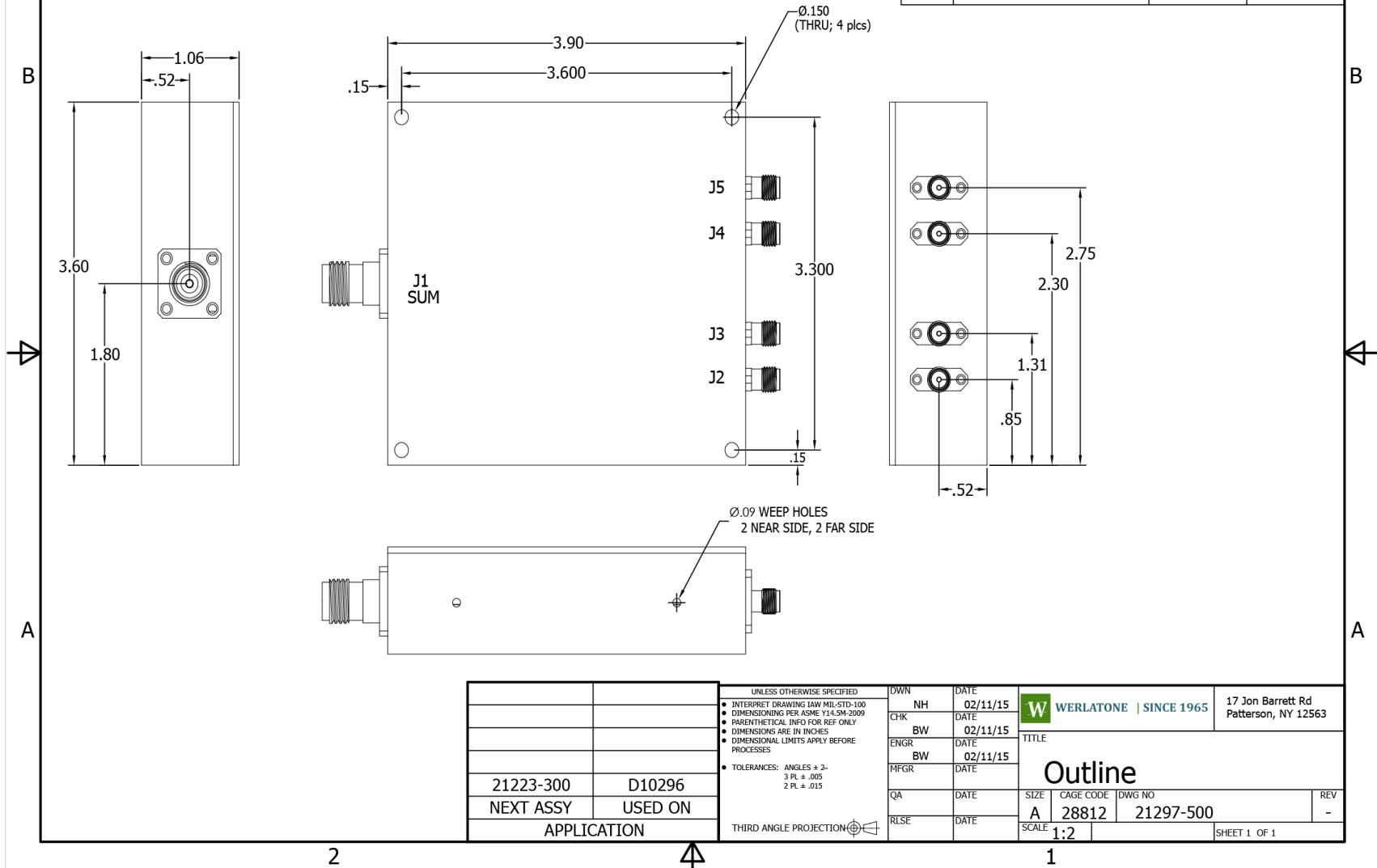




Restriction on use, duplication, or disclosure of proprietary information. This document contains proprietary information which is the sole property of Werlatone, Inc.

Werlatone, Inc. 17 Jon Barrett Road Patterson, NY 12563 T:(845)278-2220 F:(845)278-3440 sales@werlatone.com www.werlatone.com

RESTRICTION ON USE, DUPLICATION OR DISCLOSURE OF PROPRIETARY INFORMATION
 This document contains proprietary information which is the sole property of Werlatone, Inc.

REVISION HISTORY			
REV	REVISION RECORD	DATE	APPROVED
-	Initial Rls	2/11/2015	BW



		UNLESS OTHERWISE SPECIFIED		DWN	DATE	 WERLATONE SINCE 1965			17 Jon Barrett Rd Patterson, NY 12563	
		• INTERPRET DRAWING IN ACCORDANCE WITH MIL-STD-100		CHK	NH	02/11/15				
		• DIMENSIONING PER ASME Y14.5M-2009			DATE					
		• PARENTHESES ARE FOR REF ONLY		ENGR	BW	02/11/15	TITLE			
		• DIMENSIONS ARE IN INCHES			DATE					
		• DIMENSIONAL LIMITS APPLY BEFORE PROCESSES		MFGR	BW	02/11/15				
		• TOLERANCES: ANGLES ± 2°		QA	DATE		SIZE	CAGE CODE	DWG NO	REV
		3 PL ± .005					A	28812	21297-500	-
		2 PL ± .015		RLSE	DATE		SCALE	1:2		SHEET 1 OF 1
21223-300										
D10296										
NEXT ASSY		USED ON								
APPLICATION		THIRD ANGLE PROJECTION 								

Restriction on use, duplication, or disclosure of proprietary information. This document contains proprietary information which is the sole property of Werlatone, Inc.
 Werlatone, Inc. 17 Jon Barrett Road Patterson, NY 12563 T:(845)278-2220 F:(845)278-3440 sales@werlatone.com www.werlatone.com