

## PRODUCT DATA SHEET

**D10363**

**Werlatone® Mismatch Tolerant®** High Power Broadband RF Combiners and Dividers will operate into High Load VSWR Conditions, for extended periods, without damage. With extensive experience as a supplier to military platforms worldwide **Werlatone®** designs its High Power Broadband Combiners, Power Dividers, and N-Way Combiners for proper operation in the most stringent operating conditions.

### Features:

High Power      Wide Bandwidths      Small Size      High Isolation      Custom Designs Available

### Electrical Specifications:

Frequency: 290 - 320 MHz  
Power: 400 W CW  
Insertion Loss: 0.3 dB Max.  
VSWR: 1.20:1 Max.  
Phase Balance:  $\pm 5^\circ$  Max.  
Amplitude Balance: 0.2 dB Max.  
Isolation: 25 dB Min.

### Mechanical Specifications:

Type: Connectorized  
Material: Aluminum 6061-T6  
Surface Finish: Chem. Film Per MIL-DTL-5541F Type I Class 3 (Yellow Iridite) RoHS Compliant Available  
Operating Temperature: -55°C to +75°C  
Storage Temperature: -60°C to +85°C  
Weight: 5.75 lbs.  
Size: 7.0 x 7.5 x 2.25"

### Connector Configurations:

Model	Sum Port (J5)	Input/Output (J1-J4)
D10363-10	N Female	N Female
D10363-41	SC Female	N Female

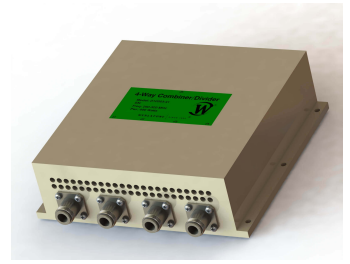
**When specified, Werlatone® High Power Combiners and RF Dividers** will tolerate full input failures on adjacent port(s). This insures that remaining transmitter(s) may continue to operate until the amplifier system can be properly shut down for maintenance. Choose your specific connector configuration from a list of options. Additional connector configurations for our High Power RF Combiners/Dividers, Non-Coherent Combiners, and N-Way Combiners are available upon request.



# WERLATONE

Model D10363

Combiners In-Phase Connectorized

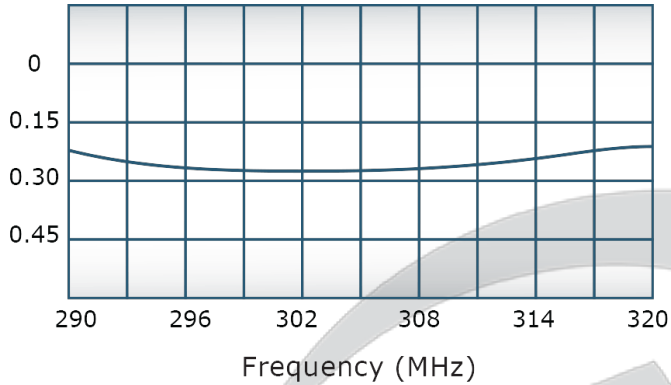


## PRODUCT DATA SHEET

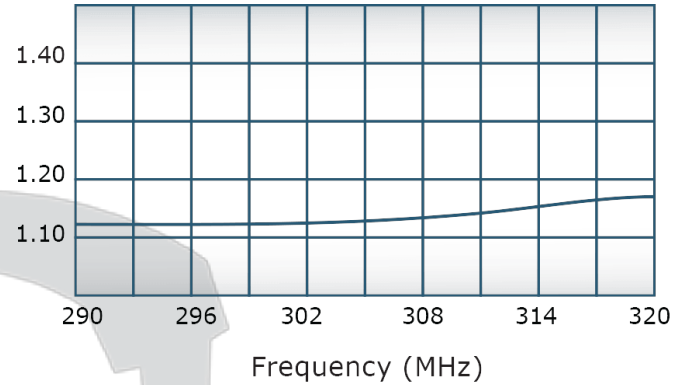
D10363

### Performance Data (Specifications subject to change without notice):

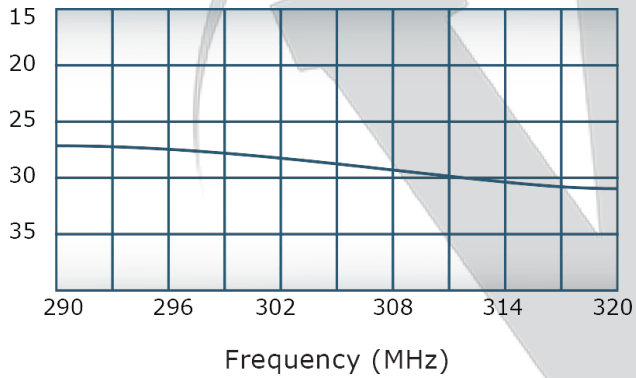
Insertion Loss:



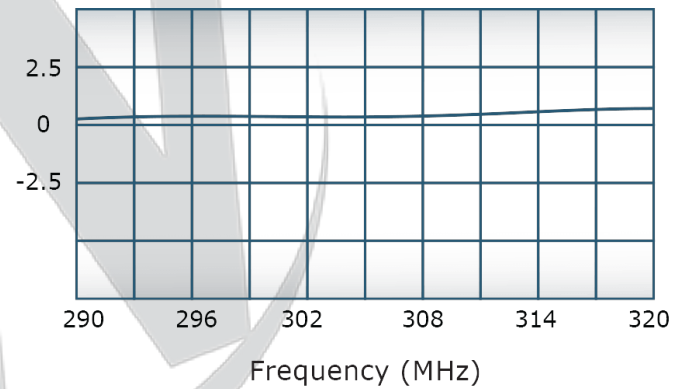
VSWR:



Isolation:



Phase Balance:



**Restriction on use, duplication, or disclosure of proprietary information.** This document contains proprietary information which is the sole property of Werlatone, Inc.

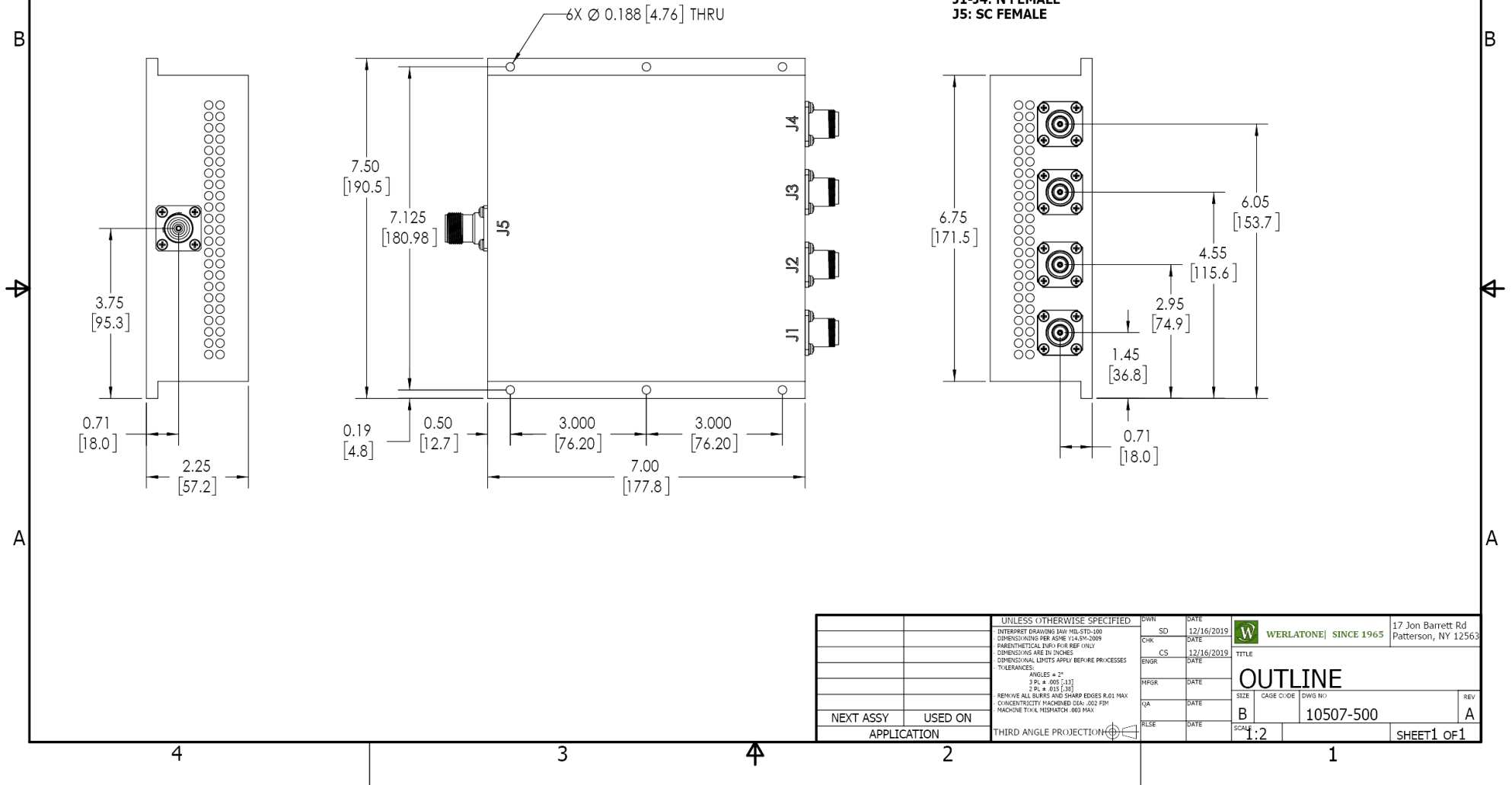
Werlatone, Inc. 17 Jon Barrett Road Patterson, NY 12563 T:(845)278-2220 F:(845)278-3440 sales@werlatone.com www.werlatone.com



**RESTRICTION ON USE, DUPLICATION OR DISCLOSURE OF PROPRIETARY INFORMATION**  
 This document contains proprietary information which is the sole property of Werlatone, Inc.

REVISION HISTORY			
REV.	REVISION RECORD	DATE	APPROVED
A	ECN 9696	12/16/2019	RB

**NOTES: UNLESS OTHERWISE SPECIFIED**

- 1. MATERIAL: ALUMINUM 6061-T6**
- 2. FINISH: CHEM FILM PER MIL-DTL-5541F TYPE II CLASS 3 (YELLOW IRIDITE)**
- 3. CONNECTORS:**  
**J1-J4: N FEMALE**  
**J5: SC FEMALE**



		UNLESS OTHERWISE SPECIFIED		OWN	DATE	 <b>WERLATONE</b> SINCE 1965	17 Jon Barrett Rd Patterson, NY 12563				
		INTERPRET DRAWING IAW MIL-STD-100 DIMENSIONS PER ASME Y14.5M-2009 PARENTHESES FOR REF ONLY DIMENSIONS ARE IN INCHES DIMENSIONAL LIMITS APPLY BEFORE FINISHES TOLERANCES: ANGLES ± 2° 3 PL ± .005 (.13) 2 PL ± .015 (.38) REMOVE ALL BURRS AND SHARP EDGES R.01 MAX CONCENTRICITY MACHINED DIA. .002 FIM MACHINE TOOL MISMATCH .003 FIM		SD	12/16/2019		TITLE  <b>OUTLINE</b>	SIZE	CAGE CODE	DWG NO <b>10507-500</b>	REV <b>A</b>
				CHK	DATE						
				CS	12/16/2019						
NEXT ASSY		USED ON		ENGR	DATE						
APPLICATION		THIRD ANGLE PROJECTION 		INPR	DATE						
				QA	DATE						
				RLSE	DATE						

**Restriction on use, duplication, or disclosure of proprietary information.** This document contains proprietary information which is the sole property of Werlatone, Inc.  
 Werlatone, Inc. 17 Jon Barrett Road Patterson, NY 12563 T:(845)278-2220 F:(845)278-3440 sales@werlatone.com www.werlatone.com