

PRODUCT DATA SHEET

D10210

Werlatone® Mismatch Tolerant® High Power Broadband RF Combiners and Dividers will operate into High Load VSWR Conditions, for extended periods, without damage. With extensive experience as a supplier to military platforms worldwide **Werlatone®** designs its High Power Broadband Combiners, Power Dividers, and N-Way Combiners for proper operation in the most stringent operating conditions.

Features:

High Power Wide Bandwidths Small Size High Isolation Custom Designs Available

Electrical Specifications:

Frequency: 5 - 20 MHz
Power: 1000 W CW
Insertion Loss: 0.3 dB Max.
VSWR: 1.30:1 Max.
Phase Balance: $\pm 5^\circ$ Max.
Amplitude Balance: 0.3 dB Max.
Isolation: 20 dB Min.

Mechanical Specifications:

Type: Connectorized
Material: Aluminum 6061-T6
Surface Finish: Chem. Film Per MIL-DTL-5541F Type I Class 3 (Yellow Iridite) RoHS Compliant Available
Operating Temperature: -55°C to +75°C
Storage Temperature: -60°C to +85°C
Weight: 2 lbs. 12 oz.
Size: 5.0 x 6.0 x 2.0"

Connector Configurations:

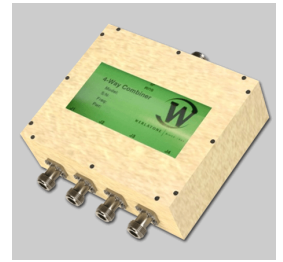
Model	Sum Port (J5)	Input/Output (J1-J4)
D10210-10	N Female	N Female
D10210-12	N Female	SMA
D10210-13	N Female	BNC
D10210-20	7/16 Female	N Female
D10210-113	BNC	BNC
D10210-631*	Right Angle N Female	BNC
D10210-632*	Right Angle N Female	SMA

Starred options are Type II Class 3 (Clear Iridite)



WERLATONE

Model D10210
Combiners In-Phase Connectorized

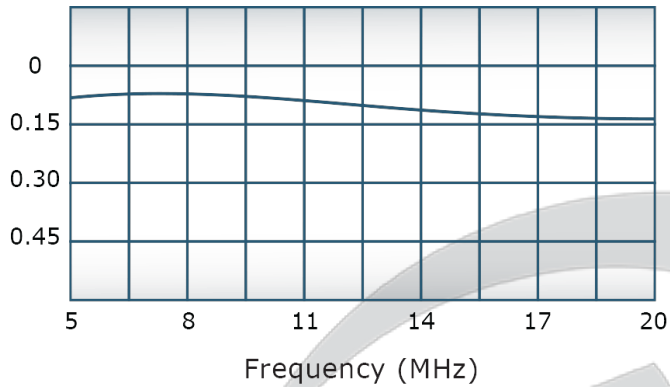


PRODUCT DATA SHEET

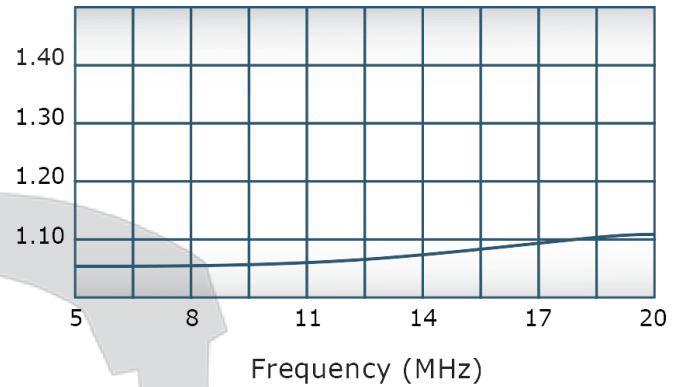
D10210

Performance Data (Specifications subject to change without notice):

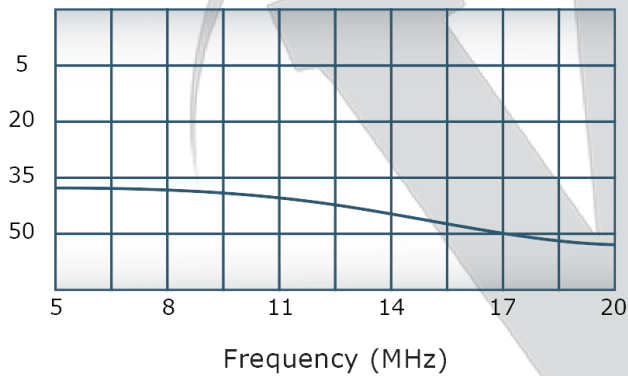
Insertion Loss:



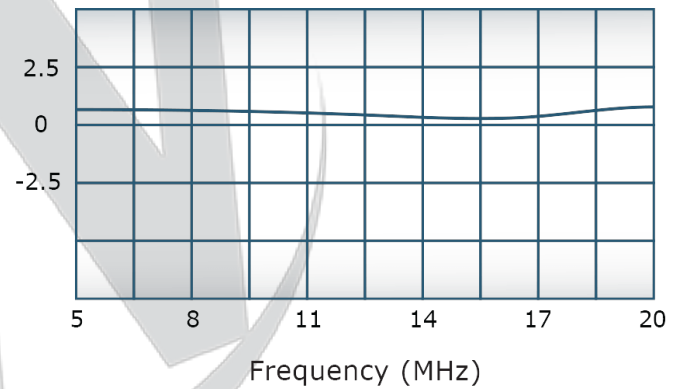
VSWR:



Isolation:

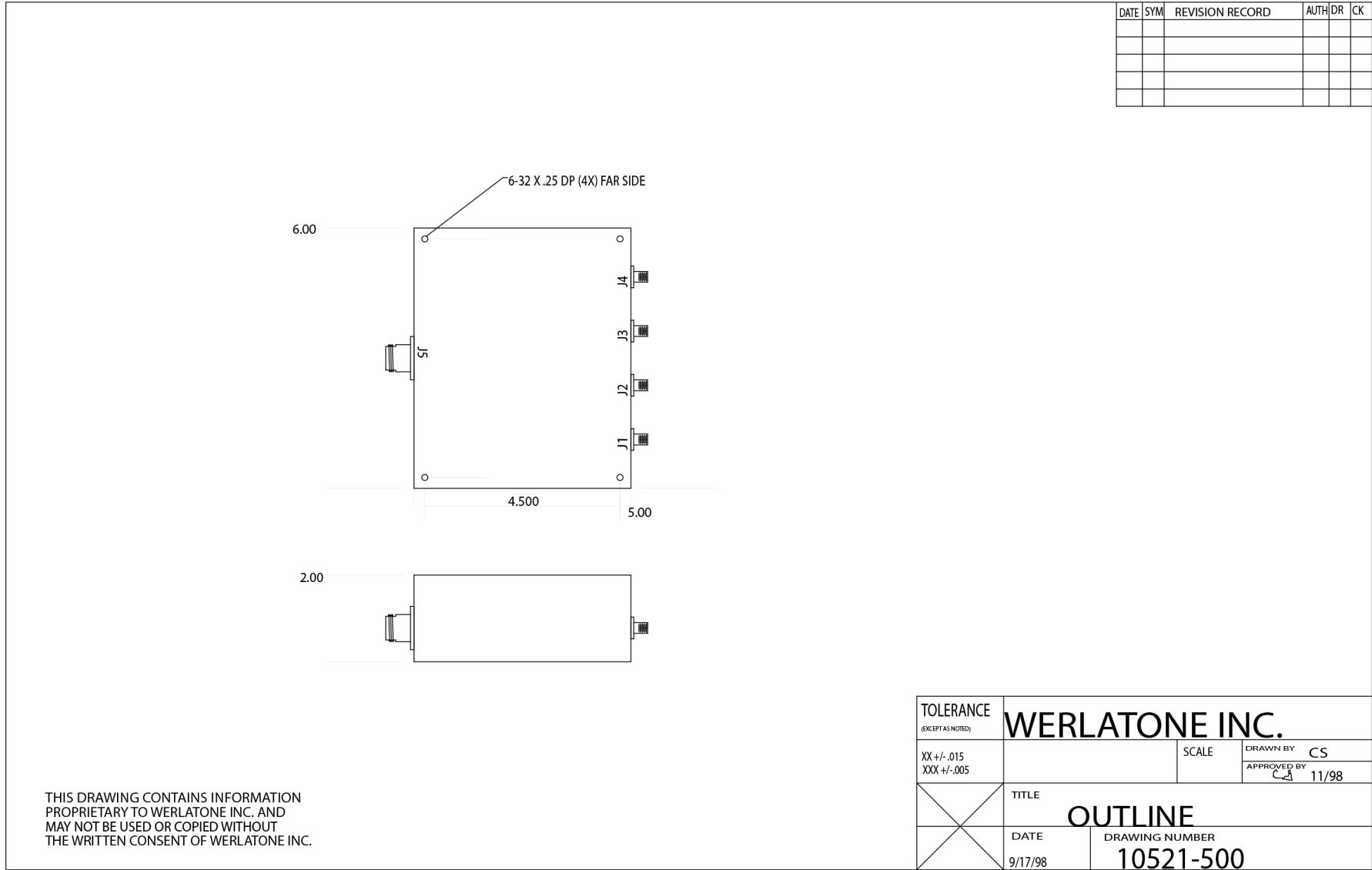


Phase Balance:



Restriction on use, duplication, or disclosure of proprietary information. This document contains proprietary information which is the sole property of Werlatone, Inc.

Werlatone, Inc. 17 Jon Barrett Road Patterson, NY 12563 T:(845)278-2220 F:(845)278-3440 sales@werlatone.com www.werlatone.com



Restriction on use, duplication, or disclosure of proprietary information. This document contains proprietary information which is the sole property of Werlatone, Inc. Werlatone, Inc. 17 Jon Barrett Road Patterson, NY 12563 T:(845)278-2220 F:(845)278-3440 sales@werlatone.com www.werlatone.com