

PRODUCT DATA SHEET

D6309

Werlatone® Mismatch Tolerant® High Power Broadband RF Combiners and Dividers will operate into High Load VSWR Conditions, for extended periods, without damage. With extensive experience as a supplier to military platforms worldwide **Werlatone®** designs its High Power Broadband Combiners, Power Dividers, and N-Way Combiners for proper operation in the most stringent operating conditions.

Features:

High Power Wide Bandwidths Small Size Custom Designs Available

Electrical Specifications:

Frequency:	2300 - 2400 MHz
Power:	2000 W CW
Insertion Loss:	0.2 dB Max.
VSWR:	1.15:1 Max.
Phase Balance:	$\pm 5^\circ$ Max.
Amplitude Balance:	0.2 dB Max.
Isolation:	Non-Isolated

Mechanical Specifications:

Type:	Connectorized
Material:	Aluminum 6061-T6
Surface Finish:	Chem. Film Per MIL-DTL-5541F Type I Class 3 (Yellow Iridite) RoHS Compliant Available
Operating Temperature:	-55°C to +75°C
Storage Temperature:	-60°C to +85°C
Size:	Radial

Connector Configurations:

Model	Sum Port (J17)	Input/Output (J1-J16)
D6309-72	7/8" EIA	SMA Female

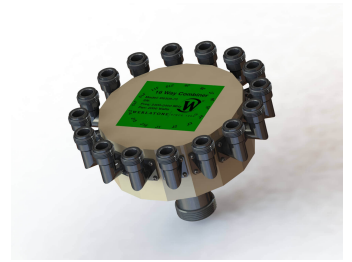
When specified, Werlatone® High Power Combiners and RF Dividers will tolerate full input failures on adjacent port(s). This insures that remaining transmitter(s) may continue to operate until the amplifier system can be properly shut down for maintenance. Choose your specific connector configuration from a list of options. Additional connector configurations for our High Power RF Combiners/Dividers, Non-Coherent Combiners, and N-Way Combiners are available upon request.



WERLATONE

Model D6309

Combiners In-Phase Connectorized Radial

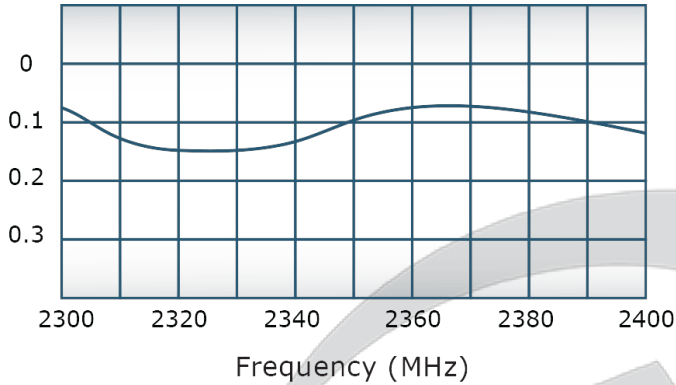


PRODUCT DATA SHEET

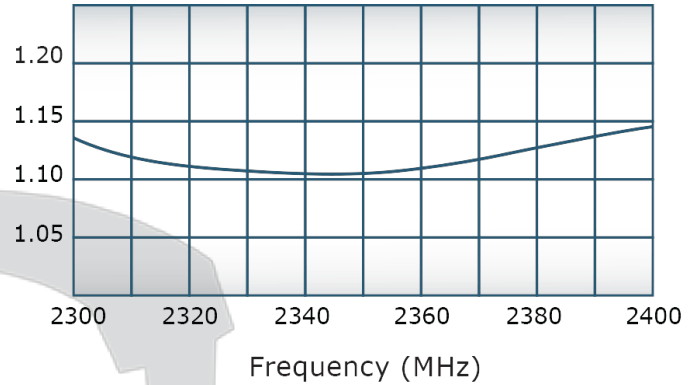
D6309

Performance Data (Specifications subject to change without notice):

Insertion Loss:



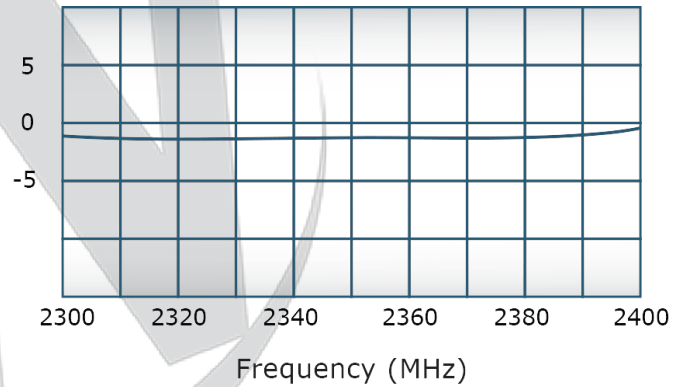
VSWR:



Since 1965:



Phase Balance:



Restriction on use, duplication, or disclosure of proprietary information. This document contains proprietary information which is the sole property of Werlatone, Inc.

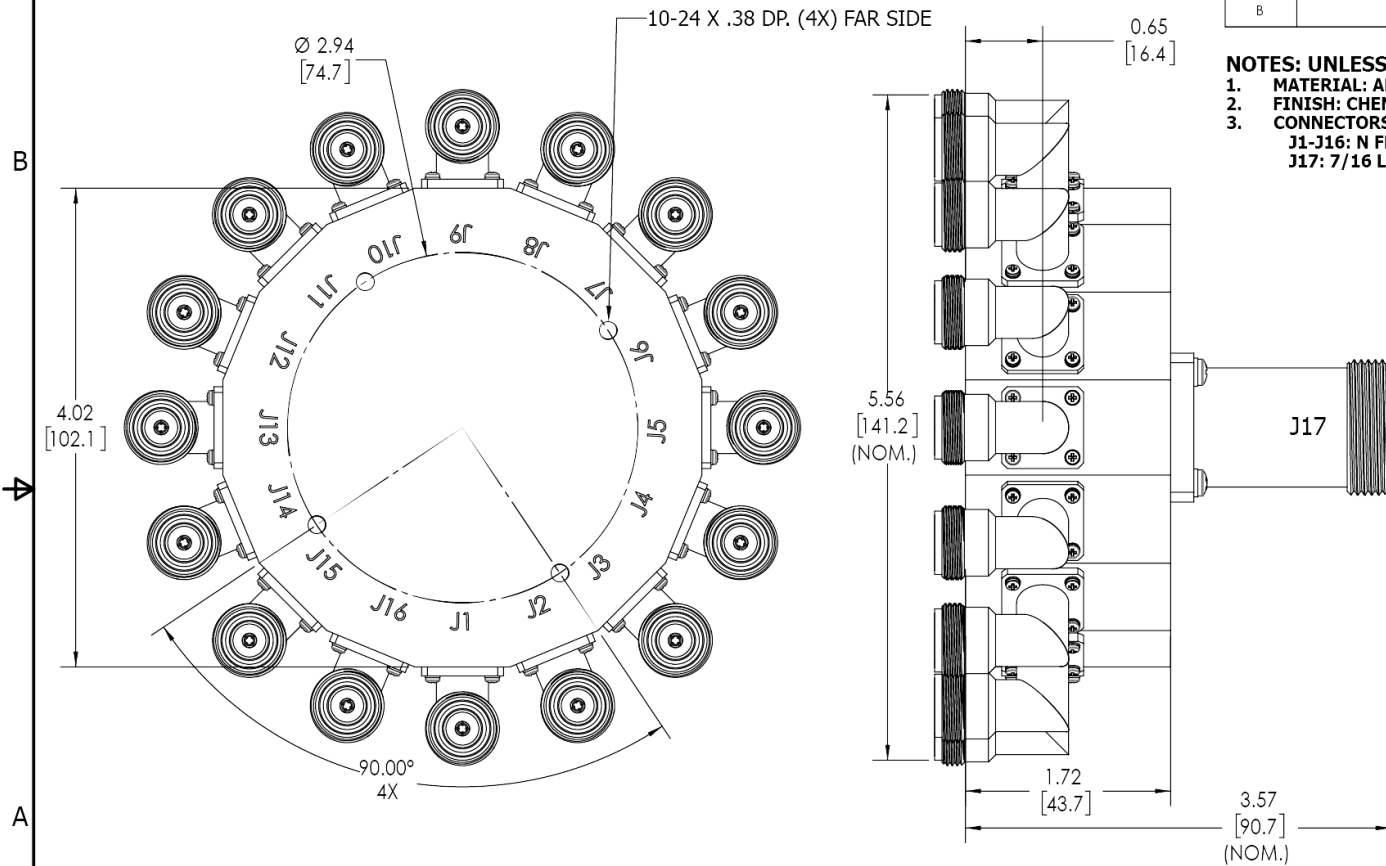
Werlatone, Inc. 17 Jon Barrett Road Patterson, NY 12563 T:(845)278-2220 F:(845)278-3440 sales@werlatone.com www.werlatone.com



RESTRICTION ON USE, DUPLICATION OR DISCLOSURE OF PROPRIETARY INFORMATION
This document contains proprietary information which is the sole property of Werlatone, Inc.

REVISION HISTORY			
REV.	REVISION RECORD	DATE	APPROVED
A	ECN 7936	12/21/2012	CS
B	ECN 9696	9/12/2019	RB

NOTES: UNLESS OTHERWISE SPECIFIED

- MATERIAL: ALUMINUM 6061-T6**
- FINISH: CHEM FILM PER MIL-DTL-5541F TYPE I CLASS 3 (YELLOW IRIDITE)**
- CONNECTORS:**
 - J1-J16: N FEMALE (INPUT/OUTPUT)**
 - J17: 7/16 LONG BARREL (SUM PORT)**



		UNLESS OTHERWISE SPECIFIED		OWN	DATE	 WERLATONE SINCE 1965		17 Jon Barrett Rd Patterson, NY 12563	
		INTERPRET DRAWING 1000 MIL-STD-100		SD	9/12/2019				
		DIMENSIONS PER ASME Y14.5M-2009		CHK	DATE	TITLE		OUTLINE	
		PARENTHESES FOR REF ONLY		CS	9/12/2019				
		DIMENSIONS ARE IN INCHES		ENGR	DATE	B		10627-501	
		DIMENSIONAL LIMITS APPLY BEFORE FINISHES		INPR	DATE				
		TOLERANCES:		QA	DATE	B		REV	
		ANGLES ± 2°		RLSE	DATE				
		3 PL ± .005 (.13)							
		2 PL ± .015 (.38)							
		REMOVE ALL BURRS AND SHARP EDGES R.01 MAX							
		CONCENTRICITY MACHINED DIA. .002 FIM							
		MACHINE TOOL MISMATCH .003 FIM							
NEXT ASSY USED ON		THIRD ANGLE PROJECTION							
APPLICATION									
				SCALE 1:1					
				SHEET 1 OF 1					

Restriction on use, duplication, or disclosure of proprietary information. This document contains proprietary information which is the sole property of Werlatone, Inc.
Werlatone, Inc. 17 Jon Barrett Road Patterson, NY 12563 T:(845)278-2220 F:(845)278-3440 sales@werlatone.com www.werlatone.com