

PRODUCT DATA SHEET

QH8922

Our patented 3 dB 90° Hybrid Couplers provide:

- Superior component performance starting at 3:1 Bandwidth.
- Thicker center boards for high power and increased repeatability.
- Bonded structures which eliminate any air gaps between substrates.
- More sections per bandwidth for better coupling flatness.
- Electrically shorter and physically smaller RF components.

Features:

High Power Wide Bandwidths Small Size Excellent Amplitude Balance

Electrical Specifications:

Frequency: 150 - 2000 MHz
Power: 100 W CW
Insertion Loss: 0.75 dB Max.
VSWR: 1.40:1 Max.
Phase Balance: $90^\circ \pm 5^\circ$ dB Max.
Amplitude Balance: ± 1.0 dB Max.
Isolation: 17 dB Min.

Mechanical Specifications:

Type: Surface Mount
QH8922-Ag: Immersion Silver (RoHS Compliant)
Weight: 0.4 oz.
Size: 1.47 x 1.13 x 0.16"

Port Configurations:

J1	J2	J3	J4
Sum	-3 dB, 0°	-3 dB, -90°	Isolated
-3 dB, 0°	Sum	Isolated	-3 dB, -90°
-3 dB, -90°	Isolated	Sum	-3 dB, 0°
Isolated	-3 dB, -90°	-3 dB, 0°	Sum

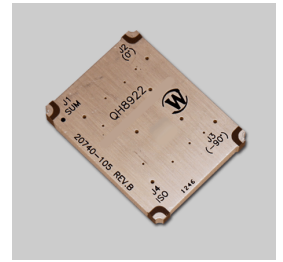
Werlatone's breakthrough technology allows us to build our existing line of Broadband 3 dB High Power 90° Hybrid Couplers. Connectorized 3 dB 90° Hybrid Coupler models are available with a choice of connectors. Several of our existing High Power 3 dB 90° RF Couplers are three port designs, wherein the difference port is internally terminated with a high power termination. This eliminates the need for a customer supplied external load for each Hybrid Coupler.



WERLATONE

Model QH8922

90° Hybrids Surface Mount (SMT) & Drop

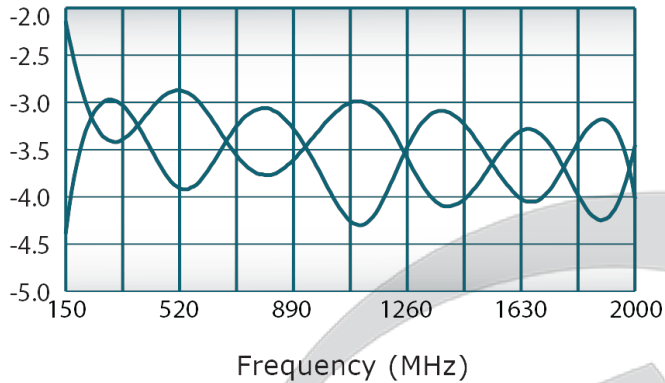


PRODUCT DATA SHEET

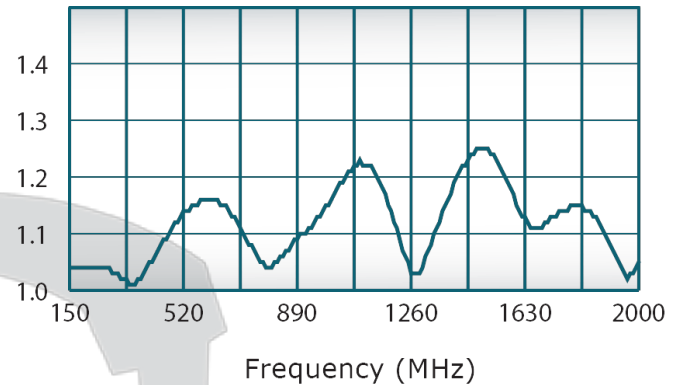
QH8922

Performance Data (Specifications subject to change without notice):

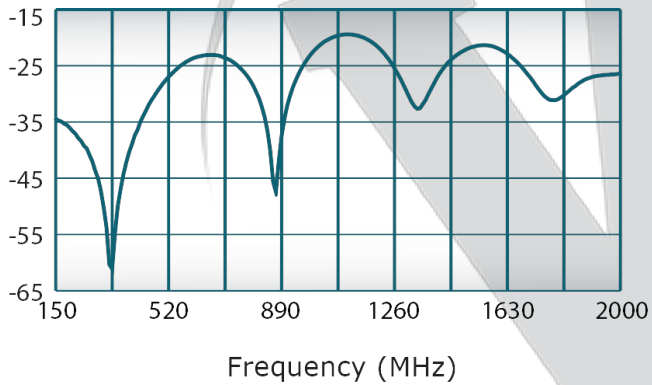
Coupling:



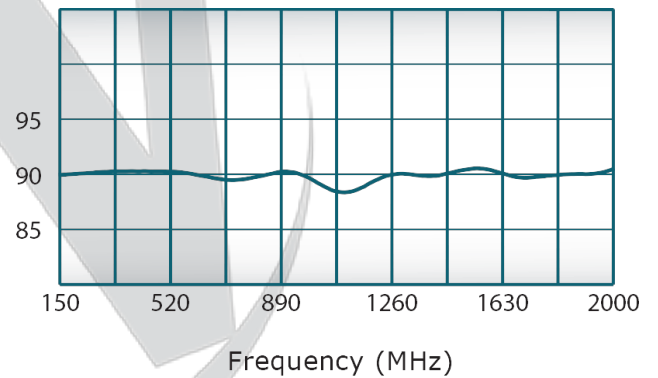
VSWR:



Isolation:



Phase Balance:



Restriction on use, duplication, or disclosure of proprietary information. This document contains proprietary information which is the sole property of Werlatone, Inc.

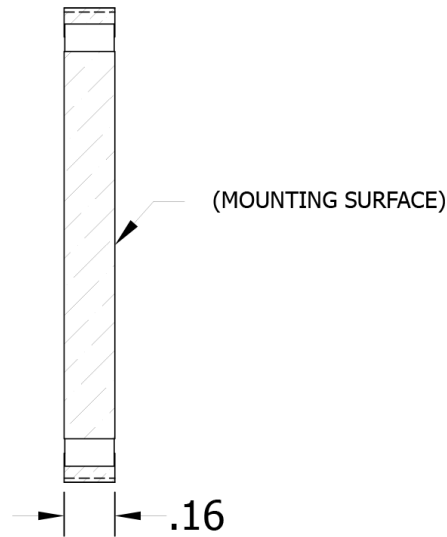
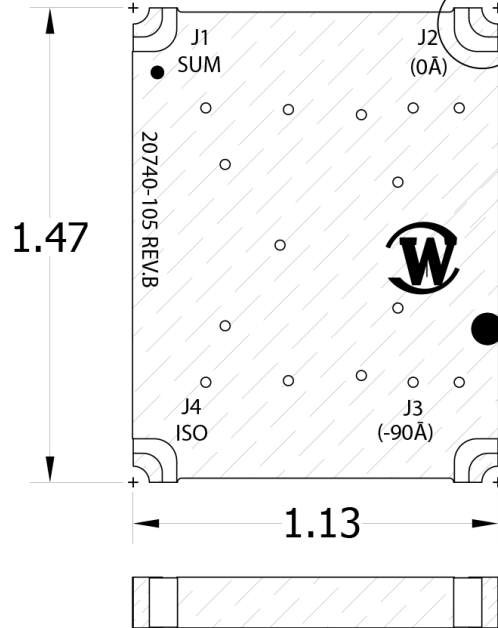
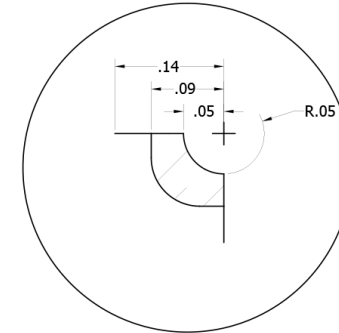
Werlatone, Inc. 17 Jon Barrett Road Patterson, NY 12563 T:(845)278-2220 F:(845)278-3440 sales@werlatone.com www.werlatone.com

RESTRICTION ON USE, DUPLICATION OR DISCLOSURE OF PROPRIETARY INFORMATION
 This document contains proprietary information which is the sole property of Werlatone, Inc.

SEE DETAIL A
 (4 PLCS.)

REVISION HISTORY					
DATE	REV	REVISION RECORD	AUTH	CHK	APPV
6/14/2011	-	INITIAL RELEASE	NH	BW	BW
1/27/2012	A	ECN # 5549	NH	BW	BW
4/18/2012	B	ECN # 5644	NH	BW	BW

**DETAIL A
 SCALE 5 : 1**



UNLESS OTHERWISE SPECIFIED		DWN	DATE	W WERLATONE SINCE 1965		17 Jon Barrett Rd Patterson, NY 12563					
INTERPRET DRAWING IAW MIL-STD-100		CHK	NH	DATE	06/14/11	TITLE OUTLINE USED ON					
DIMENSIONING PER ASME Y14.5M-2009		ENGR	BW	DATE	06/14/11						
PARAMETRICAL INFO FOR REF ONLY		QA	BW	DATE	06/14/11						
DIMENSIONS ARE IN INCHES		RLSE		DATE							
TOLERANCES: ANGLE ± 2°				SIZE	A	CAGE CODE	28812	DWG NO	20740-500	REV	B
3 PL DECIMALS ± .005				SCALE	1:1			SHEET 1 OF 1			
2 PL DECIMALS ± .015											
THIRD ANGLE PROJECTION											

Restriction on use, duplication, or disclosure of proprietary information. This document contains proprietary information which is the sole property of Werlatone, Inc.
 Werlatone, Inc. 17 Jon Barrett Road Patterson, NY 12563 T:(845)278-2220 F:(845)278-3440 sales@werlatone.com www.werlatone.com