

PRODUCT DATA SHEET

QH7862

Our patented 3 dB 90° Hybrid Couplers provide:

- Superior component performance starting at 3:1 Bandwidth.
- Thicker center boards for high power and increased repeatability.
- Bonded structures which eliminate any air gaps between substrates.
- More sections per bandwidth for better coupling flatness.
- Electrically shorter and physically smaller RF components.

Features:

High Power Wide Bandwidths Small Size Excellent Amplitude Balance

Electrical Specifications:

Frequency: 450 - 2500 MHz
Power: 125 W CW
Insertion Loss: 0.5 dB Max.
VSWR: 1.30:1 Max.
Phase Balance: 90° ± 5° dB Max.
Amplitude Balance: ± 0.45 dB Max.
Isolation: 18 dB Min.

Mechanical Specifications:

Type: Surface Mount
Plating Options: QH7862-Pb: Electrodeposited Tin/Lead
QH7862-Sn: Immersion Tin (RoHS Compliant)
QH7862-Ag: Immersion Silver (RoHS Compliant)
QH7862-Au (ENIG)
Weight: 6 grams
Size: 1.5 x 1.1 x 0.095"

Port Configurations:

J1	J2	J3	J4
Input	-3 dB, 0°	-3 dB, -90°	Isolated
-3 dB, 0°	Input	Isolated	-3 dB, -90°
-3 dB, -90°	Isolated	Input	-3 dB, 0°
Isolated	-3 dB, -90°	-3 dB, 0°	Input

Werlatone's breakthrough technology allows us to build our existing line of Broadband 3 dB High Power 90° Hybrid Couplers. Connectorized 3 dB 90° Hybrid Coupler models are available with a choice of connectors. Several of our existing High Power 3 dB 90° RF Couplers are three port designs, wherein the difference port is internally terminated with a high power termination. This eliminates the need for a customer supplied external load for each Hybrid Coupler.

Restriction on use, duplication, or disclosure of proprietary information. This document contains proprietary information which is the sole property of Werlatone, Inc.

Werlatone, Inc. 17 Jon Barrett Road Patterson, NY 12563 T:(845)278-2220 F:(845)278-3440 sales@werlatone.com www.werlatone.com

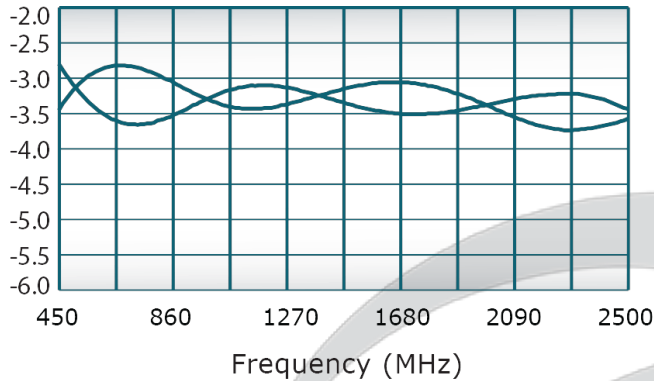


PRODUCT DATA SHEET

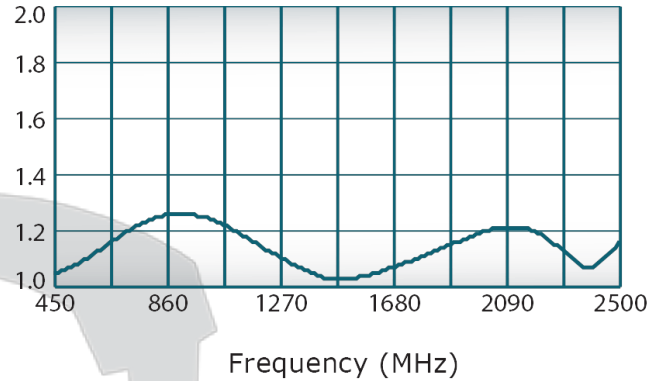
QH7862

Performance Data (Specifications subject to change without notice):

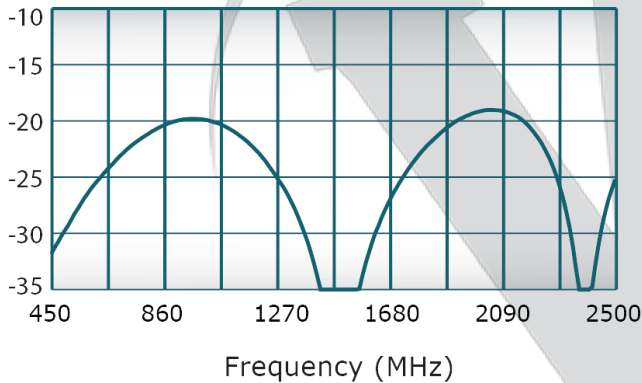
Coupling:



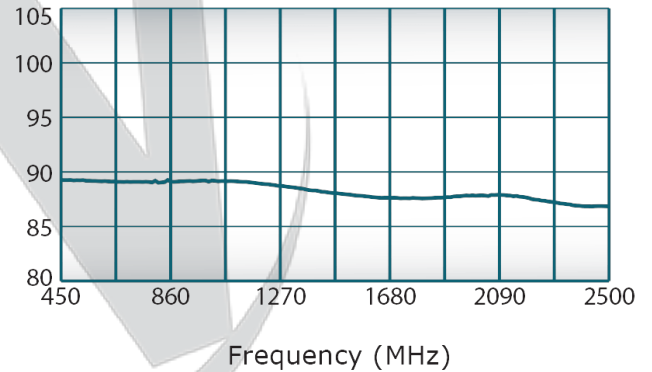
VSWR:

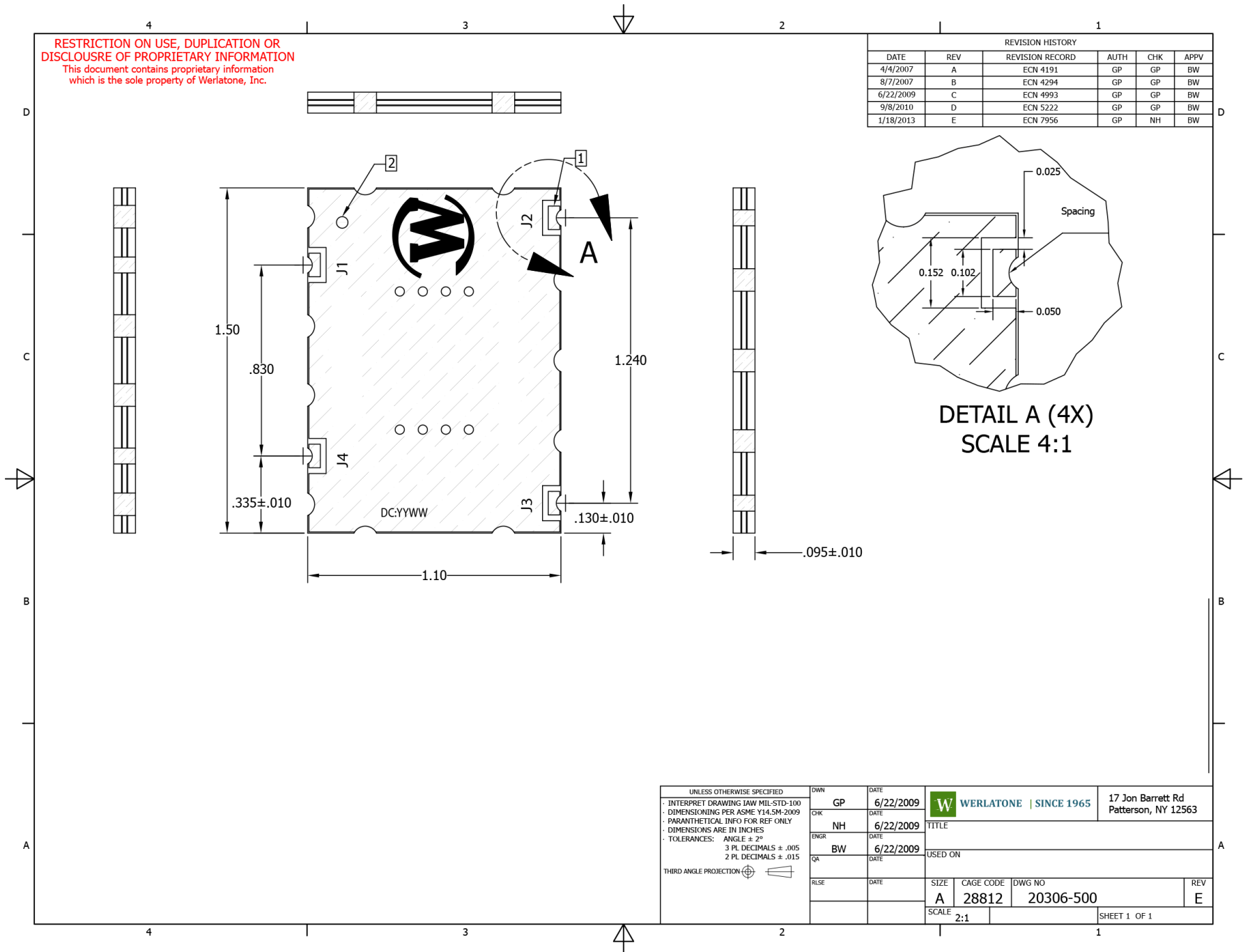


Isolation:



Phase Balance:





Restriction on use, duplication, or disclosure of proprietary information. This document contains proprietary information which is the sole property of Werlatone, Inc.
Werlatone, Inc. 17 Jon Barrett Road Patterson, NY 12563 T:(845)278-2220 F:(845)278-3440 sales@werlatone.com www.werlatone.com