



PRODUCT DATA SHEET

H3715

Werlatone® High Power 180° RF Hybrid Combiners/Dividers balance traditional technologies with disruptive microwave techniques. The outcome is a microwave component which provides an order of magnitude improvement over current capabilities. Our newest line of high power, patented 180° RF Hybrid Combiners/Dividers provides an incredible 5:1 bandwidth, while exhibiting exceptionally low loss and superior port-to-port isolation.

Features:

High Power Wide Bandwidths Small Size Excellent Amplitude Balance

Electrical Specifications:

Frequency: 200 - 400 MHz
Power: 200 W CW
Insertion Loss: 0.3 dB Max.
VSWR: 1.40:1 Max.
Phase Balance: $180^\circ \pm 5^\circ$ Max.
Amplitude Balance: ± 0.15 dB Max.
Isolation: 20 dB Min.

Mechanical Specifications:

Type: Connectorized
Material: Aluminum 6061-T6
Surface Finish: Chem. Film Per MIL-DTL-5541F Type I Class 3 (Yellow Iridite) RoHS Compliant Available
Operating Temperature: -55°C to +75°C
Storage Temperature: -60°C to +85°C
Weight: 0.75 lbs.
Size: 3.0 x 3.0 x 1.87"

Connector Configurations:

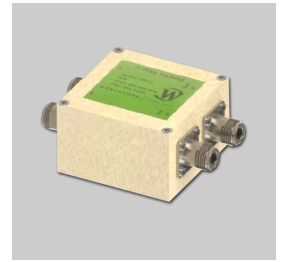
Model	Sum Port (J1)	Inputs (J2,J3)	Diff. Port (J4)
H3715-10	N Female	N Female	N Female
H3715-102	SMA	SMA	SMA

Werlatone's standard line of High Power 180° RF Hybrid Combiners/Dividers covers multiple octaves within a microwave device. Low frequency 180° Hybrid Combiner/Dividers employ proprietary ferrite transmission line techniques, similar to our 0° Combiners/Dividers. Insertion loss in both sum and difference ports is minimal, allowing the hybrid to handle high power over its frequency range. Custom requirements are welcome.



WERLATONE

Model H3715
180° Hybrids Connectorized

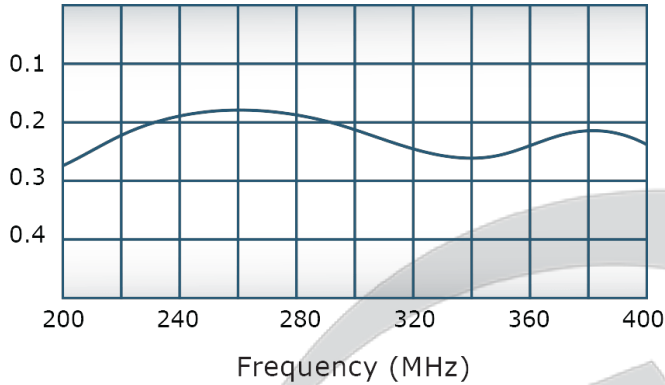


PRODUCT DATA SHEET

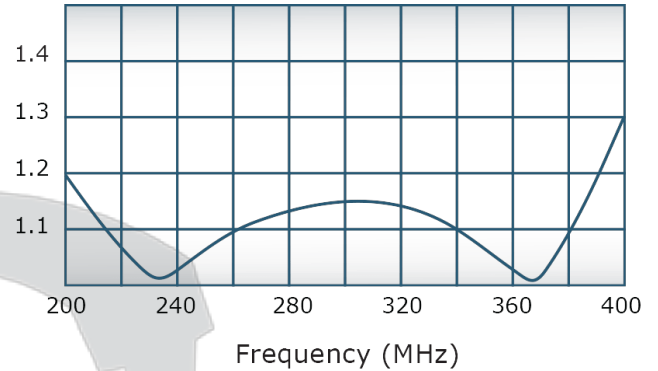
H3715

Performance Data (Specifications subject to change without notice):

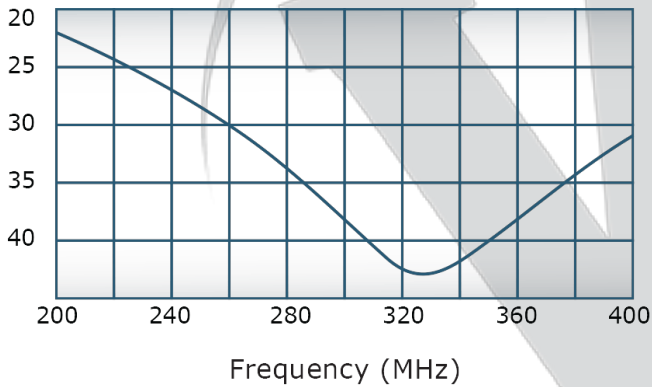
Insertion Loss:



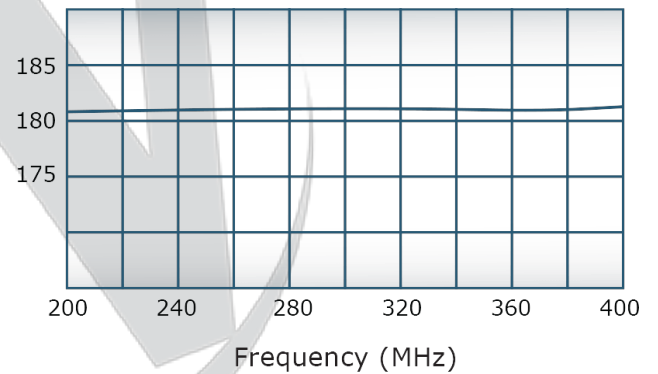
VSWR:



Isolation:

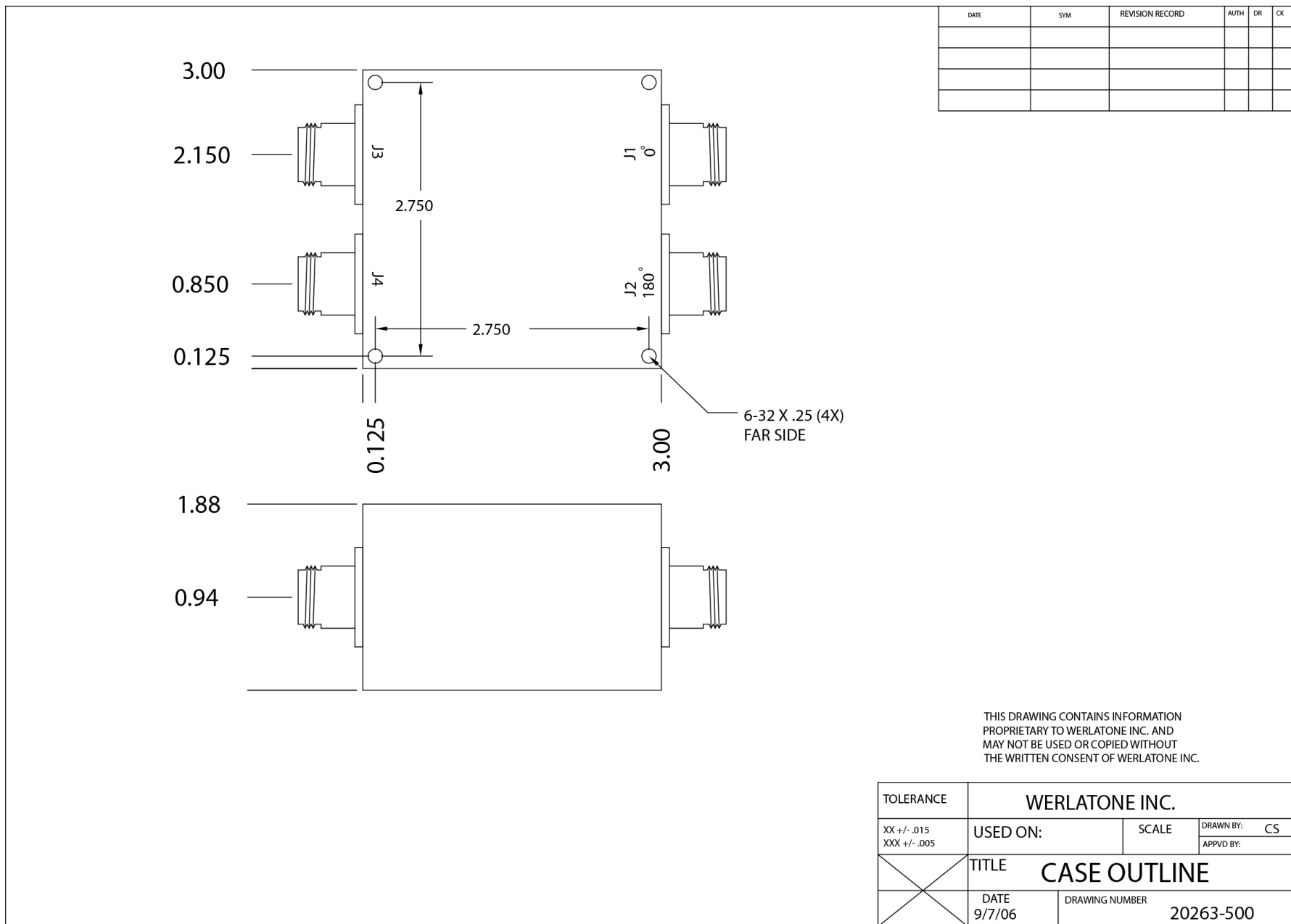


Phase Balance:



Restriction on use, duplication, or disclosure of proprietary information. This document contains proprietary information which is the sole property of Werlatone, Inc.

Werlatone, Inc. 17 Jon Barrett Road Patterson, NY 12563 T:(845)278-2220 F:(845)278-3440 sales@werlatone.com www.werlatone.com



Restriction on use, duplication, or disclosure of proprietary information. This document contains proprietary information which is the sole property of Werlatone, Inc. Werlatone, Inc. 17 Jon Barrett Road Patterson, NY 12563 T:(845)278-2220 F:(845)278-3440 sales@werlatone.com www.werlatone.com