

PRODUCT DATA SHEET

H10125

Werlatone® High Power 180° RF Hybrid Combiners/Dividers balance traditional technologies with disruptive microwave techniques. The outcome is a microwave component which provides an order of magnitude improvement over current capabilities. Our newest line of high power, patented 180° RF Hybrid Combiners/Dividers provides an incredible 5:1 bandwidth, while exhibiting exceptionally low loss and superior port-to-port isolation.

Features:

High Power Wide Bandwidths Small Size Excellent Amplitude Balance

Electrical Specifications:

Frequency: 1000 - 3000 MHz
Power: 350 W CW
Insertion Loss: 0.5 dB Max.
VSWR: 1.35:1 Max.
Phase Balance: $180^\circ \pm 7^\circ$ Max.
Amplitude Balance: ± 0.3 dB Max.
Isolation: 20 dB Min.

Mechanical Specifications:

Type: Connectorized
Material: Aluminum 6061-T6
Surface Finish: Chem. Film Per MIL-DTL-5541F Type II Class 3 (RoHS Compliant)
Operating Temperature: -55°C to +75°C
Storage Temperature: -60°C to +85°C
Size: 2.31 x 1.21 x 0.25"

Port Configurations:

Model	J1	J4	J2 & J3
H10125-Ag	Difference Port	Sum Port	Input Ports

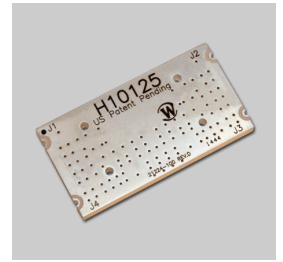
Werlatone's standard line of High Power 180° RF Hybrid Combiners/Dividers covers multiple octaves within a microwave device. Low frequency 180° Hybrid Combiner/Dividers employ proprietary ferrite transmission line techniques, similar to our 0° Combiners/Dividers. Insertion loss in both sum and difference ports is minimal, allowing the hybrid to handle high power over its frequency range. Custom requirements are welcome.



WERLATONE

Model H10125

180° Hybrids Surface Mount (SMT) & Drop-In

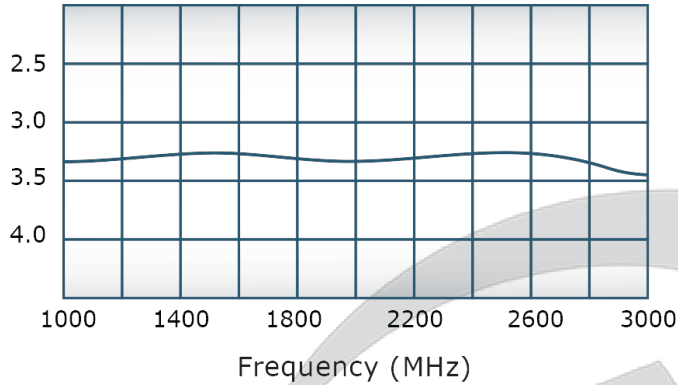


PRODUCT DATA SHEET

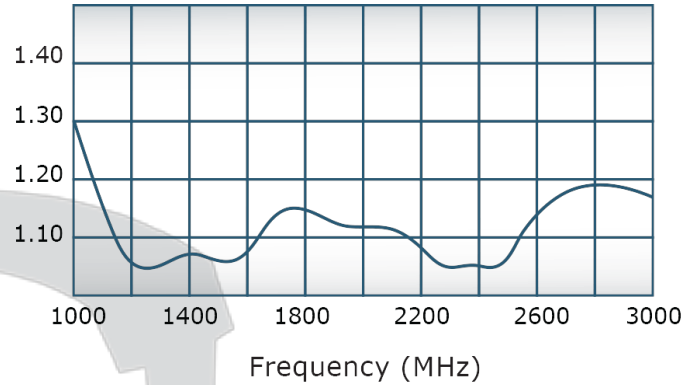
H10125

Performance Data (Specifications subject to change without notice):

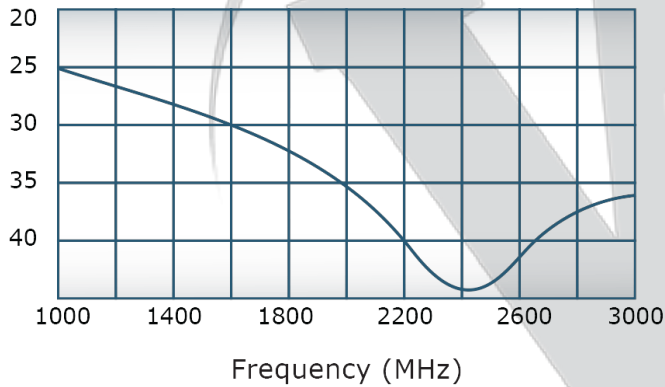
Coupling:



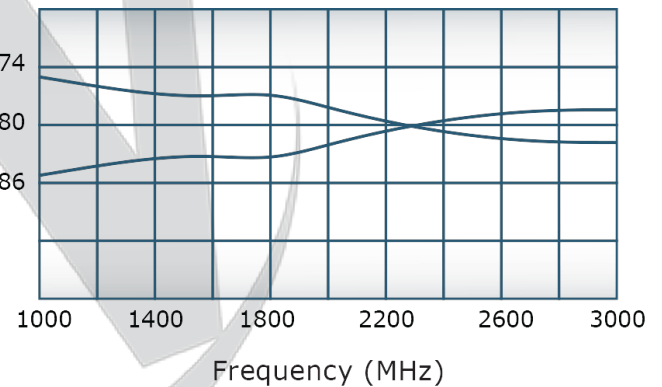
VSWR:



Isolation:



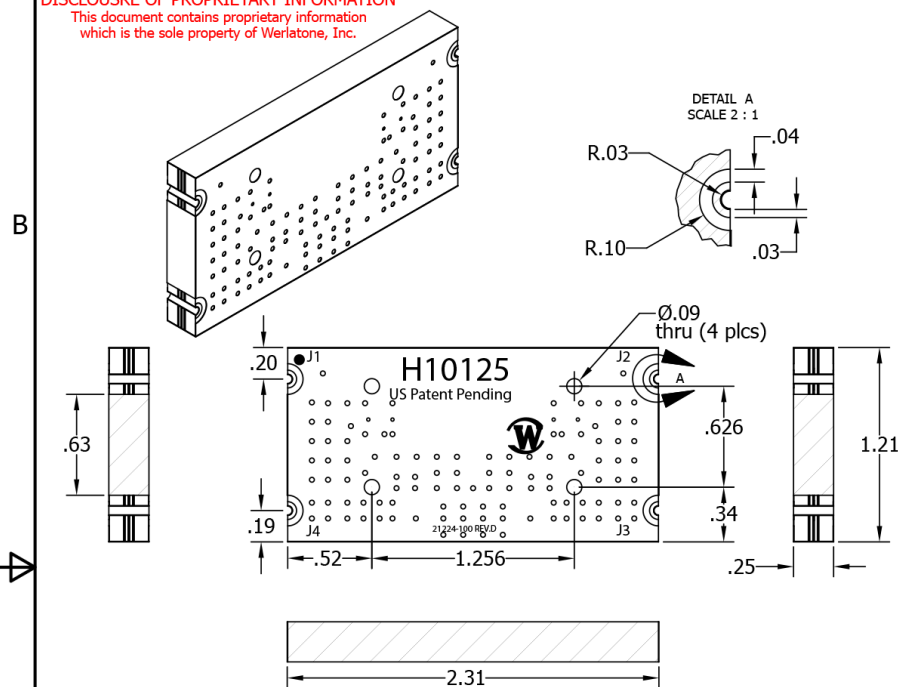
Phase Balance:



Restriction on use, duplication, or disclosure of proprietary information. This document contains proprietary information which is the sole property of Werlatone, Inc.

Werlatone, Inc. 17 Jon Barrett Road Patterson, NY 12563 T:(845)278-2220 F:(845)278-3440 sales@werlatone.com www.werlatone.com

RESTRICTION ON USE, DUPLICATION OR DISCLOSURE OF PROPRIETARY INFORMATION
This document contains proprietary information which is the sole property of Werlatone, Inc.



REVISION HISTORY			
REV	REVISION RECORD	DATE	APPROVED
-	Initial Rls	8/21/2014	BW
A	ECN # 9030	2/9/2016	BW

ELECTRICAL SPECIFICATIONS

(180 deg Hybrid Combiner /Divider)


Frequency: 1000 - 3000 MHz
Power: 350 Watts CW
Insertion Loss: 0.50 dB Max.; 0.4 dB typ.
Amplitude Balance: ± 0.2 dB Max.
Phase Balance: $\pm 7^\circ$ Max.
VSWR: 1.35:1
Isolation: 20 dB Min.
Operating Temperature: -55°C To +85°C

21224-100	H10125
NEXT ASSY	USED ON
APPLICATION	

- UNLESS OTHERWISE SPECIFIED
- INTERPRET DRAWING IAW MIL-STD-100
 - DIMENSIONING PER ASME Y14.5M-2009
 - PARENTHEetical INFO FOR REF ONLY
 - DIMENSIONS ARE IN INCHES
 - DIMENSIONAL LIMITS APPLY BEFORE PROCESSES
 - TOLERANCES: ANGLES $\pm 2^\circ$
3 PL $\pm .005$
2 PL $\pm .015$

THIRD ANGLE PROJECTION

DWN	DATE
NH	08/21/14
CHK	DATE
BW	08/21/14
ENGR	DATE
NH	08/21/14
MFGR	DATE
QA	DATE
RLSE	DATE

 WERLATONE SINCE 1965		17 Jon Barrett Rd Patterson, NY 12563	
TITLE			
Outline			
SIZE	CAGE CODE	DWG NO	REV
A	28812	21224-500	A
SCALE	1:1		SHEET 1 OF 1

Restriction on use, duplication, or disclosure of proprietary information. This document contains proprietary information which is the sole property of Werlatone, Inc.
Werlatone, Inc. 17 Jon Barrett Road Patterson, NY 12563 T:(845)278-2220 F:(845)278-3440 sales@werlatone.com www.werlatone.com