

## PRODUCT DATA SHEET

H8837W

**Werlatone®** High Power 180° RF Hybrid Combiners/Dividers balance traditional technologies with disruptive microwave techniques. The outcome is a microwave component which provides an order of magnitude improvement over current capabilities. Our newest line of high power, patented 180° RF Hybrid Combiners/Dividers provides an incredible 5:1 bandwidth, while exhibiting exceptionally low loss and superior port-to-port isolation.

### Features:

High Power      Wide Bandwidths      Small Size      Excellent Amplitude Balance

### Electrical Specifications:

Frequency: 20 - 512 MHz  
Power: 100 W CW  
Insertion Loss: 0.6 dB Max.  
VSWR: 1.40:1 Max.  
Phase Balance:  $180^\circ \pm 5^\circ$  Max.  
Amplitude Balance:  $\pm 0.4$  dB Max.  
Isolation: 20 dB Min.

### Mechanical Specifications:

Type: Connectorized  
Material: Aluminum 6061-T6  
Surface Finish: Chem. Film Per MIL-DTL-5541F Type I Class 3 (Yellow Iridite) RoHS Compliant Available  
Operating Temperature: -55°C to +75°C  
Storage Temperature: -60°C to +85°C  
Weight: 0.75 lbs.  
Size: 4.7 x 2.3 x 0.8"  
Watertight Model: O-Ring Sealed Case and Connectors

### Connector Configurations:

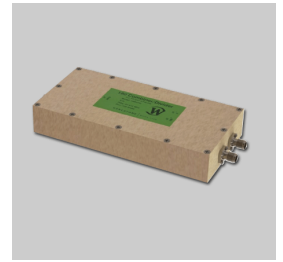
Model	Sum Port (J4)	Inputs (J2,J3)
H8837W-102	SMA	SMA

**Werlatone's** standard line of High Power 180° RF Hybrid Combiners/Dividers covers multiple octaves within a microwave device. Low frequency 180° Hybrid Combiner/Dividers employ proprietary ferrite transmission line techniques, similar to our 0° Combiners/Dividers. Insertion loss in both sum and difference ports is minimal, allowing the hybrid to handle high power over its frequency range. Custom requirements are welcome.



# WERLATONE

Model H8837W  
180° Hybrids Connectorized

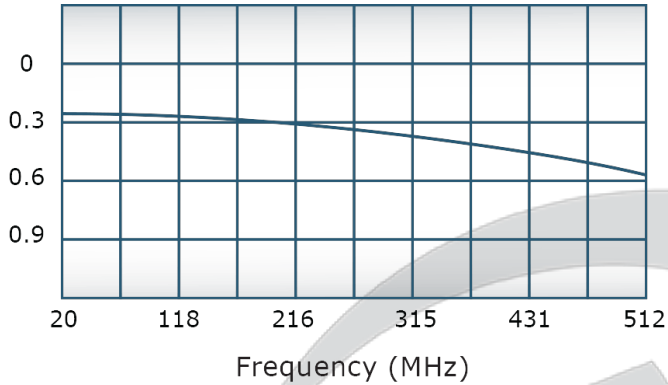


## PRODUCT DATA SHEET

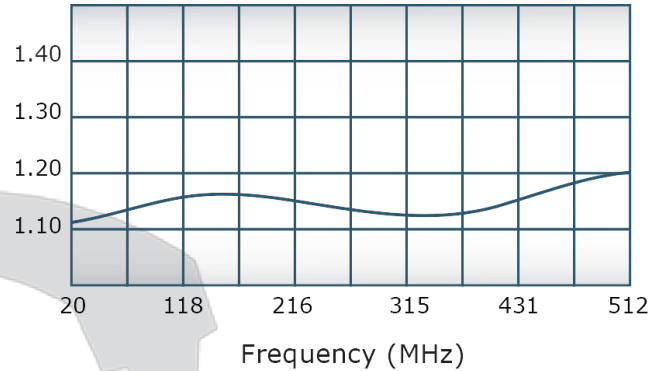
H8837W

### Performance Data (Specifications subject to change without notice):

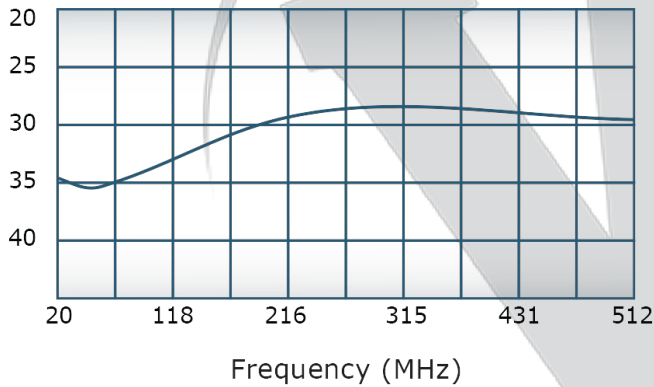
Insertion Loss:



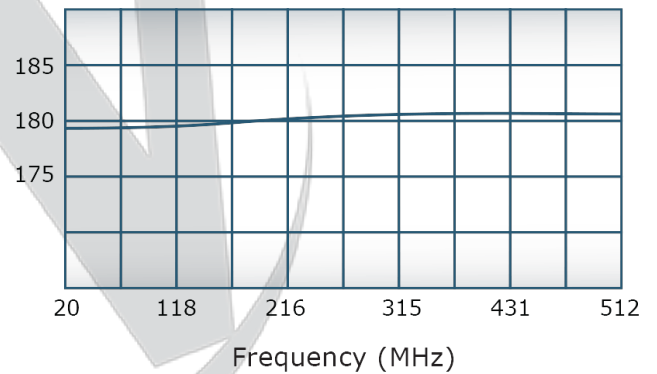
VSWR:



Isolation:

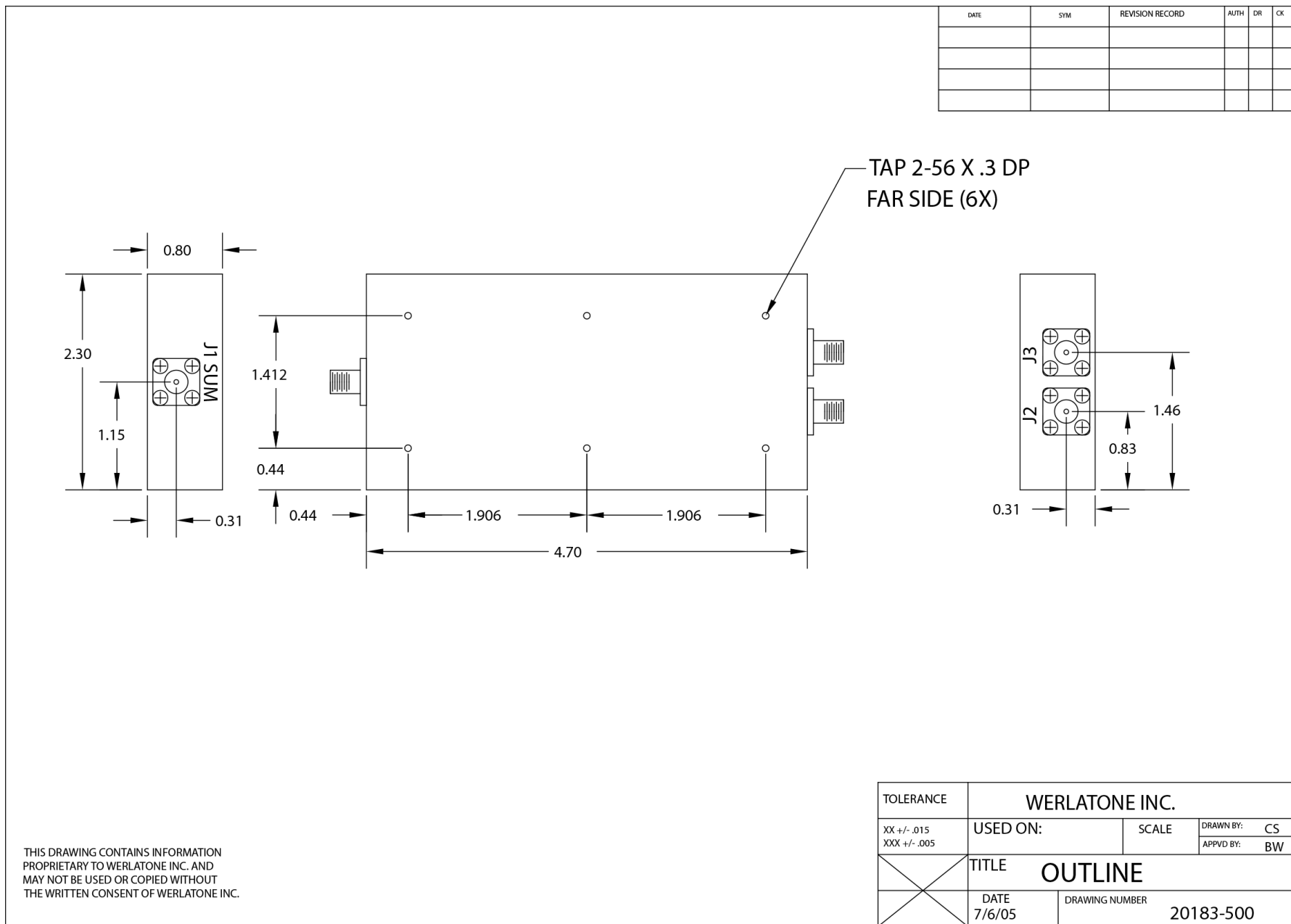


Phase Balance:



Restriction on use, duplication, or disclosure of proprietary information. This document contains proprietary information which is the sole property of Werlatone, Inc.

Werlatone, Inc. 17 Jon Barrett Road Patterson, NY 12563 T:(845)278-2220 F:(845)278-3440 sales@werlatone.com www.werlatone.com



Restriction on use, duplication, or disclosure of proprietary information. This document contains proprietary information which is the sole property of Werlatone, Inc.  
Werlatone, Inc. 17 Jon Barrett Road Patterson, NY 12563 T:(845)278-2220 F:(845)278-3440 sales@werlatone.com www.werlatone.com