



## PRODUCT DATA SHEET

H1484

**Werlatone®** High Power 180° RF Hybrid Combiners/Dividers balance traditional technologies with disruptive microwave techniques. The outcome is a microwave component which provides an order of magnitude improvement over current capabilities. Our newest line of high power, patented 180° RF Hybrid Combiners/Dividers provides an incredible 5:1 bandwidth, while exhibiting exceptionally low loss and superior port-to-port isolation.

### Features:

High Power      Wide Bandwidths      Small Size      Excellent Amplitude Balance

### Electrical Specifications:

Frequency: 2 - 32 MHz  
Power: 500 W CW  
Insertion Loss: 0.2 dB Max.  
VSWR: 1.30:1 Max.  
Phase Balance:  $180^\circ \pm 3^\circ$  Max.  
Amplitude Balance:  $\pm 0.1$  dB Max.  
Isolation: 25 dB Min.

### Mechanical Specifications:

Type: Connectorized  
Material: Aluminum 6061-T6  
Surface Finish: Chem. Film Per MIL-DTL-5541F Type I Class 3 (Yellow Iridite) RoHS Compliant Available  
Operating Temperature: -55°C to +75°C  
Storage Temperature: -60°C to +85°C  
Weight: 1.625 lbs.  
Size: 5.0 x 3.0 x 2.25"

### Connector Configurations:

Model	Sum Port (J4)	Diff. Port (J2)	Inputs (J3, J4)
H2979-10	N Female	N Female	N Female
H2979-12	N Female	SMA	SMA
H2979-13	N Female	BNC	BNC
H2979-102	SMA	SMA	SMA

**Werlatone's** standard line of High Power 180° RF Hybrid Combiners/Dividers covers multiple octaves within a microwave device. Low frequency 180° Hybrid Combiner/Dividers employ proprietary ferrite transmission line techniques, similar to our 0° Combiners/Dividers. Insertion loss in both sum and difference ports is minimal, allowing the hybrid to handle high power over its frequency range. Custom requirements are welcome.



# WERLATONE

Model H1484  
180° Hybrids Connectorized

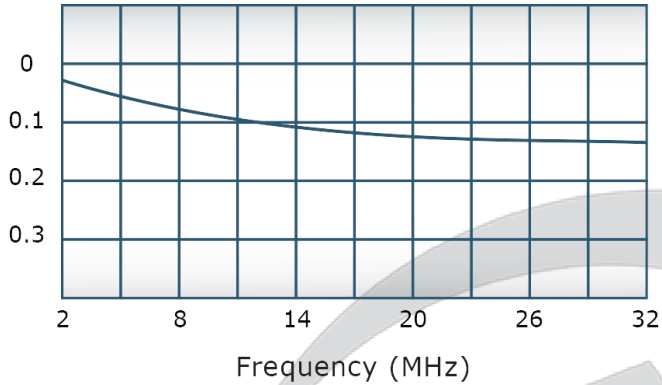


## PRODUCT DATA SHEET

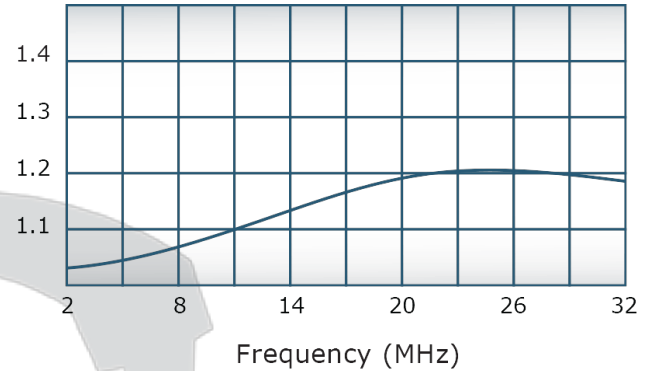
H1484

### Performance Data (Specifications subject to change without notice):

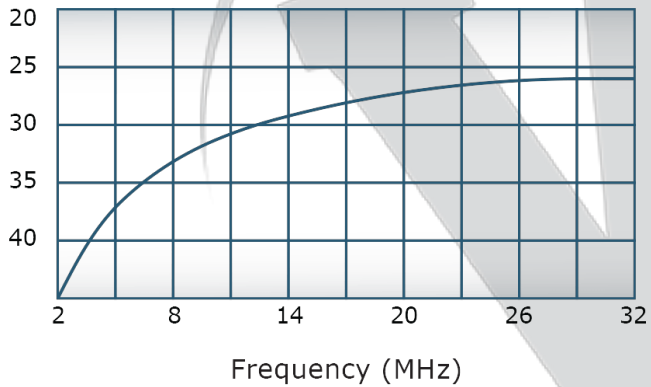
Insertion Loss:



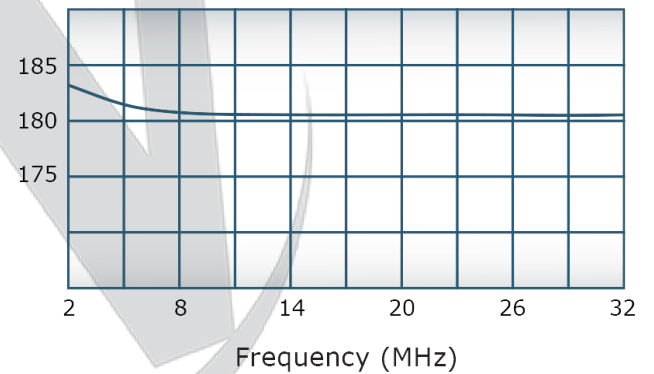
VSWR:



Isolation:



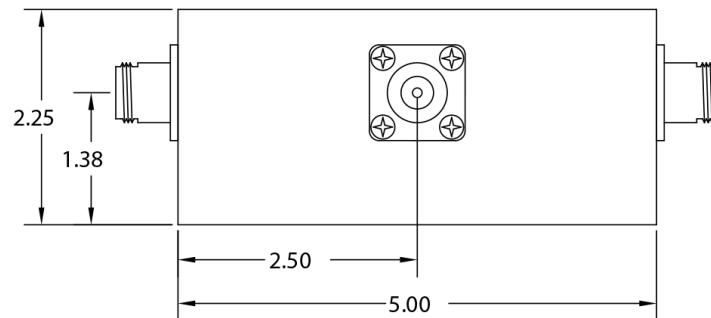
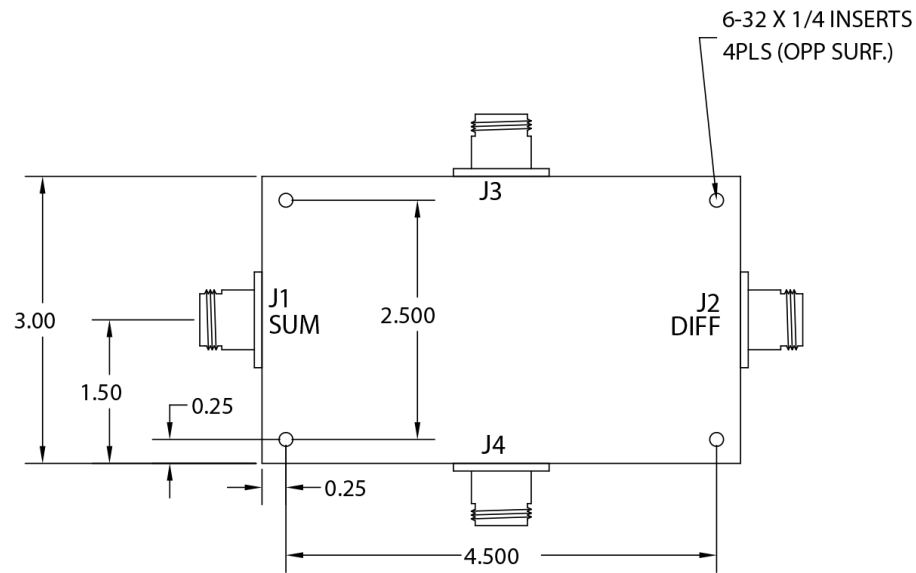
Phase Balance:



**Restriction on use, duplication, or disclosure of proprietary information.** This document contains proprietary information which is the sole property of Werlatone, Inc.

Werlatone, Inc. 17 Jon Barrett Road Patterson, NY 12563 T:(845)278-2220 F:(845)278-3440 sales@werlatone.com www.werlatone.com

DATE	SYM	REVISION RECORD	AUTH	DR	CK
7/92	-	INITIAL	DK		
7/92	REV.A	ECN:1185	DK		
6/14	REV.B	ECN8668	CS	PP	CS



THIS DRAWING CONTAINS INFORMATION  
PROPRIETARY TO WERLATONE INC. AND  
MAY NOT BE USED OR COPIED WITHOUT  
THE WRITTEN CONSENT OF WERLATONE INC.

TOLERANCE	WERLATONE INC.			
XX +/- .015 XXX +/- .005	USED ON:	SCALE	DRAWN BY: RH	APPRD BY:
	TITLE OUTLINE			
	DATE 12/22/03	DRAWING NUMBER 10009-500		

**Restriction on use, duplication, or disclosure of proprietary information.** This document contains proprietary information which is the sole property of Werlatone, Inc.  
Werlatone, Inc. 17 Jon Barrett Road Patterson, NY 12563 T:(845)278-2220 F:(845)278-3440 sales@werlatone.com www.werlatone.com