


PRODUCT DATA SHEET
C2531

4-Port Dual Directional Coupler employs two, 3-Port Uni-Directional Couplers, internally connected, in tandem, providing measurement of both forward and reverse power. Ideal for simultaneously monitoring a system's forward and reverse power and for reflectometer measurements. Unlike the Bi-Directional Coupler, the directivity of the Dual Directional Coupler is unaffected by the loads on the coupled ports.

Features:

High Power Wide Bandwidths Small Size Flat Coupling Custom Designs Available

Electrical Specifications:

Frequency: 1.5 - 100 MHz
Power: 750 W CW
Coupling: 30 ± 1.0 dB Max.
Flatness: ± 0.2 dB Max.
Insertion Loss: 0.2 dB Max.
VSWR (ML): 1.15:1 Max.
Directivity: 25 dB Min.

Mechanical Specifications:

Type: Connectorized
Material: Aluminum 6061-T6
Surface Finish: Chem. Film Per MIL-DTL-5541F
Type I Class 3 (Yellow Iridite)
RoHS Compliant Available
Operating Temperature: -55°C to +75°C
Storage Temperature: -60°C to +85°C
Humidity: 95% Non-Condensing
Size: 4.0 x 2.0 x 1.88"

Connector Configurations:

Model	Input (J1)	Output (J2)	Fwd (J3)	Rev (J4)
C2531-10	N Female	N Female	N Female	N Female
C2531-12	N Female	N Female	SMA	SMA
C2531-13	N Female	N Female	BNC	BNC
C2531-102	SMA	SMA	SMA	SMA

Designed to operate, at 250 W CW, into an infinite VSWR. Designed to operate into a 3:1 Load VSWR, at a rated power of 750 W CW.

Werlatone® Broadband Dual, Uni, and Bi Directional RF Couplers are designed to tolerate the most stringent operating conditions associated with military and EMC testing environments. Many of our RF Directional Couplers, designated Mismatch Tolerant®, will operate continuously, at rated power, into a severe load mismatch condition. Our multi-octave Directional Couplers maintain exceptional coupling flatness, directivity, VSWR, and insertion loss.

Restriction on use, duplication, or disclosure of proprietary information. This document contains proprietary information which is the sole property of Werlatone, Inc.

Werlatone, Inc. 17 Jon Barrett Road Patterson, NY 12563 T:(845)278-2220 F:(845)278-3440 sales@werlatone.com www.werlatone.com



WERLATONE

Model C2531

Connectorized Directional Couplers

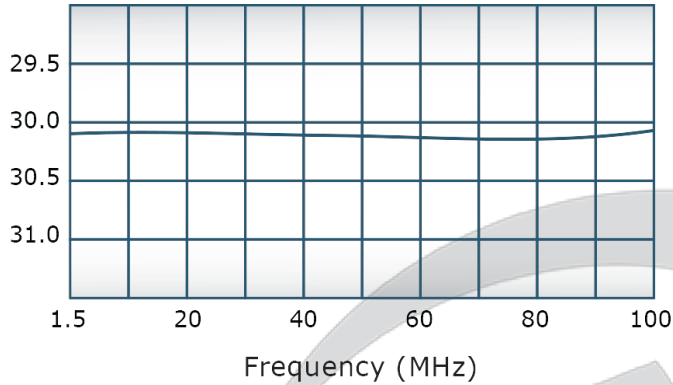


PRODUCT DATA SHEET

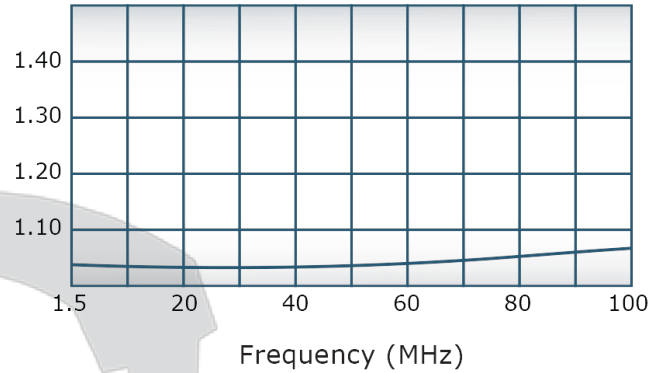
C2531

Performance Data (Specifications subject to change without notice):

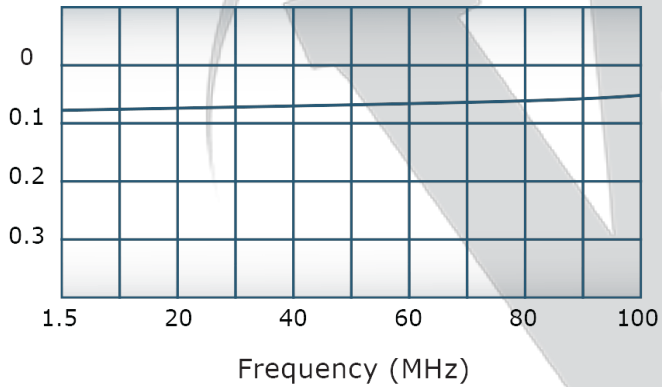
Coupling:



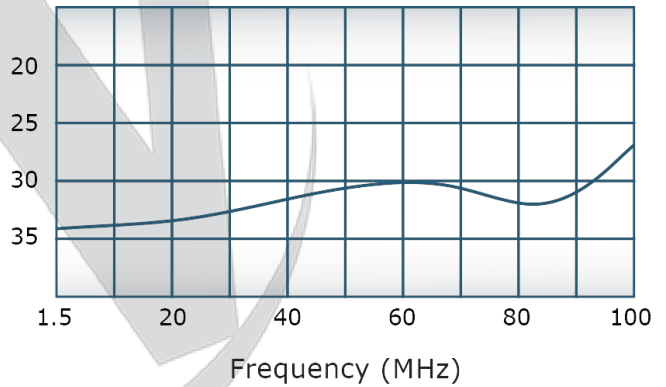
VSWR:



Insertion Loss:

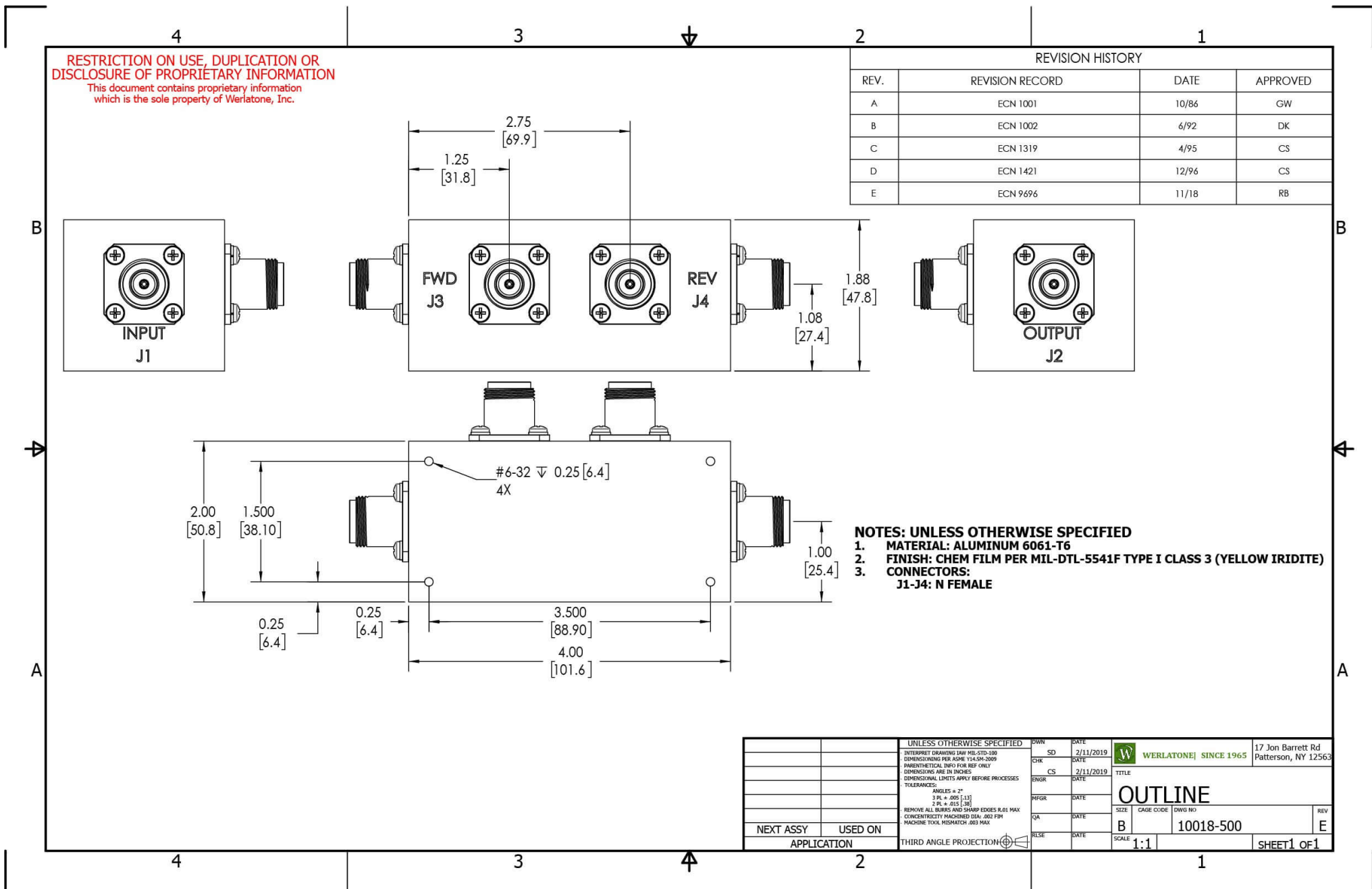


Directivity:




Restriction on use, duplication, or disclosure of proprietary information. This document contains proprietary information which is the sole property of Werlatone, Inc.

Werlatone, Inc. 17 Jon Barrett Road Patterson, NY 12563 T:(845)278-2220 F:(845)278-3440 sales@werlatone.com www.werlatone.com



REVISION HISTORY			
REV.	REVISION RECORD	DATE	APPROVED
A	ECN 1001	10/86	GW
B	ECN 1002	6/92	DK
C	ECN 1319	4/95	CS
D	ECN 1421	12/96	CS
E	ECN 9696	11/18	RB

		UNLESS OTHERWISE SPECIFIED		DWN	DATE	 WERLATONE SINCE 1965	17 Jon Barrett Rd Patterson, NY 12563			
		INTERPRET DRAWING IN ACCORDANCE WITH MIL-STD-100		SD	2/11/2019					
		DIMENSIONS FOR ASSEMBLY		CHK	DATE					
		PARENTHESES FOR REF ONLY		CS	2/11/2019		TITLE			
		DIMENSIONS ARE IN INCHES		ENGR	DATE		OUTLINE			
		DIMENSIONAL LIMITS APPLY BEFORE PROCESSES		INFR	DATE					
		TOLERANCES:		QA	DATE	SIZE		CAGE CODE	DWG NO	REV
		ANGLES ± 2° 3 PL ± .005 [13] 2 PL ± .015 [38] REMOVE ALL BURRS AND SHARP EDGES R.01 MAX CONCENTRICITY MACHINED DIA. .002 FIM MACHINE TOOL MISMATCH .003 MAX		RLSE	DATE	B			10018-500	E
NEXT ASSY		USED ON				SCALE	1:1		SHEET 1 OF 1	
APPLICATION		THIRD ANGLE PROJECTION								

Restriction on use, duplication, or disclosure of proprietary information. This document contains proprietary information which is the sole property of Werlatone, Inc.
 Werlatone, Inc. 17 Jon Barrett Road Patterson, NY 12563 T:(845)278-2220 F:(845)278-3440 sales@werlatone.com www.werlatone.com